

CRAFTED,  
THE ARTISAN WAY.

THE *DUO* / *Concept*

Discover more at  
[www.duo-international.com/concept](http://www.duo-international.com/concept)

2017 | DUO INTERNATIONAL

NIPPON QUALITY

**DUO**  
International

**2017** CATALOGUE  
DUO CUSTOM BAITS

NIPPON QUALITY  
**DUO**  
International

[martin@duo-inc.co.jp](mailto:martin@duo-inc.co.jp)

[www.duo-international.com](http://www.duo-international.com)

[www.facebook.com/DUOJPN](https://www.facebook.com/DUOJPN)

[www.instagram.com/DUOJPN](https://www.instagram.com/DUOJPN)

©2017 DUO CO.,LTD.  
All Rights Reserved.

1783-1 Ojima, Yaizu, Shizuoka, 425-0066, JAPAN tel +81 54 623 7700 fax +81 54 623 7701

# REALIS FANGBAIT SR/DR EDITIONS

## FANGBAIT120SR/140SR

[120SR] ■Length/120mm(4-3/4" in) ■Weight/25.8g(7/8oz) ■Type/Floating(Fixed Weight)  
 ■Hook/#1X ■Ring/Hook Eye#5.5 ■Range/0.8~1.0m(2~3ft) ■Price/215/19€

[140SR] ■Length/140mm(5-1/2" in) ■Weight/38g(1-3/8oz) ■Type/Floating(Fixed Weight)  
 ■Hook/#1/0X ■Ring/Hook Eye#5.5 ■Range/0.8~1.0m(2~3ft) ■Price/235/21€

SR Edition: The typical minnow shape of SR series combines moderate roll with not too strong wobble for universal appeal and use in any situation.

## FANGBAIT120DR/140DR

[120DR] ■Length/120mm(4-3/4" in) ■Weight/26.7g(1oz) ■Type/Floating(Magnet Assisted Weight)  
 ■Hook/#1X ■Ring/Hook Eye#5.5 ■Range/2~2.8m(6~9ft) ■Price/215/19€

[140DR] ■Length/140mm(5-1/2" in) ■Weight/41.2g(1-1/2oz) ■Type/Floating(Magnet Assisted Weight)  
 ■Hook/#1/0X ■Ring/Hook Eye#5.5 ■Range/2.7~3.4m(9~12ft) ■Price/235/21€

DR Edition: In contrast to the countless long lipped diver shaped lures on the market, Fangbait DR series is equipped with outstanding castability.



### Thickened Walls

The walls of Fangbaits are thicker by 20% compared to standard to withstand even the largest and most aggressive of fish.



### Through Wire

Enhancing the strength of the lures further is a thick wire running through the whole body.

## The heavy duty weapon for "Going Beast Mode"

What do you tie on your rod when you plan to target a 20kg Papuan bass, 40kg barramundi or 100kg arapaima? What tackle generates enough confidence to tie it on even when fighting a world class record fish? We offer you the answer - the Fangbait series.

Developed by Kazuhiro Uyama and tested on his many trips to chase the greatest of world's predators, Fangbait aims to become a staple in "beast hunters" tackle boxes.

As a pioneering model for Fang Ops brand, it represents the concept of building some of the toughest lures in the world to the fullest.

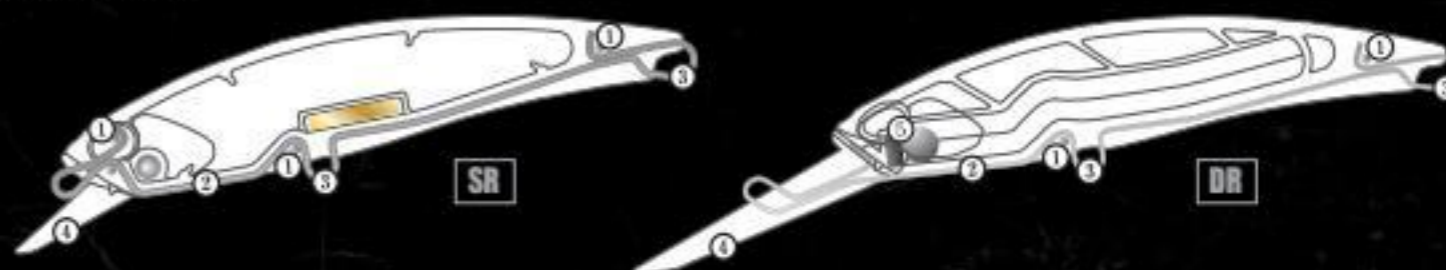


## FANGBAIT SERIES

NEW COLOR RELEASE • SR: MAY 2017, DR: MARCH 2017



## Inner Structure



- Stainless-steel Pins**  
 We have inserted 3 different sized stainless-steel pins to secure the wire which runs through the body.
- Out & Through Wire**  
 Running the wire through the outer side of the body reduces the plastic used, hence enhancing buoyancy.
- Hook Eyes**  
 Outsized hook eyes are able to accommodate heavy duty gear to tackle the largest of the beasts.
- Lip Construction**  
 Reinforced lip construction with extra thickness further aids the strength of the lure.
- Magnet Weight**  
 The moving weight design of DR model gives it enhanced castability, one of the weak point in deep divers.

**FANG·OPS**  
 GOING BEAST MODE



# REALIS

## FANGBAIT SR/DR

LIMITED EDITIONS PIKE/SW **NEW PRODUCT**

### FANGBAIT120SR/140SR PIKE LIMITED **NEW**

PRODUCT RELEASE • MARCH 2017

[120SR] ■ Length / 120mm (4-3/4" in) ■ Weight / 25.8g (7/8oz) ■ Type / Floating (Fixed Weight)  
■ Hook / #1X ■ Ring / Hook Eye #5.5 ■ Range / 0.8~1.0m (2~3ft)

[140SR] ■ Length / 140mm (5-1/2" in) ■ Weight / 38g (1-3/8oz) ■ Type / Floating (Fixed Weight)  
■ Hook / #1/0X ■ Ring / Hook Eye #5.5 ■ Range / 0.8~1.0m (2~3ft)

*Commence "Operation: Esox!" Lock in on pike fangs!*



### FANGBAIT120DR / 140DR SW LIMITED **NEW**

PRODUCT RELEASE • AVAILABLE NOW

[120DR] ■ Length / 120mm (4-3/4" in) ■ Weight / 27.5g (1oz) ■ Type / Floating (Magnet Assisted Weight)  
■ Hook / #1X ■ Ring / Hook Eye #5.5 ■ Range / 2~2.8m (6~9ft)

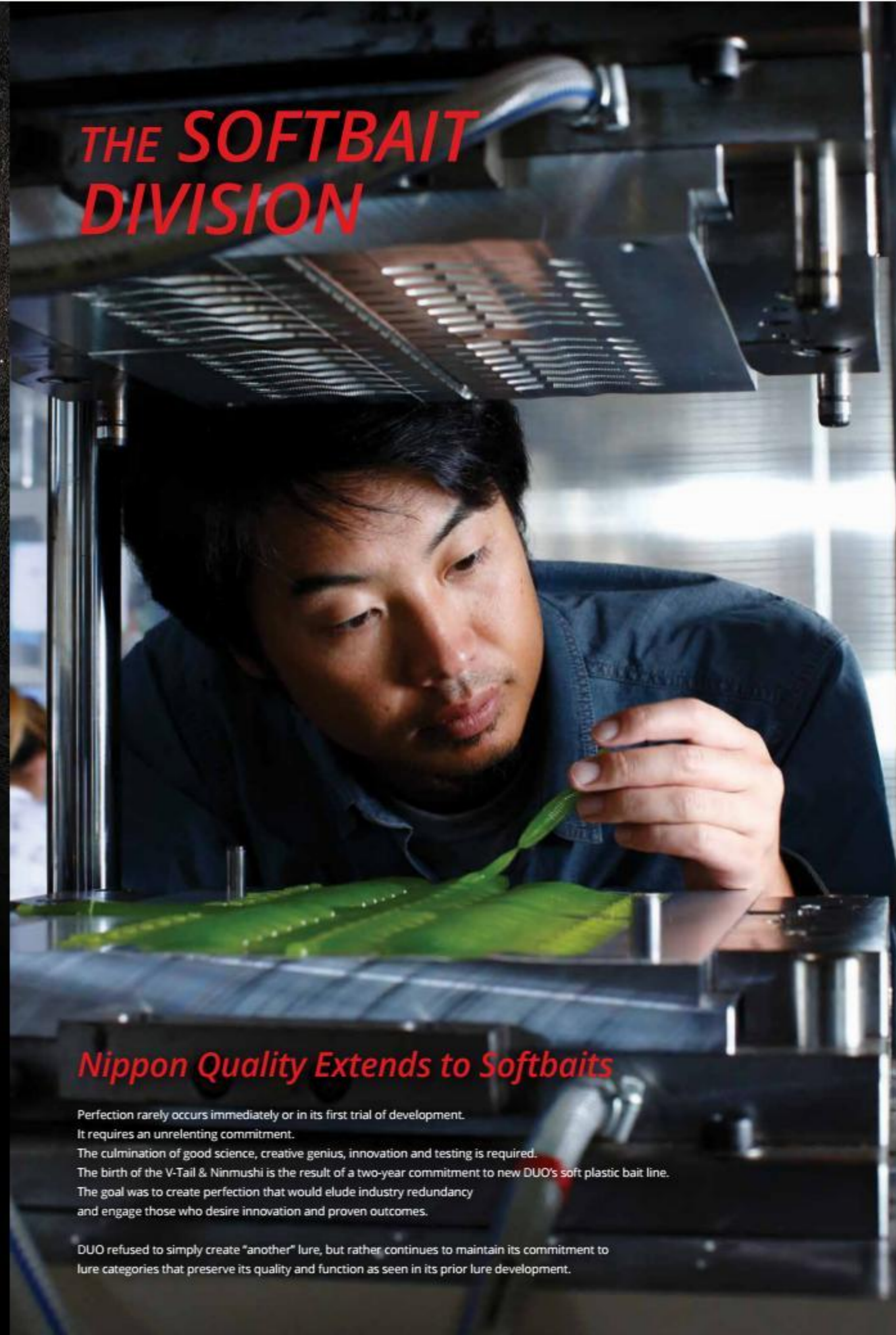
[140DR] ■ Length / 140mm (5-1/2" in) ■ Weight / 42.1g (1-1/2oz) ■ Type / Floating (Magnet Assisted Weight)  
■ Hook / #1/0X ■ Ring / Hook Eye #5.5 ■ Range / 2.7~3.4m (9~12ft)

*Rattle the bluewaters!  
Dive down to those trophy fish.*



Nature Design

# THE SOFTBAIT DIVISION



## Nippon Quality Extends to Softbaits

Perfection rarely occurs immediately or in its first trial of development. It requires an unrelenting commitment.

The culmination of good science, creative genius, innovation and testing is required.

The birth of the V-Tail & Ninmushi is the result of a two-year commitment to new DUO's soft plastic bait line.

The goal was to create perfection that would elude industry redundancy and engage those who desire innovation and proven outcomes.

DUO refused to simply create "another" lure, but rather continues to maintain its commitment to lure categories that preserve its quality and function as seen in its prior lure development.

# REALIS V-TAILSHAD 3" NEW PRODUCT

■ Length / 76.2mm (3" in) ■ Pieces / 8 per pack

## Adaptable shad for multi-rigging and diverse techniques

Our first soft bait in the Realis brand was developed with primary focus on finding the most suited material. Our ultimate goal was "vitality". The R&D team developed the V-tail's ballast system by selecting several types of salts with specific density and leeching ratios. It goes without saying that this soft bait will effectively perform the basic action of surface shaking and the mid-range strolling, but can also enact the subtle natural movement in the tail at the moment it hits the bottom in the deep zone. Carefully created unique, pliable profile with a quiver, dart action will replicate a lively bait in various conditions and eliminate the fish's hesitation to eat the lure.



### Multibait Tail Design

One of secrets of V-Tail versatility is the originally designed tail which creates a baitfish like movement while swimming, imitating various bait in other areas too, f.e. replicating crustacean when at the bottom.



SECTIONAL VIEW

### A Concave Design

The large concave design in the back section will not only control the rising and sliding of the bait during shaking, but also efficiently transfer a realistic pulsation towards the tail section.

## V-TAILSHAD 3" NEW

PRODUCT RELEASE • MARCH 2017



Photo Credit | Nicola Zingarelli

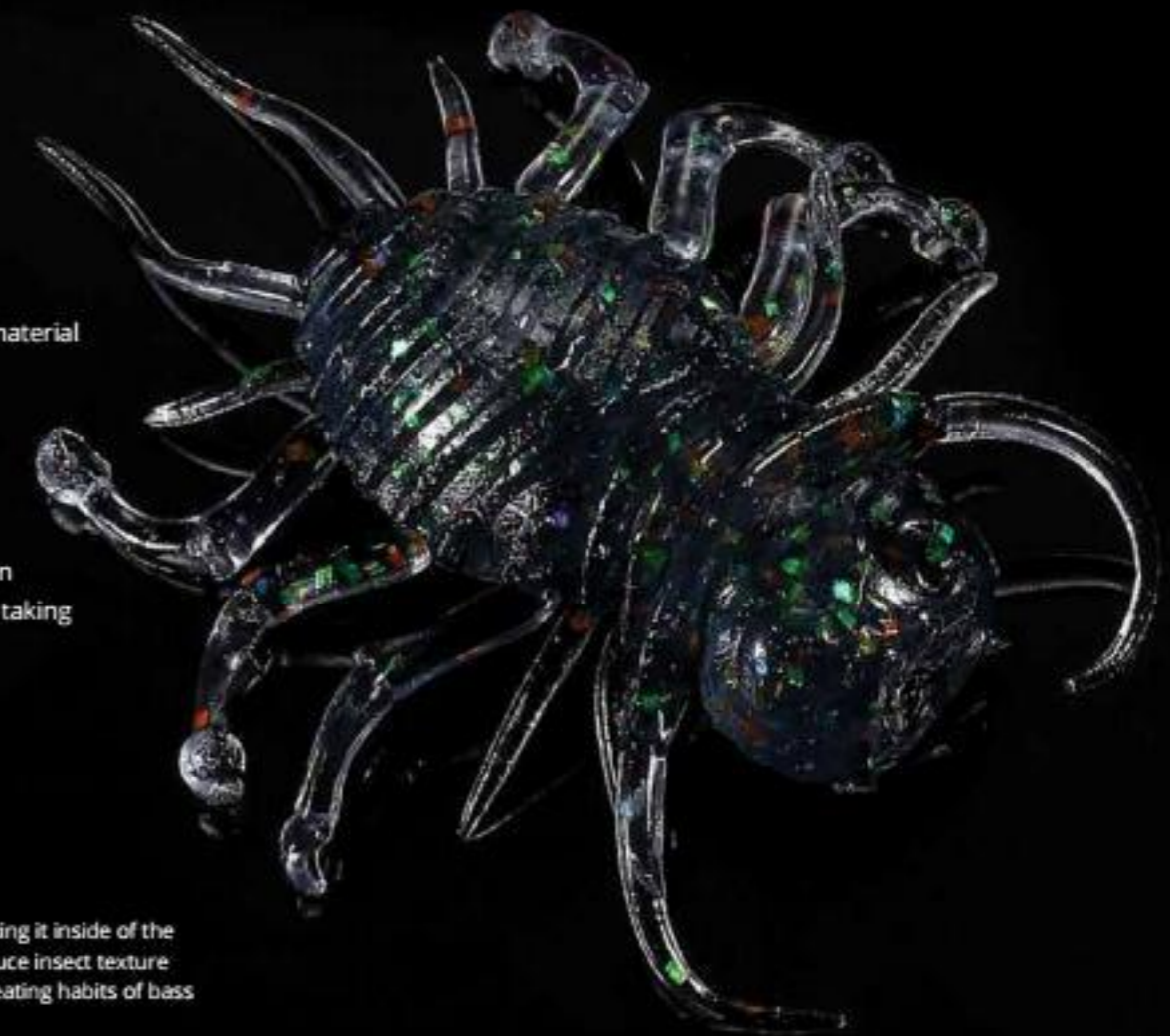
# REALIS NINMUSHI NEW PRODUCT

■ Length / 38mm (1-1/2" in) ■ Pieces / 3 per pack



## As Real As It Gets - an authentic soft plastic bug

The body of Ninmushi is formed of a floating material with the addition of salt, which has enabled anglers achieve great casting distance. The weight and unique body formation also creates an attractive splashing sound of a bug when the lure hits the water, attracting fish from a wide area. We have also mixed in natural fibers in the material giving the body a unique silhouette and flashing affect inducing bites even from those fish reluctant to use their mouth. The complex design of Ninmushi presents itself also in the shape of the legs as every single foot has different specification of shape and direction resulting in each foot taking different action and making different wave.



### Internal Fiber

By blending the fiber and mixing it inside of the body we were able to reproduce insect texture and in effect stimulating the eating habits of bass and other species.

## NINMUSHI NEW

PRODUCT RELEASE • JUNE 2017



# REALIS

## ONIMASU 188F/188S



- [188F] ■ Length/188mm (7.25" in) ■ Weight/75g (2.3/4oz) ■ Type/Slow Rise Floatation (Fixed Weight)  
 ■ Hook/#1/0X ■ Ring/Hook Eye#4 ■ Range/0.2~0.6m (0~2ft)
- [188S] ■ Length/188mm (7.25" in) ■ Weight/78g (2.3/4oz) ■ Type/Sinking (Fixed Weight)  
 ■ Hook/#1/0X ■ Ring/Hook Eye#4 ■ Range/0.4~0.8m (1~3ft)



### ONIMASU 188

NEW COLORS • AVAILABLE NOW



ASA3841 Salmon ND

CCC3827 Gizzard Shad ND

CCC3836 Rainbow Trout ND

CCC3853 Largemouth Bass ND

CCC3864 Yellow Perch ND

QNA3167 Chart Back Ayu NEW

ACC3018 Smokey Bone NEW

ACC4010 Pearl Ayu NEW



### Pioneer of the Prometheus Project - Taking realism to a new level

The Prometheus Project began in 2013. Famed lure designer, Mr. Adachi, desired a unique platform which could accompany his design expertise and intricate understanding of lure actions, fusing them together with his advanced high resolution imaging and painting technology. The finished product is awe inspiring and shockingly realistic.

Welcome to the Prometheus Project: Onimasu. The focus on this lure was to acquire a true S-curve motion distinctly different from saturated actions being depicted in the industry. This lure's vector (course of travel) is influenced by the lure's unique profile and fore-region. Its fluxion (or velocity) is dictated by line tension and reel retrieve. It is versatile and can be guided by an array of gear ratios from a selected reel. The intention is to offer the swim motion through a variety of retrieves.

Most slalom or affectionately called glide baits provide a relatively shallow 'sway and yaw' motion. They show less ability to glide far beyond the centerline of travel. In fact, many take on the resemblance of "tacking" or a fluid "walk the dog" routine.

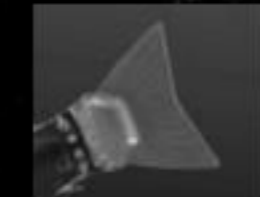
Adachi's Onimasu executes a wide swing and gait to its course of travel. This significant side-to-side "flare" keeps the lure in an evasive pattern yet in the strike window longer, mimicking what DUO calls "escape behavior". Its glide pattern can reach nearly 3 feet. The ballast and ride positions of the lure give incredible stability at high speeds, remaining in the water and avoiding porpoising (a negative tendency).

Onimasu is one of many innovations to rise from the Prometheus Project. It will bring the discriminating angler closer to the real thing and anticipation will be his only challenge.



#### Thin Profile

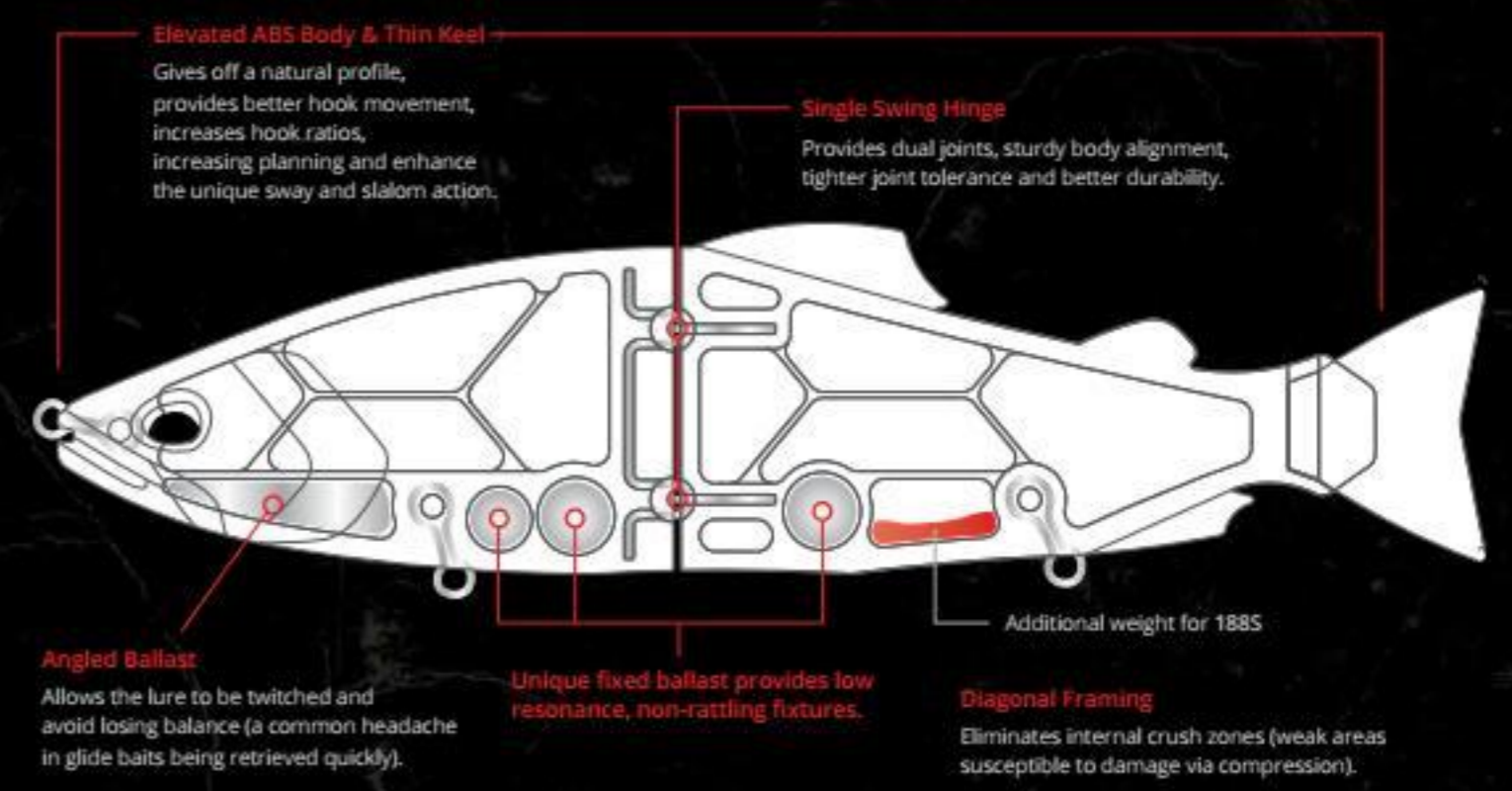
Thin, low mass profile is designed to increase hook ratios and reduce fish-leveraging against the lure.



#### Soft Tail

Onimasu comes equipped with a soft tail made of polymer for ultra realism.

### Inner Structure



#### Elevated ABS Body & Thin Keel

Gives off a natural profile, provides better hook movement, increases hook ratios, increasing planning and enhance the unique sway and slalom action.

#### Single Swing Hinge

Provides dual joints, sturdy body alignment, tighter joint tolerance and better durability.

#### Angled Ballast

Allows the lure to be twitched and avoid losing balance (a common headache in glide baits being retrieved quickly).

#### Unique fixed ballast provides low resonance, non-rattling fixtures.

#### Diagonal Framing

Eliminates internal crush zones (weak areas susceptible to damage via compression).

Additional weight for 188S

# REALIS PENCILPOPPER110/148

[110] ■ Length/110mm(4-3/8" in) ■ Weight/18g(5/8oz) ■ Type/Floating(Fixed Weight)  
■ Hook/#4X ■ Ring/Hook Eye#3

[148] ■ Length/148mm(5-7/8" in) ■ Weight/40g(1-3/8oz) ■ Type/Floating(Moving Weight)  
■ Hook/#1/0X ■ Ring/Hook Eye#4

## Maintain your long distance relationship with trophy fish

DUO's success in the top water category was established via its introduction of the Pencil 110. Its effortless ability to "walk the dog" and exemplified quality, and durability, gave it a place in the market. For 2016 DUO International has introduced two Realis top water lures that together may need their own category. The Pencil Popper 148 and its little brother the Pencil Popper 110. These pencil poppers are another advancement in lure fishing and are swollen with attributes others have yet to experience.

You will notice close up their shape, the bends and curves and tapered points all pertain to engineering keys that unlock their aerodynamics and hydrodynamics functions which will pleasantly surprise you as many discriminating and professional anglers are discovering already. The internal super-structure adjoins over 40 intersecting diagonal beams creating super rigid body core.

No matter what line type or diameter is provided, the aerial track of the PP148 and PP110 is consistent, accurate and will out distance standard top water configurations. The poppers' mouth enters the water line at approximately a 45-degree angle allowing the lure to displace a significant amount of surface-water. The dual-purpose lure not only pops, but it can be walked in less stable surface conditions.

Meet a top water lure with dual-purpose actions.

The swim actions are effortless, the sound resonates well, the profiles are attractive and the color patterns are proven.

We just made top water fishing better.



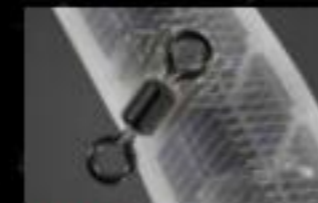
## PENCILPOPPER110/148

NEW COLOR RELEASE • APRIL 2017



## PENCILPOPPER110/148 SW LIMITED

NEW COLOR RELEASE • APRIL 2017



### 360 Hanger

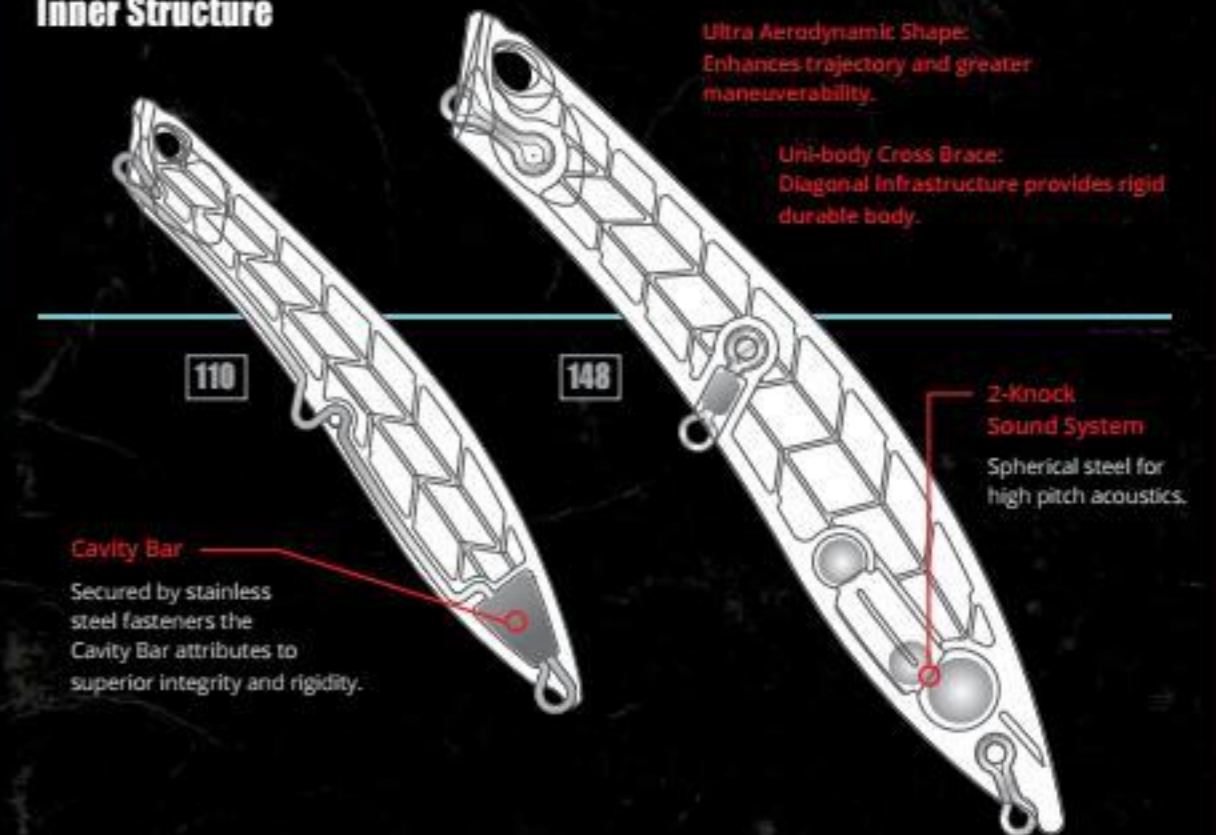
The front hook harness utilizes a 360-degree rotation swivel, which helps reduce negative leveraging of fish against the hook and body.



### Through Wire

By integrating ladder rib structure along with through wire construction, PP110 has enough strength to handle largest of fish.

## Inner Structure



# REALIS CRANK G87 15A / 20A

[15A] ■ Length / 87mm (3-1/3") ■ Weight / 34.0g (1-1/4oz) ■ Type / Floating (Magnet Assisted Weight) ■ Hook / #2X  
 ■ Ring / Line Eye #4 - Hook Eye #4 ■ Range / 4.2~5.2m (14~16ft)~

[20A] ■ Length / 87mm (3-1/3") ■ Weight / 35.5g (1-1/4oz) ■ Type / Floating (Magnet Assisted Weight) ■ Hook / #2X  
 ■ Ring / Line Eye #4 - Hook Eye #4 ■ Range / 5.5~6.3m (19~21ft)~



## Crankbait engineering beyond barriers, beyond frontiers, beyond belief

To set yourself apart from the herd in the crankbait market, a company has to take serious its understanding of hydro-dynamics, materials and components. It must also have excellent balanced, castability, deflection, unique yet proven vibration and low line-tension during retrieves. DUO exceeded these challenges and set a bench mark in the process with Realis Crank G87, a true super crank and a true pinnacle of lure engineering.

G87 20A's crank development was carefully put into motion by DUO's R&D team. The need for a crankbait that could truly dive beyond the 20-foot mark and accurately reach its target has been deeply desired by professional anglers. To make a lure dive deep is not a huge challenge. But to make a lure dive and remain balanced, travel through the air minimally influenced by cross winds and stay within strike zone longer with minimal reeling tension requires precise engineering. G87 has walked right through what most have called the final barrier in crankbaiting and pioneered a new one.



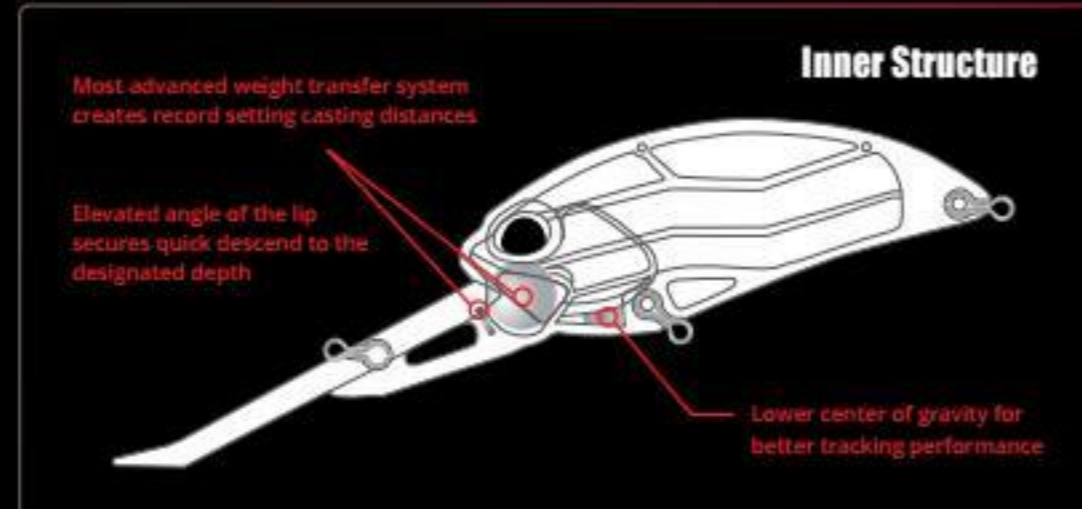
### Unique Lip Design

By eliminating part of plastic from the bottom part of the lip, the weight was reduced resulting in increased buoyancy.



### Weight System

G87's weight is located outside of the body cavity, where it's held by a magnet made of Neodymium.



# G-Fix

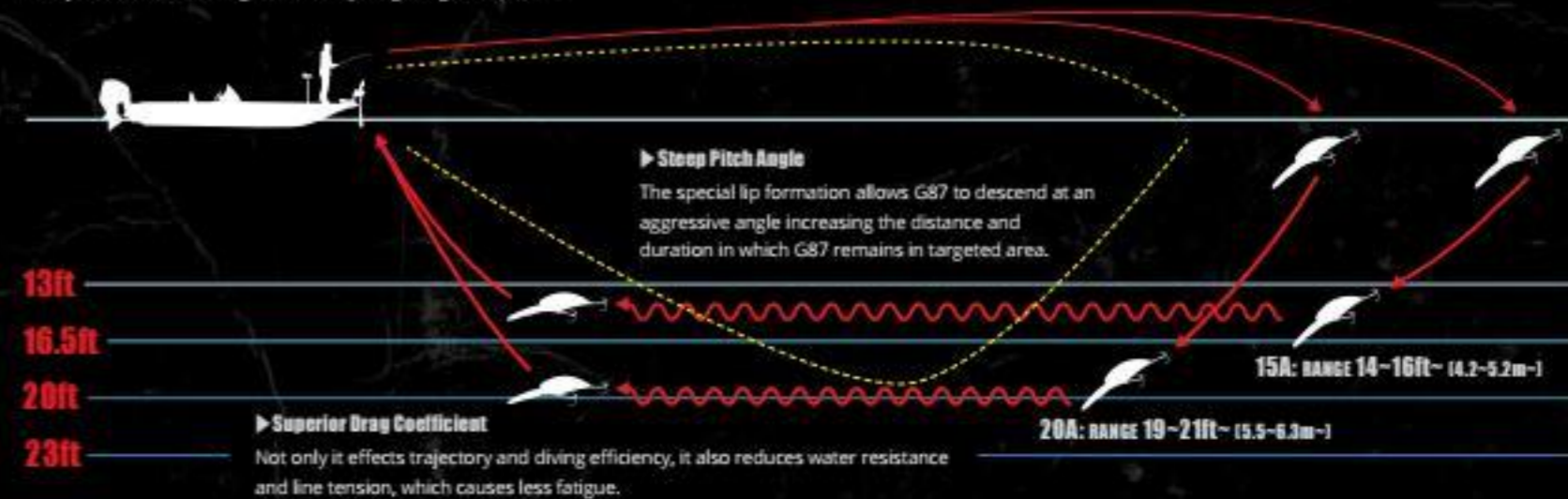
## CRANK G87 15A / 20A

NEW COLOR RELEASE • APRIL 2017



### ► Precision Trajectory

Due to its aerodynamic shape, G87 provides accuracy and better response in windy conditions meaning dramatically longer flight distances.





*The vehicle for the world's fastest growing finesse technique*

The "Spybaiting" technique is considered an ultra-finesse hard bait technique requiring light line, long casts and in-line retrieves. Manipulation of the technique requires concentration and steady slow retrieves. But the results are mind altering. It is a finesse technique that catches big fish as well as numbers. It has recently hit the global shores and has been proven effective on a wide range of fish, both freshwater and saltwater.

The lure designed for this technique is the Realis Spinbait. DUO invites you to become familiar with the deadly finesse presentation known as "Spybaiting", the technique of silent capture.

**REALIS SPINBAIT 80/90/80 G-Fix**

**SPINBAIT 80**

Length/80mm (3-1/8" in) Weight/9.5g (3/8oz) Type/Sinking (Fixed Weight)  
Hook/#5X Ring/Hook Eye#2 Range/2.0~3.5m~(7~12ft~)

NEW COLORS • AVAILABLE NOW



Discover more at [www.spybaiting.com](http://www.spybaiting.com)

**SPINBAIT 90**

Length/90mm (3-1/2" in) Weight/15g (1/2oz) Type/Sinking (Fixed Weight)  
Hook/#6X Ring/Hook Eye#2 Range/2.5~5.0m~(8~17ft~)

NEW COLORS • AVAILABLE NOW



**SPINBAIT 80 G-Fix**

Length/80mm (3-1/8" in) Weight/10.5g (3/8oz) Type/Sinking (Fixed Weight)  
Hook/#5X Ring/Hook Eye#2 Range/3.0~5.5m~(10~18ft~)





# REALIS

## JERKBAIT100SP/100DR/110SP

### The new JDM jerkbait/ripbait standard

How do you know if you have a great jerkbait? What characteristics stand at the forefront? Professional anglers will tell you casting distance, balance, darting and flash are key considerations. Realis Jerkbait is a composition of desired traits and much more.

Realis Jerkbait line-up has the best of all worlds - balanced retrieve, specific body rotation to give off a pronounced wobble and precise gait during lure's tack-movement. The taller, flatter sides of the lure provide a larger profile, giving an impression a bigger baitfish and provide wider band of flashing to improve detection of the lure at a distance. The multiple actions and versatility are capable in the series due to high-end componentry hidden in its durable frame structure. DUO has truly went beyond the angler's desire when it comes to refined jerkbait fishing.



### JERKBAIT100SP

Length/100mm (3-7/8" in) Weight/14.5g (1/2oz) Type/Suspending (Fixed Weight)  
Hook/#5 Ring/Line Eye#2-Hook Eye#2 Range/0.8~1.5m (2~5ft)

NEW COLORS • AVAILABLE NOW



### JERKBAIT110SP

Length/110mm (4-3/8" in) Weight/16.2g (5/8oz) Type/Suspending (Moving Weight)  
Hook/#6X Ring/Line Eye#3-Hook Eye#3 Range/0.8~1.6m (2~5ft)

NEW COLORS • AVAILABLE NOW



### JERKBAIT100DR

Length/100mm (3-7/8" in) Weight/15.6g (1/2oz) Type/Suspending (Magnet Assisted Weight)  
Hook/#4X Ring/Line Eye#3-Hook Eye#2 Range/1.8~3.0m (6~10ft)

NEW COLORS • AVAILABLE NOW



Nature Design Photo Credit | Scott Whitfield

# REALIS JERKBAIT 120SP/120F

## The flagship of Realis jerkbaits

Being known for its versatility to cover water quickly or to be target orientated on the go, has made the Realis Jerkbait 120 a super tool among big bait users. The heavy flash emitted from the 120 is significant in comparison to other jerkbaits of its size is due to extremely tall profile and ability to rotate its body 180 degrees.

Large tungsten ballast rides on a sophisticated track and carriage system noted to seat tungsten bearings firmly, even at extreme angles, ensuring the lures dominate action at anglers initial imparted action without any danger of the bearing breaking loose and killing the action.



### JERKBAIT 120SP

Length / 120mm (4-3/4" in) ■ Weight / 18g (5/8oz) ■ Type / Suspending (Moving Weight)  
 Hook / #5X ■ Ring / Line Eye #3 - Hook Eye #2 ■ Range / 1.0~1.8m (3~6ft)

NEW COLORS • AVAILABLE NOW



### JERKBAIT 120F

Length / 120mm (4-3/4" in) ■ Weight / 17.1g (5/8oz) ■ Type / Floating  
 Hook / #5X ■ Ring / Line Eye #2 - Hook Eye #2 ■ Range / 0.8~1.0m (2~3ft)

NEW COLOR RELEASE • MARCH 2017



# REALIS JERKBAIT 100SP/120SP LIMITED EDITIONS SW/PIKE

NEW PRODUCT

### JERKBAIT 100SP/120SP PIKE LIMITED

NEW COLOR / NEW PRODUCT RELEASE • MARCH 2017

[100SP] ■ Length / 100mm (3-7/8" in) ■ Weight / 14.5g (1/2oz)  
 ■ Type / Suspending (Fixed Weight) ■ Hook / #4X  
 ■ Ring / Line Eye #3 - Hook Eye #3 ■ Range / 0.8~1.5m (2~5ft)

[120SP] ■ Length / 120mm (4-3/4" in) ■ Weight / 17.8g (5/8oz)  
 ■ Type / Suspending (Moving Weight) ■ Hook / #3X  
 ■ Ring / Line Eye #3 - Hook Eye #3 ■ Range / 1.3~1.8m (4~6ft)

### Gearing up for Esox sessions

The new Pike Limited range is aimed at Europe's iconic predator and comes ready for battle - geared up with two heavy duty hooks and clothed in some of the most common pike baitfish patterns, it's ready to cause even more havoc on one of the world's finest water menace.



### JERKBAIT 120SP SW LIMITED

NEW COLOR RELEASE • APRIL 2017

Length / 120mm (4-3/4" in) ■ Weight / 18.2g (5/8oz) ■ Type / Suspending (Moving Weight)  
 Hook / #5X TIN ■ Ring / Line Eye #3 - Hook Eye #3 ■ Range / 1.0~1.8m (3~6ft)

### Saltwater version for unlimited salt life

The iconic jerkbait has now been adjusted for saltwater sessions with some of the most popular colors from Tide Minnow range and some unique patterns added to top it off to further enhance reputation of this cult lure also for shore and off-shore fishing.



# REALIS

## CRANK M62 5A · M65 8A / 11A

HAJIME MURATA  
**MLine**

The M-Line Series is the epitome of all terrain mobility, balance and recovery.

Quality and durability are the basic DUO standards. Impeccable design characteristic are not just there for looks. Multiple internal beams and chambers provide structural integrity beyond standard cranks.

The M-Line's action is unprecedented. It possesses excellent tight vibration and water displacement is significant. The low co-efficiency allows for the lure to move through the water and air balanced and without heavy line tension with low keel ballast provide high obstacle avoidance.

All three crankbaits in M-Lines were loaded with performance but it is the complete package assets offered in this series that is going to give the angler an advantage. You may be able to ascertain why the M-Line was a five year project. There is no crankbait line like it.

REALIS X HAJIME MURATA

### CRANK M62 5A

Length / 62mm (2-1/2" in) Weight / 14.3g (1/2oz) Type / Floating (Magnet Assisted Weight)  
Hook / #5X Ring / Line Eye #2 - Hook Eye #2 Range / 1.2~1.8m (4~6ft)

NEW COLORS · AVAILABLE NOW



### CRANK M65 8A

Length / 65mm (2-1/2" in) Weight / 14g (1/2oz) Type / Floating (Fixed Weight)  
Hook / #4X Ring / Line Eye #3 - Hook Eye #3 Range / 2.0~2.5m (7~9ft)

NEW COLORS · AVAILABLE NOW



### CRANK M65 11A

Length / 65mm (2-1/2" in) Weight / 16g (5/8oz) Type / Floating (Fixed Weight)  
Hook / #4X Ring / Line Eye #3 - Hook Eye #3 Range / 2.5~3.5m (10~12ft)

NEW COLORS · AVAILABLE NOW



## INDEX

02. CEO & CHIEF DESIGNER MASAHIRO ADACHI

### CONCEPT

04. PART 1 / DESIGN & DEVELOPMENT

06. PART 2 / PRODUCTION

08. PART 3 / GLOBAL COVERAGE

### REALIS

All-Purpose Brand

- 10 REALIS CONCEPT
- 12 REALIS FANG OPS CONCEPT
- 14 REALIS FANG OPS PROTOTYPES **NEW**
- 16 REALIS FANGBAIT SR/DR
- 18 REALIS FANGBAIT PIKE/SW LIMITED **NEW**
- 19 REALIS SOFTBAIT CONCEPT
- 20 REALIS V-TAILSHAD3™ **NEW**
- 21 REALIS NINMUSHI **NEW**
- 22 REALIS ONIMASU 188F/188S **NEW**
- 24 REALIS PENCILPOPPER110/148
- 26 REALIS CRANK G87 15A/20A / G-Fix
- 28 REALIS SPINBAIT / SPYBAITING
- 29 REALIS SPINBAIT 80/90/80 G-Fix
- 30 REALIS JERKBAIT 100SP/110SP/100DR
- 32 REALIS JERKBAIT 120SP/120F
- 33 REALIS JERKBAIT SW/PIKE LIMITED **NEW**
- 34 REALIS CRANK M62 5A / M Line
- 35 REALIS CRANK M65 8A/11A / M Line
- 36 REALIS PENCIL 85/110
- 37 REALIS PENCIL 110 WT SW LIMITED
- 38 REALIS POPPER64
- REALIS SHINMUSHI / Grade A
- 39 REALIS ROZANTE 63SP/77SP / Grade A **NEW**
- REALIS MINNOW80SP
- 40 REALIS VIBRATION 62/68
- 41 REALIS VIBRATION 62/68 / G-Fix
- 42 REALIS SHAD 52MR/59SR/59MR/62DR
- 44 REALIS DEPTH CHART
- 46 REALIS ACTUAL SIZE

### SALTWATER

Shore / Off-shore / Micro World

- 48 SALTWATER CONCEPT
- 50 TideMinnow Slim 120/140/175/200
- 52 TideMinnow Slim 140/175/200 FLYER
- 54 TideMinnow 75SPRINT
- TideMinnow 90S
- TERRIF DC-7/DC-9 BULLET
- TERRIF DC-12 TYPE I
- 55 TideMinnow 125/145 SLD-F
- TideMinnow 135/150 SURF
- MOAB120F
- 56 BeachWalker Flipper **NEW**
- 57 BeachWalker Fulcrum
- BeachWalker Axcion
- BeachWalker J20MD
- 58 BeachWalker Haul Head/Shad/Fish **NEW**
- 59 BayRUF MANIC
- 60 SHORE FISHING ACTUAL SIZE
- 
- 63 PressBait 85
- PressBait FUSION90
- PressBait KAMUY110 HEAVY WEIGHT
- PressBait 125HD
- PressBait SAIRA
- 65 ROUGHTRAIL Aomasa148F/148S/188SF
- 66 ROUGHTRAIL BLAZIN
- ROUGHTRAIL 130S
- 67 TideVib SCORE78
- TideVib SCORE100 **NEW**
- TideVib Slim140
- LARUS Minnow95/34
- 68 OFF-SHORE FISHING ACTUAL SIZE
- 
- 70 TETRAWORKS KURAKURA **NEW**
- TETRAWORKS POCOPOCO F
- TETRAWORKS YURAMEKI
- TETRAWORKS PERAKKO
- 71 TETRAWORKS TOTO42S
- TETRAWORKS TOTOSHAD
- TETRAWORKS IKAKKO
- TETRAWORKS BIVI

### SPEARHEAD

The Ryuki Brand

- 72 SPEARHEAD RYUKI CONCEPT
- 75 SPEARHEAD RYUKI45S/50S/60S/70S
- SPEARHEAD RYUKI 80S
- SPEARHEAD RYUKI 95S **NEW**
- 76 SPEARHEAD RYUKI50F/70F
- SPEARHEAD RYUKI50MDF/70MDF
- SPEARHEAD RYUKI VIB **NEW**
- 77 SPEARHEAD RYUKI SINGLE LIMITED **NEW**
- SPEARHEAD RYUKI SW LIMITED **NEW**

### OTHER

- 78 MICRO WORLD & TROUT ACTUAL SIZE
- 79 VALKEIN
- 80 LURE DEPTH CHART
- 82 DUO PRO STAFF
- 84 ORIGINAL ACCESSORIES
- 85 GLOBAL DISTRIBUTORS

2017 CATALOGUE  
DUO CUSTOM BAITS

# REALIS PENCIL 85/110

Form, function and quality unified in the surface fleet.

Realis Topwater consisting of Pencil 85/110, Popper 64 and newly added Shinmushi not only reached objective of triple threat of form, function and quality; it set a standard for all walking and popping baits.

The innovative topwater line-up provides an angler with the ability to reach his target in a single cast, immediately initiate walking-action and "call" the fish from greater distances.



## PENCIL 85

Length/85mm (3-1/3") Weight/9.7g (3/8oz) Type/Floating (Moving Weight)  
Hook/#6X Ring/Hook Eye #2

NEW COLOR RELEASE • JUNE 2017



## PENCIL 110

Length/110mm (4-3/8") Weight/20.5g (3/4oz) Type/Floating (Moving Weight)  
Hook/#2X Ring/Hook Eye #3

NEW COLOR RELEASE • MARCH 2017



# REALIS PENCIL 110 WT (SW LIMITED)

## PENCIL 110 SW LIMITED

Length/110mm (4-3/8") Weight/22.5g (3/4oz) Type/Floating (Moving Weight)  
Hook/#2X Ring/Line Eye #3-Hook Eye #3

NEW COLOR RELEASE • APRIL 2017

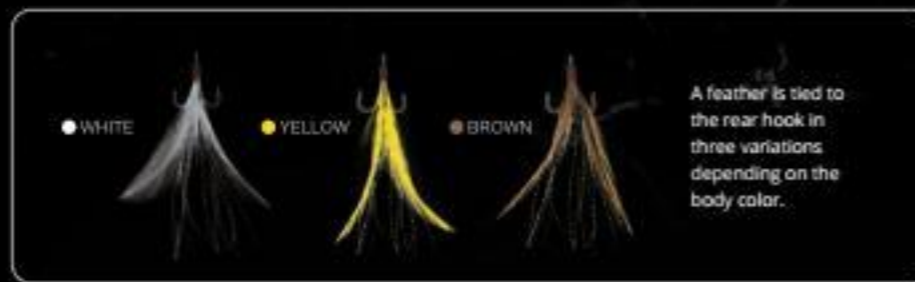
### Saltwater tune for even more lethal Pencil 110 sessions

Continuing in the trend of adjusting more to individual markets, we have introduced SW Limited version of Pencil 110, which will not be just a new color range, but also a weight tune to better handle the rough waters. The weight has been adjusted by two grams, totaling at 22.5g offsetting some of the buoyancy for easier handling in waves and rough waters. The additional weight inclusion even further improved the already often praised castability making it that much more of a lethal weapon even in saltwater.



# REALIS POPPER64

Length / 64mm (2-1/2" in) Weight / 9g (3/8oz)  
 Type / Floating (Fixed Weight) Hook / #6X Ring / Line Eye #2 - Hook Eye #2



# REALIS SHINMUSHI

Length / 40mm (1-5/8" in) Weight / 5.7g (1/5oz)  
 Type / Floating (Fixed Weight) Hook / #10 Ring / #1.5

NEW COLOR RELEASE • MAY 2017

*The ultimate cicada lure packing the highest level of customization*

**Grade A**

The Realis Shinmushi has incorporated the actions of a "hard" body and "soft" rubber legs, creating a 3 dimensional pulsation that calls fish to surface. This cicada imitation will induce bites with its silhouette and pulsation affect and will automatically induce bites while moving or just resting on the water.



# REALIS ROZANTE63SP/77SP

NEW PRODUCT

[63SP] Length / 63mm (2-1/2" in) Weight / 5g (1/5oz) Type / Suspending (Magnet Assisted Weight)  
 Hook / #10 Ring / Line Eye #1.5 - Hook Eye #2 Range / 0.6~0.8m (2~3ft)  
 [77SP] Length / 77mm (3-1/8" in) Weight / 8.4g (3/8oz) Type / Suspending (Magnet Assisted Weight)  
 Hook / #8 Ring / Line Eye #3 - Hook Eye #3 Range / 0.7~0.9m (2~3ft)

NEW COLOR / NEW PRODUCT RELEASE • MARCH 2017

*A finesse jerkbait with superior targeting and fluid darting*

The bulky body of Rozante has been fitted with a magnet-assisted moving weight system for superb castability even on light gear. The pulsation created by the lure is more short pitched action imitating baitfish fleeing from a hungry predator. Furthermore, the lure can be worked as a shad type lure with a panicking dart like action through twitching of the rod.



**Grade A**

ROZANTE63SP/77SP NEW



# REALIS MINNOW80SP

Length / 80mm (3-1/8" in) Weight / 4.7g (1/5oz) Type / Suspending (Fixed Weight)  
 Hook / #10 Ring / Line Eye #2 - Hook Eye #2 Range / 0.4~0.8m (1~3ft)

NEW COLOR RELEASE • APRIL 2017



# REALIS

## VIBRATION62/68

### 62/68 G-Fix



*Explosive performance packed in the thinnest profile*

It's no mistake. This is one of the thinnest lipless crankbaits ever constructed. Its precision aerodynamics delivers unimaginable shedding of lure drag, allowing the lure to cut through water in unprecedented speed and balance. The tight profile is met with tight vibration emitted in Realis Vibration.

Realis Vibration was designed specifically to improve trajectory, increase accuracy, trace deeper and provide better control. The advanced design coupled with performance tuning provides the lure a fluid resistance allowing the angler a repertoire of retrieves.

The unique actions allows for the lure to be engaged effortlessly. Drop your rod tip and this lure darts to the lake bottom, but lift it and it quickly regains balance and begins its tracing. Its tight but natural vibration is different from traditional lures, a refreshing display of innovation.

#### VIBRATION62

Length/62mm(2-1/2") Weight/11g(3/8oz) Type/Sinking(Fixed Weight)  
Hook/#BX Ring/Line Eye#2-Hook Eye#2

NEW COLOR RELEASE - APRIL 2017



#### VIBRATION68

Length/68mm(2-5/8") Weight/16g(5/8oz) Type/Sinking(Fixed Weight)  
Hook/#BX Ring/Line Eye#2-Hook Eye#2



#### VIBRATION62 G-Fix

Length/62mm(2-1/2") Weight/14.5g(1/2oz) Type/Sinking(Fixed Weight)  
Hook/#BX Ring/Line Eye#2-Hook Eye#2

NEW COLORS - AVAILABLE NOW



#### VIBRATION68 G-Fix

Length/68mm(2-5/8") Weight/21g(3/4oz) Type/Sinking(Fixed Weight)  
Hook/#BX Ring/Line Eye#2-Hook Eye#2

NEW COLORS - AVAILABLE NOW



# REALIS

## SHAD52MR / 59SR

## 59MR / 62DR

**Tough bite? School is in session.**

This group of shad means, "school is in session". If you're looking for a deadly finesse lure able to cover several depth columns, you've found it. - Welcome to the Realis Shad series.

This quartet of Shad; 52MR, 59SR, 59MR and 62DR; is truly finesse fishing at its best.

Most petite baits are extremely difficult to manage due to their weight and profile, however with Realis Shad, an elaborate weight transfer system utilizing magnets to seat the ballast has been installed into the cavity.

An extremely balanced lure, the roll action gives off a compressed shimmer and flash when ripped. The pitch angle is set by the ballast system and works to stop when pausing a retrieve. There's no surging or drifting.

For the ultimate in finesse application, invest in the ultimate shad school. Realis Shad will cover you shallow or deep.



### SHAD52MR

■Length/52mm(2" in) ■Weight/3.8g(1/8oz) ■Type/Suspending (Magnet Assisted Weight)  
 ■Hook/#10 ■Ring/Line Eye#1-Hook Eye#1 ■Range/0.8~1.5m(2~5ft)



### SHAD59SR

■Length/59mm(2-3/8" in) ■Weight/4.7g(1/6oz) ■Type/Suspending (Magnet Assisted Weight)  
 ■Hook/#10 ■Ring/Line Eye#1-Hook Eye#1.5 ■Range/0.8~1.2m(2~4ft)



### SHAD59MR

■Length/59mm(2-3/8" in) ■Weight/4.7g(1/6oz) ■Type/Suspending (Magnet Assisted Weight)  
 ■Hook/#10 ■Ring/Line Eye#1-Hook Eye#1.5 ■Range/1.0~2.0m(3~7ft)

NEW COLORS • AVAILABLE NOW



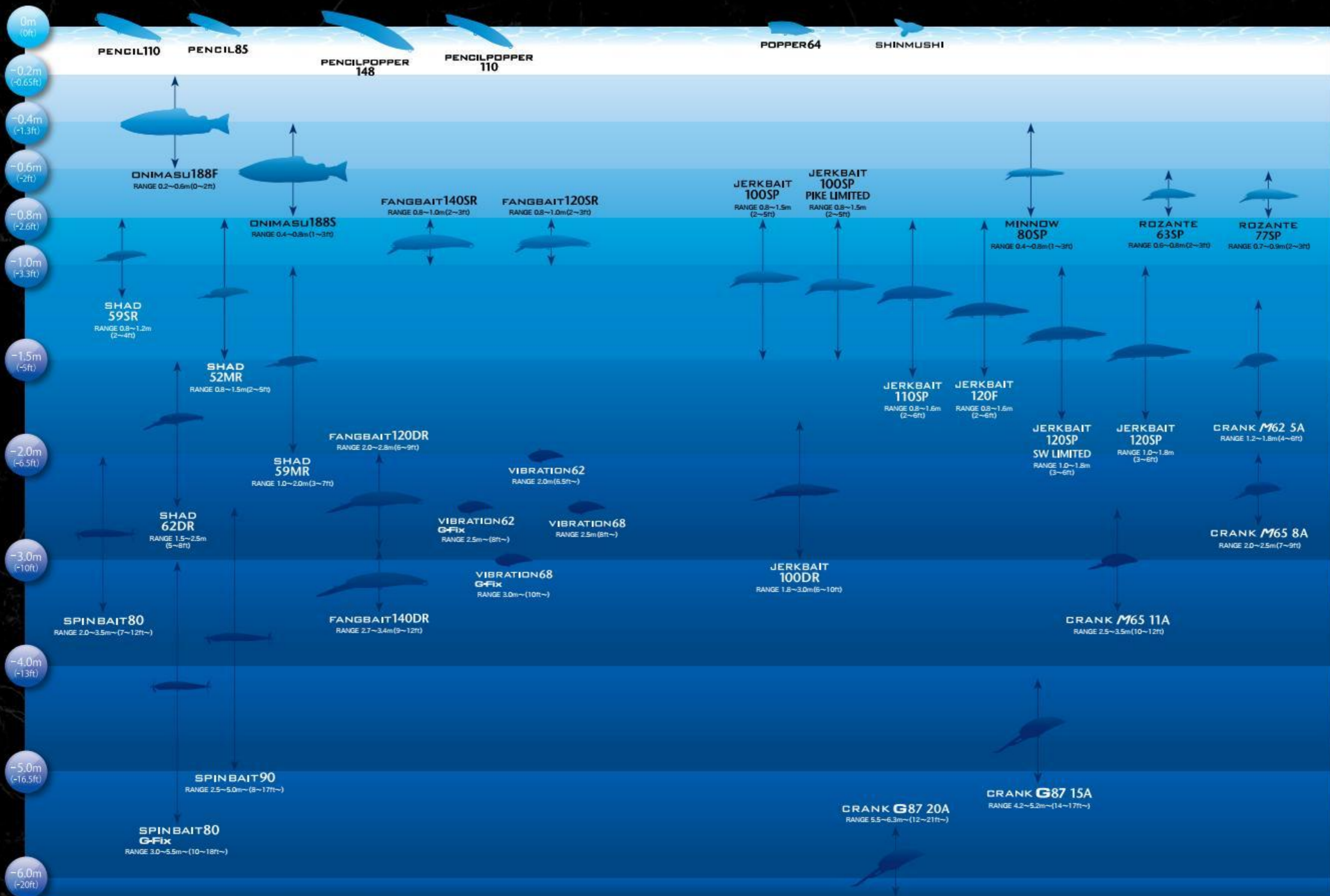
### SHAD62DR

■Length/62mm(2-1/2" in) ■Weight/6.0g(1/4oz) ■Type/Suspending (Magnet Assisted Weight)  
 ■Hook/#8 ■Ring/Line Eye#1.5-Hook Eye#1.5 ■Range/1.5~2.5m(5~8ft)

NEW COLORS • AVAILABLE NOW







# REALIS DEPTH CHART

The depth of the lures might vary depending on conditions. Please use the depth chart as a general guide.

REALIS  
**ACTUAL SIZE**

110mm  
PENCIL110

148mm  
PENCILPOPPER148

64mm  
POPPER64

85mm  
PENCIL85

110mm  
PENCILPOPPER110

90mm  
SPINBAIT90

40mm  
真虫

62mm  
SHAD62DR

80mm  
MINNOW80SP

80mm  
SPINBAIT80

59mm  
SHAD59MR

59mm  
SHAD59SR

77mm  
ROZANTE77SP

100mm  
JERKBAIT100SP

52mm  
SHAD52MR

63mm  
ROZANTE63SP

110mm  
JERKBAIT110SP

87mm  
CRANK G87 20A

120mm  
JERKBAIT120F JERKBAIT120SP

87mm  
CRANK G87 15A

100mm  
JERKBAIT100DR

140mm  
FANGBAIT140SR

65mm  
CRANK M65 11A

120mm  
FANGBAIT120SR

65mm  
CRANK M65 8A

140mm  
FANGBAIT140DR

68mm  
VIBRATION68

62mm  
CRANK M62 5A

120mm  
FANGBAIT120DR

62mm  
VIBRATION62

## SALTWATER

*Shore / Off-Shore / Micro World*

When it comes to saltwater fishing, the DUO brand has had a historical mainstay. Productive lures banded under Tide Minnow, Press Bait or Rough Trail series have an extensive reputation in the global field and continue to dominate the international salt life by adapting to ever-changing conditions.

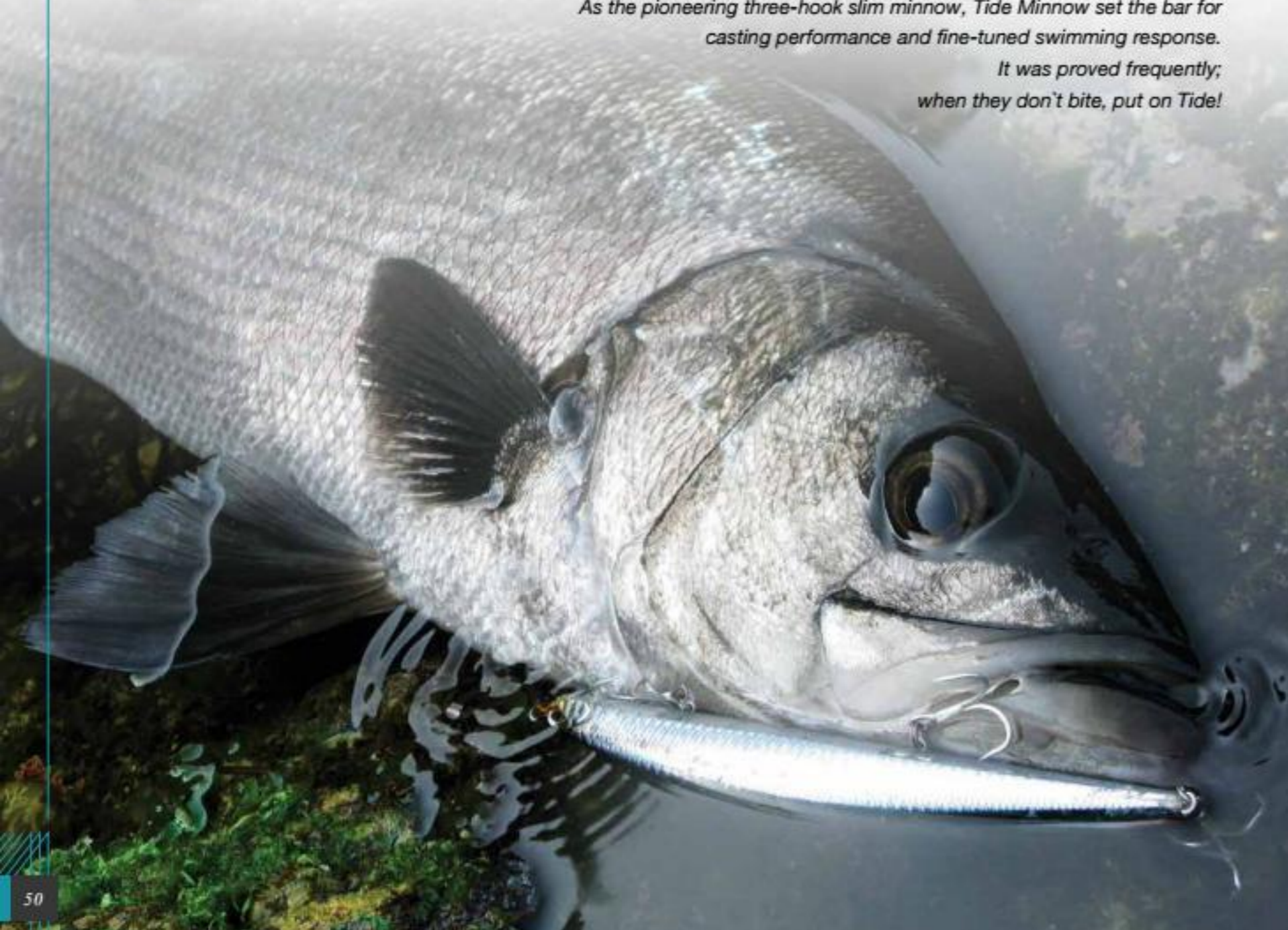


## Tide Minnow Slim

Legendary name for seabass anglers came to redefine the standards of the body size.

As the pioneering three-hook slim minnow, Tide Minnow set the bar for casting performance and fine-tuned swimming response.

It was proved frequently; when they don't bite, put on Tide!



## Tide Minnow Slim 120

Length/120mm(4-3/4") Weight/13g(1/2oz) Type/Floating(Moving Weight) Hook/#6 Ring/Hook Eye#3 Range/0.6~1.0m(2~3ft)  
Can become striking if used in freshwater or in low water temperature

NEW COLOR RELEASE • SEPTEMBER 2017

Starting point of slim minnows



## Tide Minnow Slim 140 | 175

[140] Length/140mm(5-1/2") Weight/18g(5/8oz) Type/Floating(Moving Weight) Hook/#6 Ring/Hook Eye#3 Range/0.6~1.0m(2~3ft)  
[175] Length/175mm(6-7/8") Weight/27g(1oz) Type/Floating(Moving Weight) Hook/#4 Ring/Hook Eye#3 Range/0.8~1.3m(2~4ft)

NEW COLOR RELEASE • APRIL 2017

A pioneering, often imitated long body design



## Tide Minnow Slim 200

Length/200mm(7-7/8") Weight/27g(1oz) Type/Floating(Moving Weight) Hook/#3 Ring/Hook Eye#3 Range/0.6~0.9m(2~3ft)

NEW COLOR RELEASE • APRIL 2017

The ultimate long minnow





## Tide Minnow Slim FLYER

Continuing to push the boundaries in the casting game, Flyer series was built to lead the aerial warfare. With the sinking setting of Tide Minnow Advance Line, anglers are able to further explore waters both horizontally and vertically guaranteeing that their target has nowhere to hide.



## Tide Minnow Slim 140 FLYER

Length/140mm(5-1/2") Weight/21g(3/4oz) Type/Sinking(Moving Weight) Hook/#6 Ring/Hook Eye#3 Range/0.8~1.1m(2~4ft)

NEW COLOR RELEASE • MAY 2017

A model optimized to maximize the casting distance



## Tide Minnow Slim 175 FLYER

Length/175mm(6-7/8") Weight/29g(1oz) Type/Sinking(Moving Weight) Hook/#4 Ring/Hook Eye#3 Range/0.9~1.4m(3~5ft)

NEW COLOR RELEASE • MAY 2017

The top carry distance in the Tide Minnow series



## Tide Minnow Slim 200 FLYER

Length/200mm(7-7/8") Weight/29.3g(1oz) Type/Sinking(Moving Weight) Hook/#3 Ring/Line Eye#3 Hook Eye#3 Range/0.7~1.0m(2~3ft)

NEW COLOR RELEASE • MAY 2017

The ultimate size, the ultimate performance





## TideMinnow 75 SPRINT

Length/75mm (3") Weight/11g (3/8oz) Type/Sinking (Fixed Weight)  
Hook/#10 Ring/Line Eye#2-Hook Eye#2 Range/0.5~0.9m (2~3ft)

NEW COLOR RELEASE • JULY 2017

**A versatile minnow to be controlled aggressively**

Sprint is a highly responsive sinking minnow which can be utilized in various fields and target various species, both in fresh and saltwater. It promptly reacts to twitching and jerking of the rod, in addition to performing well at both slow to high speed retrieval.



## TERRIF DC-7 BULLET

Length/75mm (3") Weight/10.2g (3/8oz)  
Type/Slow Floating (Magnet Assisted Weight)  
Hook/#6 Ring/Line Eye#2-Hook Eye#2 Range/0.1~0.3m (0~1ft)

NEW COLORS • AVAILABLE NOW

**Down-sized version for aggressive approach**

The Terrif DC-7 Bullet was created for use in the shallow waters during sessions where anglers prefer a somewhat smaller silhouette. The weight transfer system in the DC-7's body helps the lure bullet through the air to reach the unreachable with ordinary small plugs. In addition, we have improved the darting width and sharpness of action applied by the anglers rod work.



## TERRIF DC-9 BULLET / DC-12 TYPE I

[DC-9] Length/90mm (3-1/2") Weight/15g (1/2oz)  
Type/Slow Floating (Magnet Assisted Weight)  
Hook/#4 Ring/Line Eye#3-Hook Eye#3 Range/0.2~0.5m (1~2ft)

[DC-12] Length/120mm (4-3/4") Weight/19g (5/8oz)  
Type/Slow Sinking (Magnet Assisted Weight)  
Hook/#6 Ring/Line Eye#3-Hook Eye#3 Range/0.2~0.5m (1~2ft)

NEW COLOR RELEASE • AUGUST 2017

**The strategic shallow model**

The unique design of the lip and 'suspended' weighting have allowed the DC-9/12 to trace just below the water's surface at various retrieval speeds. One can also perform a side-to-side sliding action with some technical rod work, which replicates baitfish on the run.

## TideMinnow 90S

Length/90mm (3-1/2") Weight/15g (1/2oz) Type/Sinking (Moving Weight)  
Hook/#4 Ring/Line Eye#3-Hook Eye#3 Range/0.4~0.7m (1~2ft)

NEW COLOR RELEASE • AUGUST 2017

**A bullet-shaped sinking minnow**

By fitting two tungsten spheres and a fixed weight in a 90mm body, the 90S has far greater casting capabilities than one would expect for its body size. This lure is ideal for demanding situations that call for downsizing the lure without sacrificing its casting distance.



## TideMinnow 135 / 150 SURF

[135] Length/135mm (5-1/3") Weight/24g (7/8oz)  
Type/Floating (Magnet Assisted Weight)  
Hook/#4 Ring/Line Eye#3-Hook Eye#3 Range/0.5~0.9m (2~3ft)

[150] Length/150mm (5-7/8") Weight/29g (1oz)  
Type/Floating (Magnet Assisted Weight)  
Hook/#3 Ring/Line Eye#4-Hook Eye#4 Range/0.5~1.0m (2~3ft)

NEW COLORS • AVAILABLE NOW

**Targeting the lunkers that are feeding on large baitfish**

This is a user-friendly minnow which has none of the negative characteristics of most other large lures on the market, such as difficulty casting or a heavy feel while reeling. We have set a shallow diving depth, making it possible to retrieve the lure dead slow while still tracing it right underneath the surface of the water.

## TideMinnow 125 / 145 SLD-F

[125] Length/125mm (4-7/8") Weight/14.5g (1/2oz) Type/Floating (Moving Weight)  
Hook/#6 Ring/Line Eye#3-Hook Eye#3 Range/0.5~0.8m (2~3ft)

[145] Length/145mm (5-3/4") Weight/20.5g (3/4oz) Type/Floating (Moving Weight)  
Hook/#4 Ring/Line Eye#3-Hook Eye#3 Range/0.7~1.0m (2~3ft)

**Incomparable castability**

Tide Minnow SLD series was developed as a slim-type, long distance model, with castability as the top priority. The strong 'wobble and roll' action not only appeals to the game fish, but also allows anglers to judge the movement of the water, making it a great pilot lure for covering an extensive area.



## MOAB 120F

Length/120mm (4-3/4") Weight/13g (1/2oz)  
Type/Floating (Magnet Assisted Weight)  
Hook/#6 Ring/Line Eye#3-Hook Eye#3 Range/0.6~1.0m (2~3ft)

NEW COLOR RELEASE • MAY 2017

**Mother of all baits**

Breaking previous conceptual boundaries, MOAB was created in search for a 'productive lure' for all species, freshwater or saltwater. A magnet secures the main moving weight giving a consistent swimming action. This swim balance is suited for not only strong rip currents but also fast flowing river currents that home to trout.

Using circuit board material for the lip has dramatically increased its strength and with a lip that is much less likely to break, the angler can pursue a much more aggressive approach.





CEO & CHIEF DESIGNER

## Masahiro Adachi

Since its inception, DUO has forged a 20-year standard in lure manufacturing that has utilized future technologies and innovation. A company beyond its time, the DUO concept of commitment and quality is unprecedented and attained only at the highest level of execution and clearly exceeds today's perceptions.

The personification of this philosophy is DUO's CEO and chief designer, Masahiro Adachi, one of the most respected lure designers in Japan.

Masahiro Adachi's designs were first introduced in the early 90's when he shocked the lure world with his engineering. Adachi's designing process originates from thought, but his understanding of lure action developed from studying the intricate swim behavior of live bait-fish. Another vital element to Mr. Adachi's gift is his detailed understanding of predator fish and their biology. Mr. Adachi's philosophy of "functional beauty" means he is trying to create lures that both unify in form and function, making lures that are creatively known as "better than the real one".

Adachi does not create lures in the traditional JDM way with the use of drawing and CAD. Rather, every creation begins as a carving. Adachi mentally envisions the swim-action of his lure and begins carving a design from ABS plastic. The process could be considered organic. Mr. Adachi's designs are original, sometimes so intricate that they require months to perfect.

The integration of hand created designs and high precision digital constructs are imperative priorities for the creator, Mr. Adachi.

This approach will remain a trademark for DUO lures.

アドアチ

# Beach Walker Flipper

NEW  
PRODUCT

[32] ■Length/70mm(3"n) ■Weight/32g(1-1/8oz) ■Type/Sinking  
■Hook/Front: #8 Rear: #6 ■Ring/Hook Eye#7

[40] ■Length/80mm(3-1/8"n) ■Weight/40g(1-3/8oz) ■Type/Sinking  
■Hook/#6 ■Ring/Hook Eye#3

NEW PRODUCT RELEASE - AVAILABLE NOW

## The new casting king of the Beach

The first metal jig in BW series will enable anglers to reach new fishing grounds. Though heavy metal jigs tend to be difficult to utilize in most situations and anglers seem to avoid using them, "Flipper" can search a vast area efficiently and three dimensionally.



GHA0018 Hiramai

GHA0087 Mazume Sardine

GHA0279 Taureglau GB

GHA0282 Hotta Sardine

GDA0288 Sparkling Green Candy

GQA0173 Ishimochi PB

GQA0184 Hiram Candy

GQA0238 Strawberry Pink

GQA0242 Pink Gold OB

GQA0280 Hiram Pink B

HOTTA MITSUYA  
堀田光哉

Beach Walker



## Beach Walker Fulcrum

■Length/95mm(3-3/4"n) ■Weight/31g(1-1/8oz) ■Type/Heavy Sinking(Fixed Weight)  
■Hook/#4 ■Ring/Hook Eye#3 ■Range/1.0~2.0m(3~6ft)

NEW COLOR RELEASE - MAY 2017

### Heavy sinking minnow optimized for surf fishing

The heavy weight setting allows "Fulcrum" to rocket through the air while the "Bevel" lip design assists the lure to grab the water. It is equipped with a strong rolling and an irregular flashing action which stimulates feeding instincts of various targets.



DBA0180 Sakura Sardine OB NEW

DDA0171 Pink Zebra Glow

DDA0199 Shocking Pink

AHA0087 Mazume Sardine

AHA0119 Pink Sardine

GHA0279 Taureglau

ADA0145 Firegold NEW

AQA0173 Ishimochi PB

ADA0242 Pink Gold OB

GQA0245 Gold Rush



DBA0180 Sakura Sardine OB NEW

AHA0087 Mazume Sardine

GHA0184 Clear Pink Sardine

GHA0279 Taureglau

ADA0145 Firegold NEW

GQA0175 Hiram Pink GB

GQA0184 Hiram Candy

GQA0197 Bloody Sardine GB

AQA0242 Pink Gold OB

GQA0280 Hiram Pink B



## Beach Walker Axcion

■Length/95mm(3-3/4"n) ■Weight/30g(1oz) ■Type/Heavy Sinking(Fixed Weight)  
■Hook/#4 ■Ring/Hook Eye#3 ■Range/0.6~1.5m(2~5ft)

NEW COLOR RELEASE - MAY 2017

### Versatility! Select the lure "Axcion" by retrieval speed

With its 95mm and 30g heavy weight body and bevel lip, we have minimized the air-resistance and stress on the lure from strong cross winds. Axcion produces casting distance which rivals those of metal jigs not only for experts but also beginners.



ADA0119 Pink Sardine

DDA0171 Pink Zebra Glow NEW

AHA0011 Sardine

AHA0087 Mazume Sardine NEW

GHA0282 Hotta Sardine NEW

GJA0101 Zebra Glow NEW

GQA0245 Gold Rush NEW

AQA0203 Chart Head Seyori NEW

## Beach Walker 120MD

■Length/120mm(4-3/4"n) ■Weight/20g(3/4oz) ■Type/Sinking(Moving Weight)  
■Hook/#6 ■Ring/Line Eye#3-Hook Eye#3 ■Range/0.8~1.5m(2~5ft)

NEW COLORS - AVAILABLE NOW

### A search bait for a wide array of species

Sinking diver 120MD was created to efficiently scout the vast coastline. With its reliable casting ability, action balance designed to capture the complex current and a trace range more extensive than any other normal type minnow, 120MD will exert its true abilities as a search bait for surf fishing.





## Beach Walker Haul Head

Preserving the ultimate efficiency reputation of hard baits, DUO's soft bait line has been initiated with Beach Walker Haul. The intention was to make a lure focusing on user-friendliness not only via the superior castability, but also by developing an original rigging system and integrating basic performance improvements like the hooking system and range control; allowing the lure to appeal to variety of species around the world.

### NEW COLORS - AVAILABLE NOW

[Haul Jighead] ■ Weight/14g(1/2oz) · 21g(3/4oz) · 27g(1oz) · 35g(1-1/4oz) ■ Hook/#5 ■ Quantity/2pcs of jighead and 4 pieces of hook  
[Haul Set] ■ Weight/14g(1/2oz) · 21g(3/4oz) · 27g(1oz) ■ Hook/#5 ■ Quantity/1pc of jighead and 2pcs of shad and 2pcs of hook



## Beach Walker Haul Shad

[Haul Shad] ■ Size/3-3/4"n · 4-1/2"n · 5"n ■ Quantity/5pcs



## Beach Walker Haul Fish



NEW PRODUCT RELEASE - AVAILABLE NOW

[Haul Fish] ■ Size/4"n ■ Quantity/5pcs



● Glow color



## Bay RUF MANIC

Bay Ruf Manic was designed with a totally new concept in mind.

The state of the art action "Manic Movement" created by the Bay Ruf Manic is like no other action seen before.

The lure's body size, volume, buoyancy, weighting, and body shape have all been delicately adjusted.

The action created by this sensitively balanced lure is a tight rolling only; there is no wobbling or sinusoidal action.

The lure will float to the subsurface and create an exquisite wake.

The tight rolling action will add a weak but unique swell in the V shaped wake, appealing more efficiently to the game fish.

This tight rolling pulsating action leaves a vibrant wake even at the slowest retrieval speeds mesmerizing myriad of species.



Shore Fishing  
**ACTUAL SIZE**

TideMinnow *Stim 200* 200mm

TideMinnow *Stim 175* 175mm

TideMinnow *Stim 140* 140mm

TideMinnow *Stim 120* 120mm

TideMinnow *75 SPRINT* 75mm

TideMinnow *90S* 90mm

TideMinnow *145SLD* 145mm

TideMinnow *125SLD* 125mm

*MOR & 120F* 120mm

TideMinnow *Stim 200 FLYER* 200mm

TideMinnow *Stim 175 FLYER* 175mm

TideMinnow *Stim 140 FLYER* 140mm

*Head Fish* 4-1/5in"

*Head Shad* 4-1/2in"

*Head Shad* 3-3/4in"

TideMinnow *150 SURE* 150mm

TideMinnow *135 SURE* 135mm

*Head* 35g

*Head* 21g

*Head* 14g • 21g

*Flipper* 10mm

BeachWalker *120MD* 120mm

TERRIF DC-12 TYPE I 120mm

TERRIF DC-9 BULLET 90mm

TERRIF DC-7 BULLET 75mm

BeachWalker *Fulcrum* 95mm

BeachWalker *Archer* 95mm



# Press Bait

The originally conceived series of jig minnows aims to represent the best of both worlds – the castability of the metal jigs and the refined action and responsiveness of hard baits. With the ABS bodies being heavily filled with weight and sufficient strength, Press Bait models will be a lethal weapon for both shore and off-shore fishing.



## Press Bait 85

Length/85mm (3-3/8") Weight/22g (1oz) Type/Sinking(Fixed Weight) Hook/#6 Ring/Hook Eye#3

NEW COLOR RELEASE - AUGUST 2017

Versatile saltwater jig minnow



## Press Bait FUSION 90

Length/90mm (3-1/2") Weight/31g (1-1/8oz) Type/Sinking(Fixed Weight) Hook/#2 Ring/Hook Eye#3

NEW COLORS - AVAILABLE NOW

An innovative fusion of realism, castability and swimming action



## Press Bait KAMUY 110 HEAVY WEIGHT

Length/110mm (4-3/8") Weight/25g (7/8oz) Type/Sinking(Fixed Weight) Hook/高脚Single #1/0 Ring/Hook Eye#2

Optimum balance between casting and action



## Press Bait 125HD

Length/125mm (4-7/8") Weight/43g (1-1/2oz) Type/Sinking(Fixed Weight) Hook/— Ring/Hook Eye#4

NEW COLOR RELEASE - JUNE 2017

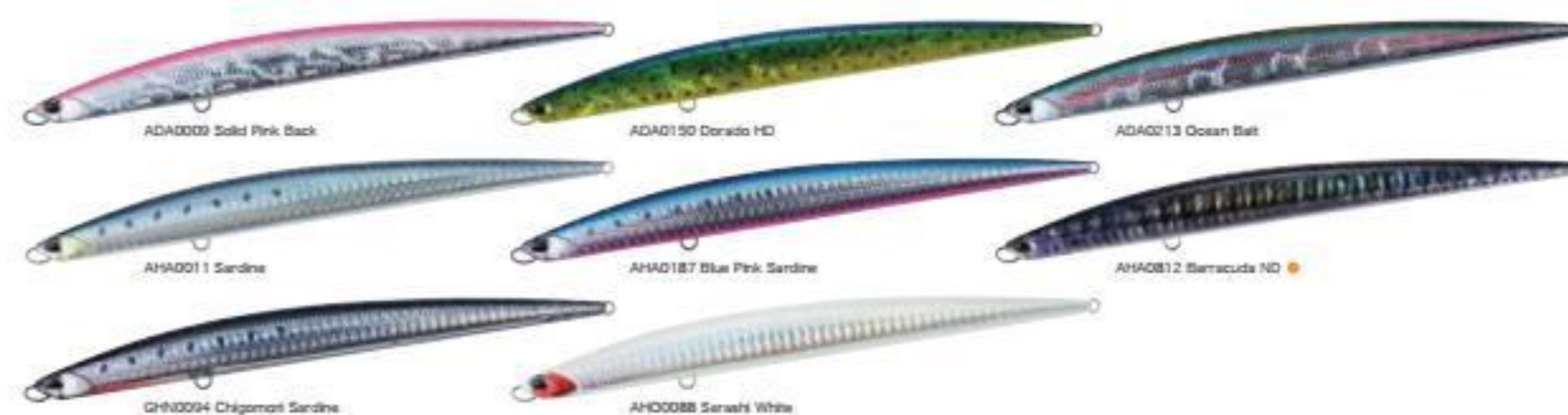
A heavy-duty, high response lure



## Press Bait SAIRA

Length/175mm (6-7/8") Weight/50g (1-3/4oz) Type/Sinking(Fixed Weight) Hook/#1 Ring/Hook Eye#4

A jig minnow mimicking thin bait fish





# 青吹

Aomasa

## ROUGHTRAIL



## ROUGHTRAIL

Aomasa

# 青吹 148F

■Length/148mm(5-7/8") ■Weight/38g(1-1/2oz)(47g/1-5/8oz rigged with hooks)  
 ■Type/Floating/Fixed Weight ■Hook/Ring:Sold separately(Recommended Hook: STX58 #2/0 Recommended Ring: #8) ■Range/0~0.2m(0~1ft)



### A revolutionary concept of a diving pencil

The unique body design of Aomasa rivals those wooden models with its sharp action, controllability and body strength. This lure can be easily controlled to stage "diving", "S-curve" and "sliding" action by novice or expert anglers in various field conditions.

## ROUGHTRAIL

Aomasa

# 青吹 1485/1885F

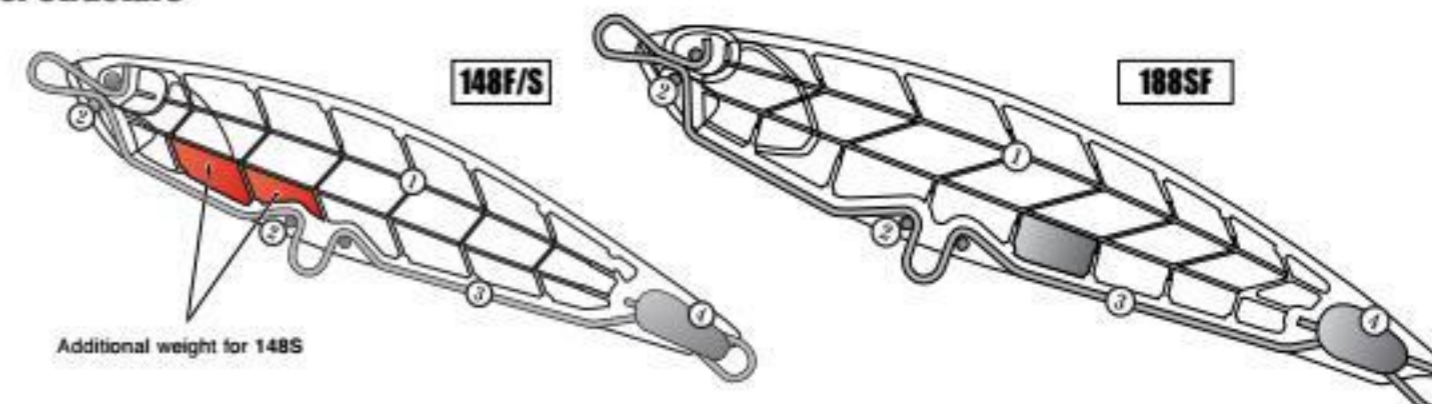
[1485] ■Length/148mm(5-7/8") ■Weight/67g(2-3/8oz) ■Type/Sinking(Fixed Weight)  
 ■Hook/Ring:Sold separately(Recommended Hook: STX58 #2/0 Recommended Ring: #8)  
 [1885F] ■Length/188mm(7-2/5") ■Weight/100g(3-1/2oz) ■Type/Slow Floating(Fixed Weight)  
 ■Hook/Ring:Sold separately(Recommended Hook: SPHX #4/0 Recommended Ring: #9)  
 ■Range/0~0.2m(0~1ft)



### Completing the Aomasa range for new depth applications

The outstanding castability of the new Aomasa models will surely be an advantage to those land based anglers. With weight adjustment, not only have we drastically increased the casting distance, but the lure is able to fall in a horizontal posture mimicking a dying or weak bait fish.

### Inner Structure



#### 1 Ladder rib structure

By integrating a ladder like rib structure in the interior, we have managed to create a strong body without sacrificing its lightness for greater maneuverability and response.

#### 2 Stainless-steel pin to secure the wire

We have inserted 3 different sized stainless-steel pins to secure the wire which runs through the body. This prevents the wire from coming loose, while reducing the weight by trimming the unnecessary meat off of the body.

#### 3 Out & Through wire structure

By running the wire through the outer side of the body, we were able to further reduce the plastic usually required around the wire, while increasing the air chamber for more buoyancy PAT.

#### 4 Wire inserted molded weight

By inserting the wire when forming the weight, we were able to create a large size injection pencil type lure with its weight distribution predominantly at the tail end. The application for design registration is currently being processed.



## ROUGHTRAIL **BLAZIN**

■Length/92mm(3-5/8") ■Weight/40g(1-3/8oz) ■Type/Heavy Sinking(Fixed Weight)  
■Hook/#4 ■Ring/Line Eye#4-Hook Eye#4 ■Range/1.5~2.0m(5~7ft)

NEW COLOR RELEASE - APRIL 2017

### A perfect balance of weight and action

The 92mm body has been packed with 40g of weight which exceeds most jig minnows. Even with the heavy weight settings, the bevel cut lip and the flip design tail creates lift, allowing the lure to initiate the action smoothly while maintaining its balance at high speed retrieval.



## ROUGHTRAIL **1305**

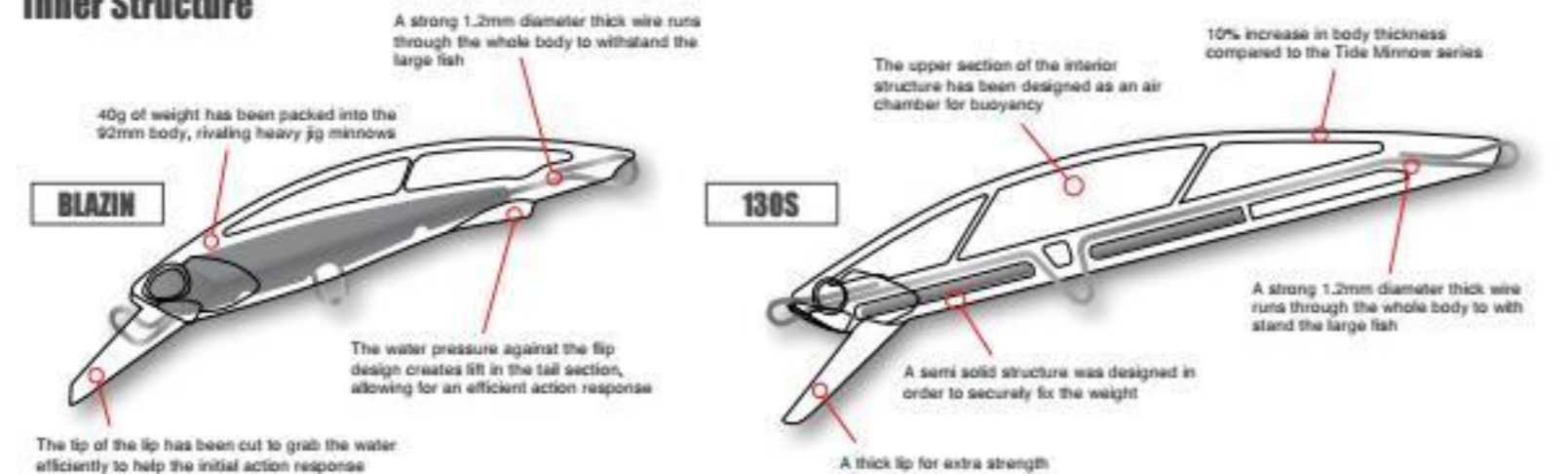
■Length/130mm(5-1/8") ■Weight/29g(1oz) ■Type/Sinking(Fixed Weight)  
■Hook/#1 ■Ring/Line Eye#4-Hook Eye#4 ■Range/1.0~1.5m(3~5ft)

### Swimming response under extreme conditions

With priority on strength and swimming response, 1305 was designed to handle areas where strong currents and large swells created by an uneven seabed make fishing difficult. It is able to trace a line in rough conditions without jumping out on the surface.



### Inner Structure



■ Glow color



## TideVib **SCORE 78**

■Length/78mm(3-1/8") ■Weight/28g(1oz) ■Type/Sinking(Fixed Weight)  
■Hook/#5 ■Ring/Hook Eye#3

NEW COLORS - AVAILABLE NOW

### A hybrid blade with translucent body

Score is a unique concept of a lure unifying the best features of a blade bait and injection hard bait. The wire-through structure of the lure enhances the strength, while the strong and wide vibrating pulsation will appeal to targets in vast areas.



## TideVib **Slim 140**

■Length/140mm(5-1/2") ■Weight/32g(1-1/8oz) ■Type/Sinking(Fixed Weight)  
■Hook/#3-R:#4 ■Ring/Line Eye#3-Hook Eye#3

### A new generation of slim vibration lures

We have drastically reduced the heavy reeling stress frequently seen in large bodied vibration type lures and were able to create a lure with a lighter reeling feel than the minnow, allowing anglers to utilize this lure for long durations.



■ Glow color

## TideVib **SCORE 100** NEW PRODUCT

■Length/100mm(3-7/8") ■Weight/35g(1-1/4oz) ■Type/Sinking(Fixed Weight)  
■Hook/#4 ■Ring/Line Eye#3-Hook Eye#3

NEW PRODUCT RELEASE - APRIL 2017

### Upsize for even wider applications

Tide Vib Score has found versatile application for both shore and off-shore fishing and we are finally answering the calls for larger size which expands the targets of this unique blade bait also to blue runners, on top of its standard commanding performance in the surf. Score 100 is yet another of DUO lures offering a progressive approach to lure fishing.



## LARUS Minnow **95/34**

■Length/95mm(3-3/4") ■Weight/34g(1-1/4oz) ■Type/Heavy Sinking(Fixed Weight)  
■Hook/#4 ■Ring/Hook Eye#4 ■Range/1.0~1.5m(3~5ft)

NEW COLOR RELEASE - SEPTEMBER 2017

### A heavyweight minnow with an original design concept

Larus is meant for offshore migratory fish species like bonito, tuna or dorado. The lips of heavy lures tend to get thick and bulky to ensure sufficient action and durability, however we created a sharp body with a metallic lip that gives the lure a great 'wobble and roll' action response and flashing effect of the flat body sides.

Off-Shore Fishing  
**ACTUAL SIZE**



# TETRAWORKS



The World of Micro Lures Has Never Been So Colorful



PLAYFUL & ADAPTABLE

## TETRAWORKS KURAKURA **NEW PRODUCT**

Length/30mm(1-1/8") Weight/2.5g(1/8oz) Type/Rattle Weight  
Hook/Original Single Red Hook Ring/Line Eye#1-Hook Eye#1 Range/0.9~1.2m(2~4ft)

NEW PRODUCT RELEASE - AVAILABLE NOW

A micro crank for those bottom eaters



## TETRAWORKS POCOPOCO F

Length/40mm(1-5/8") Weight/3.0g(1/10oz)  
Type/Floating(Fixed Weight) Hook/#12 Ring/Hook Eye#1

NEW COLOR RELEASE - JULY 2017

Micro popper for the topwater game



## TETRAWORKS YURAMEKI

Length/48mm(1-7/8") Weight/6.3g(1/4oz)  
Type/Sinking(Fixed Weight) Hook/#12  
Ring/Line Eye#1-Hook Eye#1 Range/0.2~0.6m(1~2ft)

NEW COLORS - AVAILABLE NOW

A sinking pencil with superior carrying distance



## TETRAWORKS PERAKKO

Length/48mm(1-7/8") Weight/4.6g(1/6oz)  
Type/Sinking(Fixed Weight) Hook/#12  
Ring/Hook Eye#1

Pulsating effect to attract the target



## TETRAWORKS TOTO42S

Length/42mm(1-5/8") Weight/2.8g(1/10oz) Type/Sinking(Fixed Weight)  
Hook/#12 Ring/Line Eye#1-Hook Eye#1 Range/0.3~0.6m(1~2ft)

NEW COLORS - AVAILABLE NOW

An almighty appealing standard sinking minnow



## TETRAWORKS TOTOSHAD

Length/48mm(1-7/8") Weight/4.5g(1/6oz) Type/Sinking(Fixed Weight)  
Hook/#12 Ring/Line Eye#1-Hook Eye#1 Range/0.8~1.5m(2~5ft)

NEW COLORS - AVAILABLE NOW

Micro shad guaranteeing reliable range tracing



## TETRAWORKS IKAKKO

Length/38mm(1-1/2") Weight/5.7g(1/5oz)  
Type/Sinking(Fixed Weight) Hook/#14  
Ring/Hook Eye#1

NEW COLOR RELEASE - SEPTEMBER 2017

A solid jig minnow allowing diverse approach



## TETRAWORKS BIVI

Length/40mm(1-5/8") Weight/3.8g(1/8oz)  
Type/Sinking(Fixed Weight) Hook/#14  
Ring/Line Eye#1-Hook Eye#1

A bona-fide micro vibration lure



## **SPEARHEAD**

*The Ryuki Brand*

Spearhead Ryuki was born to lead the global trout scene. It was not simply about creating a baiting lure. It was never about putting the design above the performance. It was about creating a new standard. A lure which does not allow for any followers. A lure to which there is no other. Not now and not in the future.

**SPEARHEAD RYUKI**





## SPEARHEAD RYUKI

Ryuki series keeps on expanding and now covers four types - sinking, floating, medium diving minnow, and vibration lure - a quartet that covers any condition. It is absolutely imperative to have these models in your lure box to tackle the complex current in the head waters and small streams near the big boulders, counter currents, and in the main flow.

## SPEARHEAD RYUKI 45S / 50S / 60S / 70S

[45S] ■Length/45mm(1-3/4") ■Weight/4g(1/8oz) ■Type/Sinking(Fixed Weight)  
■Hook/#12 ■Ring/Line Eye#1-Hook Eye#1 ■Range/0.4~0.6m(1~2ft)

[50S] ■Length/50mm(2") ■Weight/4.5g(1/8oz) ■Type/Sinking(Fixed Weight)  
■Hook/#12 ■Ring/Line Eye#1-Hook Eye#1 ■Range/0.4~0.8m(1~3ft)

[60S] ■Length/60mm(2-1/3") ■Weight/6.5g(1/4oz) ■Type/Sinking(Fixed Weight)  
■Hook/#10 ■Ring/Line Eye#1-Hook Eye#1 ■Range/0.4~0.8m(1~3ft)

[70S] ■Length/70mm(2-3/4") ■Weight/9g(1/3oz) ■Type/Sinking(Fixed Weight)  
■Hook/#10 ■Ring/Line Eye#2-Hook Eye#2 ■Range/0.6~1.0m(2~3ft)

NEW COLORS - AVAILABLE NOW

Realization of great castability and superb action response



## SPEARHEAD RYUKI 80S

■Length/80mm(3-1/8") ■Weight/12g(3/8oz) ■Type/Sinking(Fixed Weight) ■Hook/#8 ■Ring/Line Eye#2-Hook Eye#2 ■Range/0.7~1.2m(2~4ft)

NEW COLORS - AVAILABLE NOW

Large trout's favourite snack



## SPEARHEAD RYUKI 95S NEW PRODUCT

■Length/95mm(3-5/8") ■Weight/15g(1/2oz) ■Type/Sinking(Fixed Weight) ■Hook/#6 ■Ring/Line Eye#3-Hook Eye#3 ■Range/0.8~1.2m(2~4ft)

NEW PRODUCT RELEASE - AVAILABLE NOW

New king of the current



## Design & Development

DUO stands for form. DUO stands for function. Form and function aligned in perfect harmony – the functional beauty. DUO stands for the highest quality, the Nippon Quality. The absolute commitment to the highest quality to the level of DUO is unseen in this industry.

Since its foundation almost twenty years ago, DUO has set on a path to represent the very best in the lure fishing. The commitment to the highest level of quality has been built into the concept of the company and DUO has continuously pursued the cutting edge technology for lure development.

Our answer to this was a combination of classical and most recent technology - "hand carving" the master mold, precise duplication through 3D laser scanning and high-precision through 3D CAD/CAM.

Through the technological merging of different aspects, we have pursued the leading technology of molding for lure development.



### 1 Production of the Master

Mr. Adachi avoids use of computers for the initial body master, and carves from a block of ABS. The advantage is that it combines strength and rigid properties, as well as the rubbery toughness and specific gravity of the actual product.



### 2 Production of the Action Sample

The ABS carving is digitally scanned and a duplicate is created through machine cutting. The ballast of exact measures is inserted, weighed and tested for imparting of action to the lure.



### 3 Carved Electrode Manufacturing

Based on the action sample, outline data is measured to cut out a pillar shaped pure-copper electrode. The initial shape is formed by belt sander and the electrode is refined with a precision drill.



### 4 Finalizing the Carved Electrode

The finalized carved electrode is contoured to the exact preferred profile, the preciseness of which machine cutting through CG data cannot duplicate.



### 5 Production of the Inverted Data

The finalized electrode is precision scanned to 1/1000 3D tolerances, whereas 1/100 tolerance is the industry standard.



### 6 Machine Cutting of the Opposite Side

Inversion scanning is conducted to produce the opposite side of the body profile. Final brushing and softening of the surface is done by hand.



### 7 Rib Processing

The interior volume of the cavity is produced and the fixed interior space is directly carved out to create the planned rails and space for ballast.



### 8 Obtaining the First Injection Body Sample

The first injection bodies are created and tested for integrity and harboring components. Tolerances must be exact for ballast, hook positioning and lip angle. Once product passes precise testing, production is commenced.

# SPEARHEAD RYUKI 50F / 70F

[50F] ■Length/50mm(2"n) ■Weight/2.8g(1/10oz) ■Type/Floating(Fixed Weight)  
■Hook/#12 ■Ring/Line Eye#1-Hook Eye#1 ■Range/0.3~0.6m(1~2ft)

[70F] ■Length/70mm(2-3/4"n) ■Weight/5.3g(1/5oz) ■Type/Floating(Magnet Assisted Weight)  
■Hook/#10 ■Ring/Line Eye#2-Hook Eye#2 ■Range/0.3~0.7m(1~2ft)

NEW COLOR RELEASE - MARCH 2017

Floater for a natural approach in tough conditions



# SPEARHEAD RYUKI 50MDF / 70MDF

[50MDF] ■Length/50mm(2"n) ■Weight/3.4g(1/8oz) ■Type/Floating(Magnet Assisted Weight)  
■Hook/#12 ■Ring/Line Eye#1-Hook Eye#1 ■Range/0.5~1.0m(2~3ft)

[70MDF] ■Length/70mm(2-3/4"n) ■Weight/5.4g(1/5oz) ■Type/Floating(Magnet Assisted Weight)  
■Hook/#10 ■Ring/Line Eye#2-Hook Eye#2 ■Range/0.8~1.2m(3~4ft)

Trace the range smoothly with the medium deep diver



# SPEARHEAD RYUKI VIB

NEW PRODUCT

■Length/45mm(1-3/4"n) ■Weight/5.3g(1/5oz) ■Type/Sinking(Fixed Weight) ■Hook/#12 ■Ring/Line Eye#1-Hook Eye#1

NEW PRODUCT RELEASE - AVAILABLE NOW

Reach new spots; unlock new techniques



DUO International x D3 Custom Lures COLLABORATION



D3 BALANCER SINGLE HOOK

# SPEARHEAD RYUKI 45S / 50S / 60S / 70S SINGLE LIMITED

NEW PRODUCT

[45S] ■Length/45mm(1-3/4"n) ■Weight/4g(1/8oz) ■Type/Sinking(Fixed Weight)  
■Hook/#10 ■Ring/Line Eye#1-Hook Eye#1 ■Range/0.4~0.6m(1~2ft)

[60S] ■Length/60mm(2-1/8"n) ■Weight/6.5g(1/4oz) ■Type/Sinking(Fixed Weight)  
■Hook/#8 ■Ring/Line Eye#1-Hook Eye#1 ■Range/0.4~0.8m(1~3ft)

[50S] ■Length/50mm(2"n) ■Weight/4.5g(1/8oz) ■Type/Sinking(Fixed Weight)  
■Hook/#10 ■Ring/Line Eye#1-Hook Eye#1 ■Range/0.4~0.8m(1~3ft)

[70S] ■Length/70mm(2-3/4"n) ■Weight/9g(1/3oz) ■Type/Sinking(Fixed Weight)  
■Hook/#6 ■Ring/Line Eye#2-Hook Eye#2 ■Range/0.6~1.0m(2~3ft)

NEW PRODUCT RELEASE - MARCH 2017

Trout legend with new gear!

The "Ryuki Single Limited" series will be released in a range of five colors hand-picked by Fukushi-san, designer behind D3 brand, a legend in Hokkaido. DUO has already worked together with D3 on Gambrel spoon and this time besides the color range, we have together developed "D3 Balancer" single hook. The concept of the hook was to provide the a balance similar to that of a treble hook, so we put an extra focus on the weight. The single hooks will also be sold separately in three sizes - #10, #8 and #6.



# SPEARHEAD RYUKI 45S / 60S / 80S / 95S WT SW LIMITED

NEW PRODUCT

[45S] ■Length/45mm(1-3/4"n) ■Weight/4g(1/8oz) ■Type/Sinking(Fixed Weight)  
■Hook/#12 ■Ring/Line Eye#1-Hook Eye#1 ■Range/0.4~0.6m(1~2ft)

[80S] ■Length/80mm(3-1/8"n) ■Weight/12g(3/8oz) ■Type/Sinking(Fixed Weight)  
■Hook/#8 ■Ring/Line Eye#2-Hook Eye#2 ■Range/0.7~1.2m(2~4ft)

[60S] ■Length/60mm(2-1/8"n) ■Weight/6.5g(1/4oz) ■Type/Sinking(Fixed Weight)  
■Hook/#10 ■Ring/Line Eye#1-Hook Eye#1 ■Range/0.4~0.8m(1~3ft)

[95S] ■Length/95mm(3-5/8"n) ■Weight/17g(5/8oz) ■Type/Sinking(Fixed Weight)  
■Hook/#6 ■Ring/Line Eye#3-Hook Eye#3 ■Range/1.0~1.4m(3~4ft)

NEW PRODUCT RELEASE - 45S/60S SW: MARCH 2017, 80S/95S SW: AVAILABLE NOW

Ryuki's saltwater takeover continues

Ryuki is continuing to build a strong reputation and has become another iconic lure for DUO being recognized as lethal, no matter what type of fishing. Last year we have started more focused push of Ryuki into saltwater fishing and this year we will be expanding the series and besides 80S, there will be three additional Ryuki SW sizes including a special weight tune model of 95S.



● Nature Design

Micro World & Trout  
**ACTUAL SIZE**



**ValkelN**  
Fishing Gear  
Factory

The "Ultimate Reproducibility"

The targets under the water are forever adapting to their environment and avoiding our various techniques to try to catch them. We are forever trying new and innovative approaches and materializing our ideals.

That is the "Ultimate Reproducibility".

The ingenious style of ValkelN will lead you to new grounds.

We do not need a sense of security from simple results.

We have broken free of the stereotypes through our multilateral creativity.

The challenges towards new situations give us excitement and inspiration.

This is the true ValkelN style.

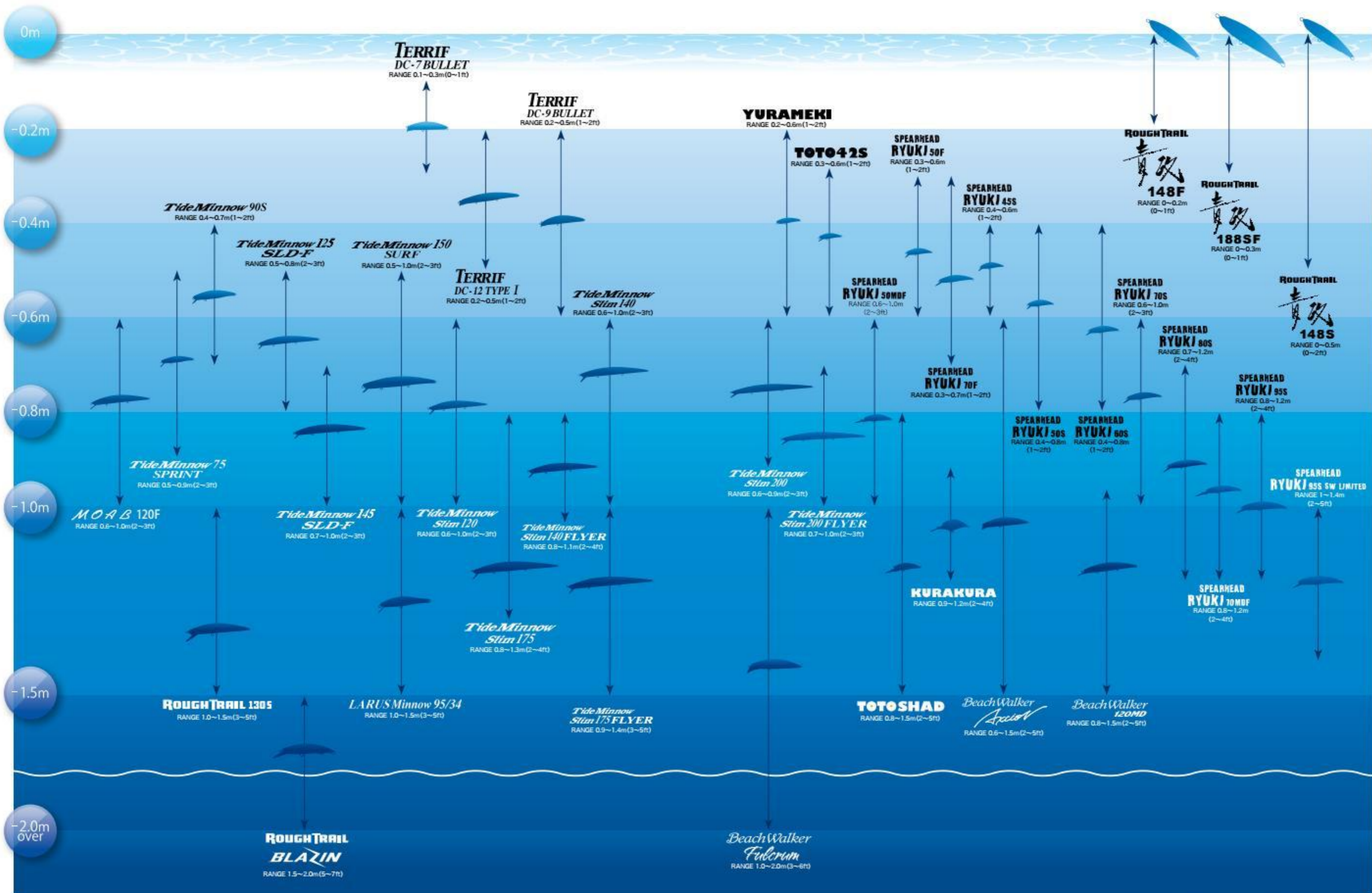


Pro Angler &  
ValkelN Representative Director

菊地 栄一  
Eiichi KIKUCHI

OTHER  
MICRO WORLD & TROUT ACTUAL SIZE

OTHER  
VALKEIN



# LURE DEPTH CHART

The depth of the lure might vary depending on conditions. Please use the depth chart as a general guide.

FANG OPS



Kazuhiro Uyama  
Gang Lei  
Mick Hasset  
Alex Rios  
Takeshi Enokura  
Takahiro Sugata  
Teddy Nugroho Pamungkas  
"Tranman" Ng Yam Pin

PRO STAFF JAPAN



Mline



Hajime Murata  
村田 基

G-Fix



Takashi Nishijima  
西島 高志

USA



Roy Hawk / US Open Champion  
Greg Gutierrez / FLW Champion  
David Williams / BASS Elite Series Angler  
Jason Kincannon / FLW Series Pro  
Dave Reault / TBF President / Jerkbait Legend  
Wayne Macklin / BASS / FLW Pro  
Mike Stiles / Trophy Hunter  
Chris Jackson / Professional Guide

Grade A



JUNICHI AIBA  
相羽 純一  
FUMIKAZU NAGATO  
長戸 郁和

REALIS



KEI TAKEHISA  
武久 圭  
HITOSHI FURUKAWA  
古川 仁志  
YUSUKE HASHIMOTO  
橋本 裕介

EUROPE



Markos Vidalis  
Giuseppe Fantini  
Pep Franco Seguranyes  
Raul Marti Pereira  
Carlos Zamorano  
Christian Biereth  
Rob Stoigis  
Julien Miot  
Darko Pesic  
Zdravko Savar  
Andrius Taujanskas  
DUO Turkey Pro Staff Team

SALTWATER



MITSUYA HOTTA  
堀田 光哉  
TAKASHI TAKAGI  
高木 孝  
MASAMITSU OHIRA  
大平 正満  
MASASHI MATSUMOTO  
松本 仁  
MITSUHIRO AKAGI  
赤木 光広  
HIDEKI OTAKU  
大宅 英樹  
KENJI OGINO  
荻野 憲司  
TAKUYA OHNO  
大野 卓也  
MAKOTO MORIKAWA  
森川 誠  
KYOHEI HARADA  
原田 恭平

ASIA & OCEANIA



Darren Chang  
Scott Whitfield  
Andy Bee

LATIN AMERICA



Rolando Cordoba  
Ezequiel Ramandetto  
Felipe Yueng Garcia

TROUT



MANABU ISHIKAWA  
石川 学  
TOMOYUKI FUKUSHI  
福士 知之

# ORIGINAL ACCESSORIES



**DUO Logo T-Shirt**  
 ■ Size: S · M · L · XL  
 ■ Color: Black

**NEW Realis Logo T-Shirt**  
 ■ Size: S · M · L · XL · XXL  
 ■ Color: Black

T-Shirts Backside



**DUO Logo Hoodie**  
 ■ Size: S · M · L · XL  
 ■ Color: Black



**DUO Flexfit Cap**  
 ■ Size: Free  
 ■ Color: White / Navy · White / Black · Black



**NEW DUO Logo Beanie**  
 ■ Size: Free  
 ■ Color: Grey · Black



**NEW DUO Oneten Snapback**  
 ■ Size: Free  
 ■ Color: Navy / Black

Underside View



**DUO Lure Case**  
 ■ Size: 205 × 145 × 40mm  
 ■ Color: White · Black

**NEW DUO Reversible Lure Case**  
 ■ Size: 86 · 100 · 165



**Cross-Lock Snap**  
 ■ Size: #1 · #2 · #3  
 ■ Quantity: 10pcs

**Split Ring**  
 ■ Size/Quantity: #1/38pcs · 1.5/20pcs · #2/34pcs · #3/24pcs · #4/18pcs · #5/12pcs



**Cover Ring Rod Belt**  
 ■ Size: M · L

**Smart Rod Carrier**  
 ■ Shoulder Strap Length: 750~1300mm

**Rod Belt**  
 ■ Size: 40 × 390mm and 50 × 450mm

Spool Band  
 ■ Size: S · M



**REALIS Logo Cut-Out Sticker**  
 ■ Logo Size: 42 × 140mm  
 ■ Color: White · Red

**DUO Logo Cut-Out Sticker**  
 ■ Logo Size: 165 × 182mm  
 ■ Color: White

**DUO Logo Sticker**  
 ■ Size: 84 × 84mm  
 ■ Color: White



**"There is Only One" Sticker**  
 ■ Size: 148 × 112mm  
 ■ Color: Black · White

**WARNING** ⚠

■ Please do not use for purposes other than fishing. ■ Please keep out of the reach of children. ■ The hooks are very dangerous. Please use caution.  
 ■ When casting a lure, please be sure to check the safety of the surroundings. ■ When the lure and the package are no longer needed, please dispose responsibly.



**SALES AREA**

Company Name	Sales Area	Website
<b>Europe</b>		
VUK.BG	Bulgaria	www.shop.fishing-tackle.bg
Stream Tackle	Bosnia, Hungary	***
Skorpion DNC	Croatia	www.skorpion-dnc.hr
ZICO CZ	Czech Republic, Slovakia	www.zico.cz
Koder	Denmark	www.koder.dk
Ultimate Fishing	France, Spain	www.ultimate-fishing.fr
SWAT Fishing	Germany, Austria, Holland, Belgium, Luxembourg	www.swat-fishing.com
Anglermania	Greece, Cyprus	www.anglermania.com
T2 Distribution	Italy	www.t2distribution.wordpress.com
Angler's Zone	Lithuania, Latvia, Estonia, Poland	www.anglerszone.eu
Gomak DOOEL	Macedonia (FYROM)	***
Angler's Centre	Malta	www.anglercentre.com
Fish+	Moldova	***
Centar Com	Montenegro	***
ProFisker	Norway	www.profisker.no
Modern Angler	Portugal	www.modern-angler.com
Big Fish	Romania	www.bigfish.ro
Moscanelia	Russia, Belarus	www.moscanelia.ru
Maelstrom Fishing	Serbia	www.maelstromfishing.com
MIGN	Slovenia	***
Fishoom	Switzerland	www.fishoom.ch
Nero Marin	Turkey, Kazakhstan, Turkmenistan, Uzbekistan	www.neromarin.com
IBIS	Ukraine	www.fishing.ibis.net.ua
Lure Heaven	UK, Ireland	www.lureheaven.co.uk
<b>Africa</b>		
DAP Fishing	Algeria	www.dap-fishing.com
Fish 'n' Egypt	Egypt	www.fishnegypt.com
Sunlight Fishing	Mauritius	***
JW Apex	South Africa	***
Anis Abid	Tunisia	***
<b>North America</b>		
DUO International	USA, Canada	www.duo-international.com
<b>Latin America</b>		
Superfish	Brazil	www.superfishing.com.br
Full Pesca	Costa Rica	***
Marinsa	El Salvador	www.marinsa.com.sv
Todo Para El Mar SA de CV	Mexico	***
Todopesca	Peru, Chile, Argentina, Ecuador	www.todopescashop.com
<b>Asia &amp; Oceania</b>		
DUO International	Australia, New Zealand	www.duo-international.com
Captain Fred Fishing	Brunei	www.fredfishing.com
Gypsy Anglers	India	***
TTG Fishing	Indonesia	***
Fish 'n' Fun	Israel	www.fish-n-lun.co.il
Free Dive Zone	Lebanon	***
D Blue	Maldives	***
Nomad Fishing Club	Mongolia	***
Malama Enterprises	Papua New Guinea	***
Ilish Pro Shop	Philippines	***
Lunker	Republic of Korea	www.lunkermail.com
Tackle Source	Singapore, Malaysia	***
Smart & Choice	Taiwan, China, Vietnam	www.duo-lure.com.tw
Akan Tackle	Thailand	www.akantackle.com
Titanic International Marine	United Arab Emirates, Saudi Arabia, Bahrain, Kuwait, Oman, Qatar	***

The DUO Concept  
Total Package

## Part 2

# Production

Each of the DUO lures combines advanced technology with the human touch; the attention to detail is combined with the preciseness of the machine and each lure carries the fingerprints of tens of people's hands it goes through during the production process.

From the very first idea, the very first draft up to the sealing of the package, DUO always set out on a mission to push the levels of creativity, set the new standard and provide a perfect tool.

"The Total Package" concept has been the philosophy of DUO since its foundation and the foundation which it was built on was never compromised.

"Total Package" means unifying all the processes under one roof, without any outsourcing, being able to offer you product of higher quality, each with its own identity, carefully quality checked at a better value.

It means paying attention to every little detail of the lures, unifying both the form and function into a perfect unity.



### 1 Assembly

After the ABS body forms are created, internal componentry is strategically placed. This includes special alloy ballast, line ties, special hooks, reflection plates, and acoustics. The bodies are then prepared for adhesion.

### 2 Fusion

Unlike popular cost-saving bonding done by popular companies, DUO utilizes a detailed time intensive process called "Fusing". MEK chemical fusing is accomplished by micro fusion, which actually melts body seams together creating a stronger and water-tight unit. The bonded units are then placed in curing pin to complete a strong unitized form.

### 3 Precision Deburring

After fusion process, the bonded body halves produce an excess in the welds called burrs. Edge finishing and precision deburring process reduces the lures rough mated area to smooth surface.

### 4 Water Intrusion Test

To test the integrity of the adhesion, lures are water tested, immersed into hot water exceeding 70 degrees for around 20 seconds. The hot water makes the air expand within lure cavity and imperfection are detected quickly. For example leakages are identified when bubbles are produced and thereby can be rectified immediately.

### 5 Multi-Step Painting

DUO painting is accomplished manually, one step, one layer at a time. The complexity of coating is also time intensive and expensive, but necessary. DUO's staff will coat a lure between 5 to 15 layers of paint depending on the lure and its tasks. There are over 400 variations of colors available in the catalogue. The lips of the lure are covered so they do not get affected by coloring.

### 6 Masking

Specifically scaled templates are engineered to create tight and consistent tolerances in applying colors and patterns of colors; for example yamame spots or bluegill stripes. These masking templates can obtain intricate or simple patterns that can incorporate multiple colors if necessary.

### 7 Eyes Insertion

Nothing is missed - even DUO's eyes are three-dimensional and carry multiple color bleeds. The detailed eyes are attached by hand after an approved quality control inspection of the lure body.

### 8 Top Coat & Quality Control

After an additional quality control inspection has been completed, a measured clear coat is added to protect the integrity of the paint. The lures pass through multiple layers of clear coat application. Once inspection is completed, the lure's name is printed and sent to packaging for distribution.



The DUO Concept  
Total Package

## Part 3

# Global Coverage

At the beginning of the year 2015 DUO has adopted "International" as part of its brand name and it is indeed the word that best characterizes the last five years at DUO. More than just a name, it signifies DUO's mission to become the global standard for quality within the lure industry.

Since many years ago, DUO was known as one of Japan's premier companies, an honour we continue to embrace. But DUO's lure innovation and ability to stretch boundaries grew. Our concepts and outcomes in lure advancement resonated with the experienced angling-ship across the globe ever since we adopted our new global strategy in 2011.

As we fast-forward to present day, DUO's technology and brand has been pursued by 77-countries globally, a true testament to DUO's tireless development and innovation. Transcending into new markets has been exciting. It brought our lures to many far and distant places, enhancing the angler's experience and expertise.

Due to this newfound platform, the company's research and development teams decided to explore additional frontiers, opening their lure range and technical versatility to pursue a wider range of freshwater and saltwater species, proving again its commitment to the "total package" concept of offering a complete range of products.

"DUO International" is only in its infancy. With an exciting future, its technology will exude innovation of the highest level and continue to spread "Nippon Quality" across the globe.

### Sales Area

<b>EUROPE</b>	Austria	Estonia	Luxembourg	Russia	<b>NORTH AMERICA</b>	Canada	<b>LATIN AMERICA</b>	Argentina	<b>AFRICA</b>	Algeria	<b>ASIA &amp; OCEANIA</b>	Australia	Korea	Philippines
	Belarus	France	Macedonia	Serbia		USA		Brazil		Egypt		Bahrain	Kuwait	Qatar
	Belgium	Germany	Malta	Slovenia				Chile		Mauritius		Brunei	Lebanon	Saudi Arabia
	Bosnia	Greece	Moldova	Slovakia				Costa Rica		South Africa		China	Malaysia	Singapore
	Bulgaria	Holland	Montenegro	Spain				Ecuador		Tunisia		Egypt	Maldives	Taiwan
	Croatia	Ireland	Norway	Switzerland				El Salvador				India	Mongolia	Thailand
	Cyprus	Italy	Poland	Turkey				Mexico				Indonesia	New Zealand	United Arab Emirates
	Czech Republic	Latvia	Portugal	UK				Peru				Israel	Oman	Vietnam
	Denmark	Lithuania	Romania	Ukraine								Japan	Papua New Guinea	

DUO  
International

**REALIS***All-Purpose Brand*

The all-mighty brand collecting under its umbrella lures able to tame the beasts in Papua New Guinea through the legendary Biwako bass all the way to saltwaters roaming species.

The growing Realis line-up is set to forge the new standard for decades to come.

**REALIS**

## GOING BEAST MODE

Utilizing DUO's highly advanced molding technology, the lure designs were headed by DUO CEO and Chief designer Masahiro Adachi in close collaboration with One Bite One Fishe's Kazuhiro Uyama, a predator fishing icon, who provided invaluable insight based on his vast global experience and know-how.

Contrary to the notion of JDM (Japanese Domestic Model) being associated with finesse usage, Fang Ops lures were created specifically for daring anglers around the world with a toughness and durability that could match any monster anytime, anywhere.

Keeping true to DUO's motto "There is Only One", the standard-setting Realis Fang Ops lures will be a must-have for the predator angler going beast mode.

PRODUCED BY  
MASAHIRO ADACHI & KAZUHIRO UYAMA

# FANG OPS

GOING BEAST MODE

## FANG OPS TROOPS

MEET THE BEAST HUNTERS



**KAZUHIRO UYAMA**

JAPAN

A true fishing globetrotter, "Mr. Fang" Kazuhiro Uyama has tested his skills against the beasts of 14 different countries via his "World Expedition" fishing tour. Kazz has dedicated his life to chasing the freshwater predators and his many memorable trips has also helped him land three world records. Now, he's chasing the fourth one!

**GONG LEI**

CHINA

Known as the "Little Master", fish that Gong Lei chases can be described as anything but little. Starting fishing at the age of 7, Gong quickly found passion for trying to fool the fish to bite his lure. The world stays in awe of his casting and fishing skills which he tests on all kinds of predators ranging from his "trademark" Yellowcheek Carp all the way to giant Papuan Bass.



**MICK HASSETT**

AUSTRALIA

Fang Ops' own "barramundi ambassador", Mick Hassett, is already known to DUO fans via his pro staff position and heavy utilization of our lure range taking great advantage of Australia abundant water species. "The metrey magnet" will be helping to test the Fang lures on some of the most aggressive fish out there.

**ALEX RIOS**

SPAIN

The first Fang Ops member from Europe, Alex Rios has dedicated his life to sportfishing, both for freshwater and saltwater species. He lives for travelling to explore new waters, new species, new challenges. Known for taming varied species ranking from monster pikes and trouts all the way to triple digits weighing giant trevallies and dogtooth tunas.



Discover more at



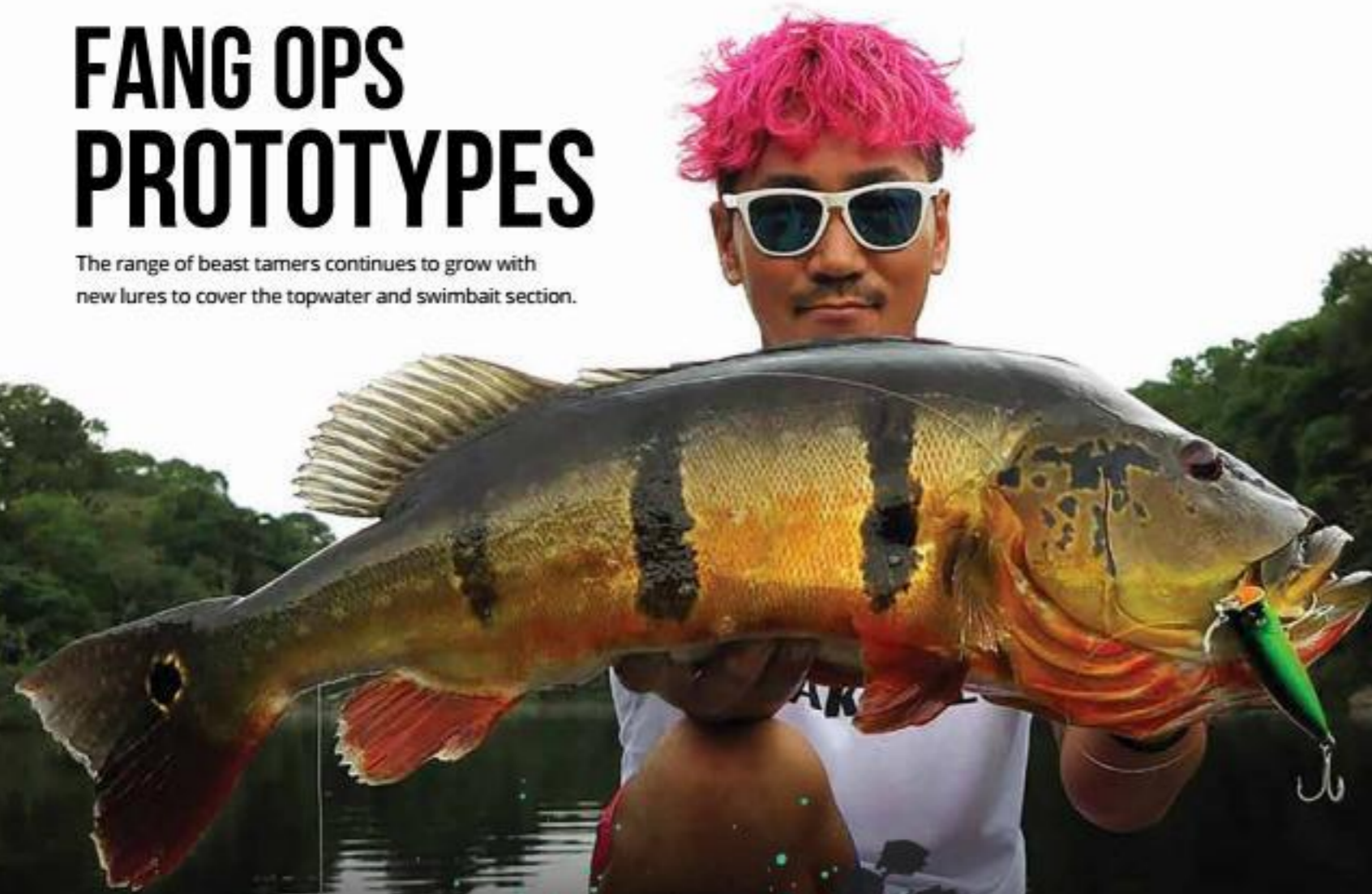
[www.fangops.com](http://www.fangops.com)



[www.facebook.com/FangOps](https://www.facebook.com/FangOps)

# FANG OPS PROTOTYPES

The range of beast tamers continues to grow with new lures to cover the topwater and swimbait section.



## FANGPOP

*Flexible and Tough. The Perfect Surface Weapon!*

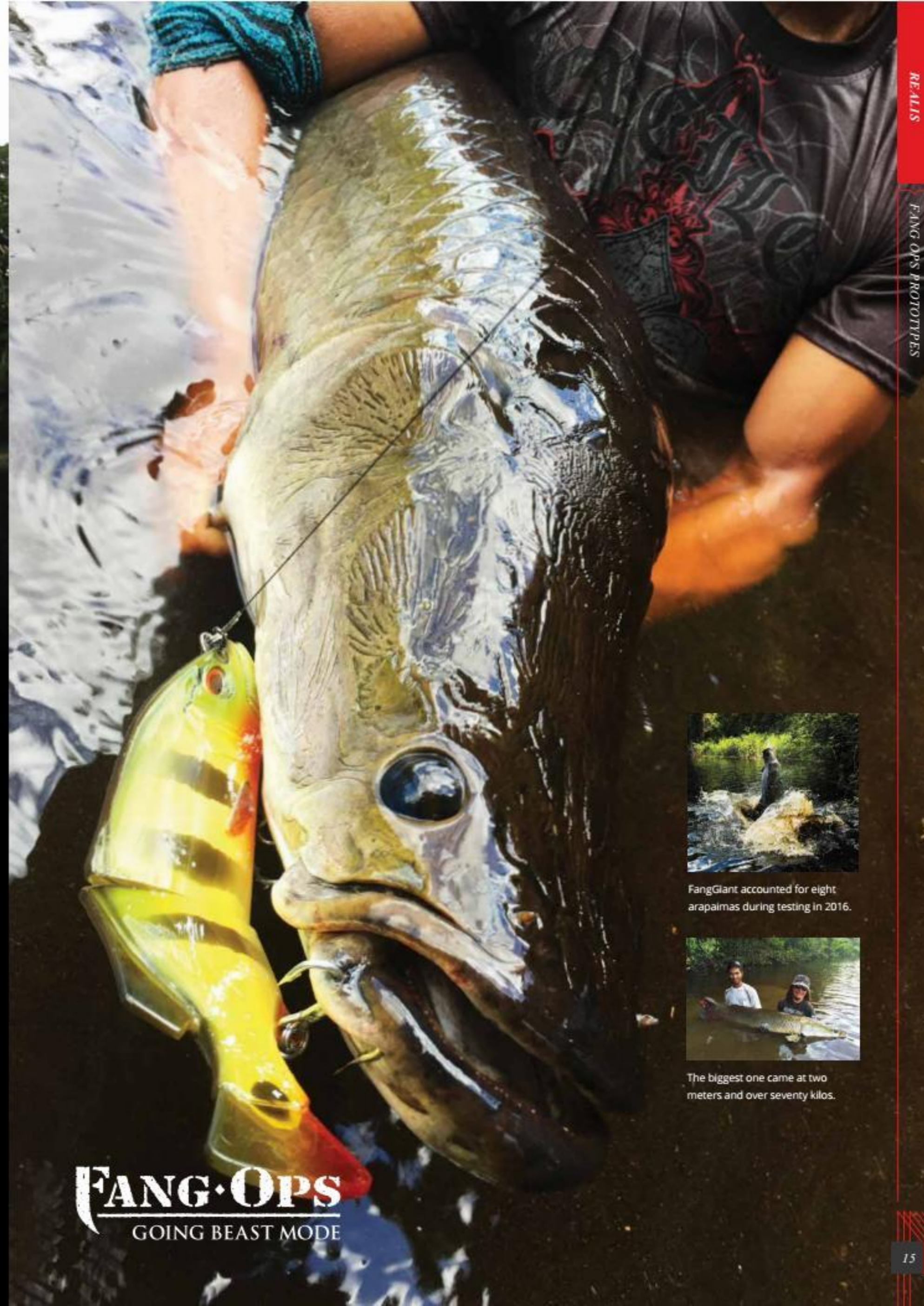
After conquering shallow and deep waters with Fangbaits, Fang Ops is ready to rule the surface too. Introducing FangPop, the new topwater master. Even with light twitching, FangPop splashes the water well accompanied by a sweet pop sound to attract the predators to reach out. Versatile enough to be used for GT-style popping, straight fast retrieve as well as staging a crisp walk the dog, FangPop proves it's all-rounder status. Being fully wired-through at that, it makes it the only one of its kind. Get ready to call the beasts to meet you at the surface.

## FANGGIANT\*

*Enter the Colossus! Only Beasts Allowed!*

When magnum is not enough! While there are number of big baits around the world, this one is not only of monster size, but is ready to handle the monsters. A fully integrated wire system from head all the way to tail makes it ready to tackle any kind of beast. By using an original way to connect the joints, the range of movement of FangGiant was expanded and the swimbait stages an irregular action causing reaction strikes! We have tested the model thoroughly in 2016 landing three trophy sized arapaimas and this is just a beginning - It's time to "go beast mode" on world's largest fish.

\*provisional name



FangGiant accounted for eight arapaimas during testing in 2016.



The biggest one came at two meters and over seventy kilos.

**FANG·OPS**  
GOING BEAST MODE