



2018 CATALOGUE

DUO CUSTOM BAIT

THERE
IS ONLY
ONE

2018 | DUO INTERNATIONAL

2018 | DUO INTERNATIONAL

DUO
International

REALIS FANGBAIT SR/DR EDITIONS

FANGBAIT120SR/140SR

[120SR] ■Length/120mm(4-3/4" in) ■Weight/25.8g(7/8oz) ■Type/Floating(Fixed Weight) ■Hook/#1X
 ■Ring/Hook Eye#5.5 ■Range/0.8~1.0m(2~3ft) ■Price/21\$/19€

[140SR] ■Length/140mm(5-1/2" in) ■Weight/38g(1-3/8oz) ■Type/Floating(Fixed Weight) ■Hook/#1.0X
 ■Ring/Hook Eye#5.5 ■Range/0.8~1.0m(2~3ft) ■Price/23\$/21€

FANGBAIT120DR/140DR

[120DR] ■Length/120mm(4-3/4" in) ■Weight/26.7g(1oz) ■Type/Floating(Magnet Assisted Weight)
 ■Hook/#1X ■Ring/Hook Eye#5.5 ■Range/2~2.8m(6~9ft) ■Price/21\$/19€

[140DR] ■Length/140mm(5-1/2" in) ■Weight/41.2g(1-1/2oz) ■Type/Floating(Magnet Assisted Weight)
 ■Hook/#1.0X ■Ring/Hook Eye#5.5 ■Range/2.7~3.4m(9~12ft) ■Price/23\$/21€



FANG·OPS
GOING BEAST MODE

The heavy duty weapon for "Going Beast Mode"

What do you tie on your rod when you plan to target a 20kg Papuan bass, 40kg barramundi or 100kg arapaima? What tackle generates enough confidence to tie it on even when fighting a world class record fish? We offer you the answer – the Fangbait series. Developed by Kazuhiro Uyama and tested on his many trips to chase the greatest of world's predators, Fangbait aims to become a staple in "beast hunters" tackle boxes. As a pioneering model for Fang Ops brand, it represents the concept of building some of the toughest lures in the world to the fullest.

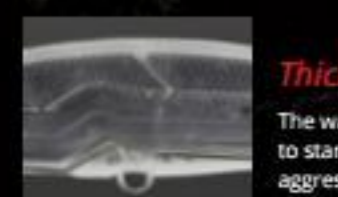


FANGBAIT SERIES

NEW COLOR RELEASE • JULY 2018



Through Wire
 Enhancing the strength of the lures further is a thick wire running through the whole body.



Thickened Walls
 The walls of Fangbaits are thicker by 20% compared to standard to withstand even the largest and most aggressive of fish.

Inner Structure

SR

- **Stainless-steel Pins**
We have inserted 3 different sized stainless-steel pins to secure the wire which runs through the body.
- **Out & Through Wire**
Running the wire through the outer side of the body reduces the plastic used, hence enhancing buoyancy.
- **Hook Eyes**
Oversized hook eyes are able to accommodate heavy duty gear to tackle the largest of the beasts.

DR

- **Lip Construction**
Reinforced lip construction with extra thickness further aids the strength of the lure.
- **Magnet Weight**
The moving weight design of DR model gives it enhanced castability, one of the weak point in deep divers.



REALIS

FANGBAIT SR/DR

LIMITED EDITIONS PIKE / SW

FANGBAIT120SR/140SR PIKE LIMITED

[120SR] ■ Length / 120mm (4-3/4" in) ■ Weight / 25.8g (7/8oz) ■ Type / Floating (Fixed Weight)
 ■ Hook / #1X ■ Ring / Hook Eye #5.5 ■ Range / 0.8~1.0m (2~3ft)

[140SR] ■ Length / 140mm (5-1/2" in) ■ Weight / 38g (1-3/8oz) ■ Type / Floating (Fixed Weight)
 ■ Hook / #1/0X ■ Ring / Hook Eye #5.5 ■ Range / 0.8~1.0m (2~3ft)

NEW COLOR RELEASE • MARCH 2018

Commence "Operation: Esox!" Lock in on pike fangs!



FANGBAIT120DR / 140DR SW LIMITED

[120DR] ■ Length / 120mm (4-3/4" in) ■ Weight / 27.5g (1oz) ■ Type / Floating (Magnet Assisted Weight + Rattle)
 ■ Hook / #1X ■ Ring / Hook Eye #5.5 ■ Range / 2~2.8m (6~9ft)

[140DR] ■ Length / 140mm (5-1/2" in) ■ Weight / 42.1g (1-1/2oz) ■ Type / Floating (Magnet Assisted Weight + Rattle)
 ■ Hook / #1/0X ■ Ring / Hook Eye #5.5 ■ Range / 2.7~3.4m (9~12ft)

NEW COLOR RELEASE • AUGUST 2018

Rattle the bluewaters!
 Dive down to those trophy fish.



● Nature Design

THE BEASTS AWAIT
 PROTOTYPES FOR THE FANG LINE



FANG SHAD TAIL

Soft Bait

FANG STICK

Topwater

FANG GIANT

Swimbait

The range of beast tamers continues to grow with new lure to cover the topwater, swimbait section and start of Fang soft bait revolution.

FANG·OPS
 GOING BEAST MODE

REALIS

Aaron Martens

MEET THE ADACHI AND AARON CONVERGENCE

Looking forward has never been an issue for DUO's team. Looking towards an arena of great minds, great designs to be shared with the expert lure community is an anticipation worth waiting for.



OCTOBER 2017
DEVELOPMENT MEETING AND FIELD TESTING

REALIS V-TAILSHAD 3"/4" NEW PRODUCT

[3"] ■ Length/3" in (76.2mm) ■ Pieces/8 per pack [4"] ■ Length/4" in (93mm) ■ Pieces/7 per pack



Photo Credit | Josiah Nuss

Adaptable shad for multi-rigging and diverse techniques

Our first soft bait in the Realis brand was developed with primary focus on finding the most suited material. Our ultimate goal was "Vitality". The R&D team developed the V-Tail's ballast system by selecting several types of salts with specific density and leeching ratios. It goes without saying that this soft bait will effectively perform the basic action of surface shaking and the mid-range strolling, but can also enact the subtle natural movement in the tail at the moment it hits the bottom in the deep zone. Carefully created unique, pliable profile with a quiver, dart action will replicate a lively bait in various conditions and eliminate the fish's hesitation to eat the lure.



Multibait Tail Design

One of secrets of V-Tail versatility is the originally designed tail which creates a baitfish like movement while swimming, imitating various bait in other areas too, f.e. replicating crustacean when at the bottom.

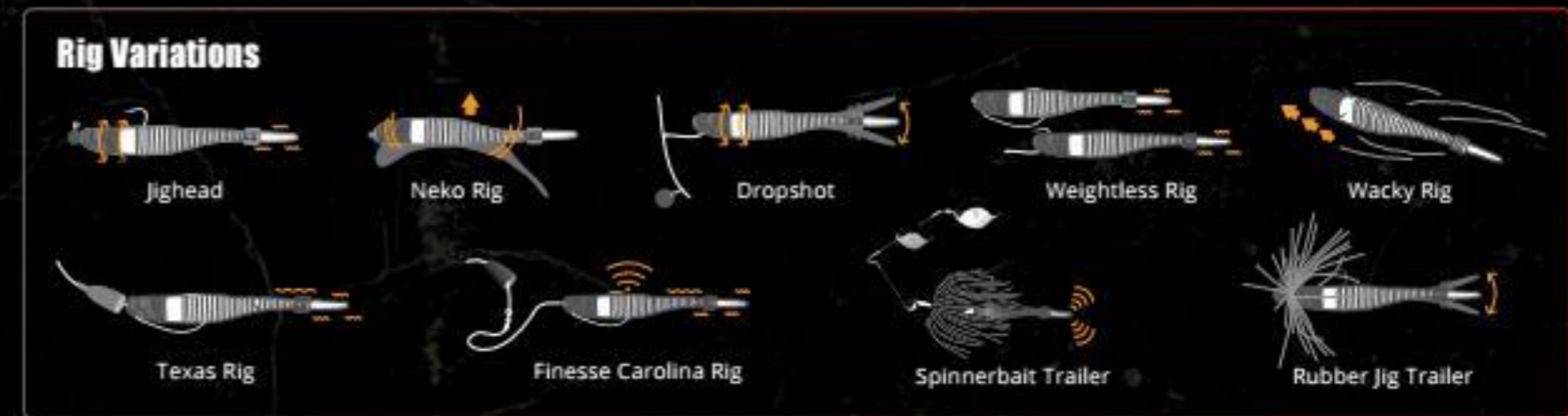


SECTIONAL VIEW

A Concave Design

The large concave design in the back section will not only control the rising and sliding of the bait during shaking, but also efficiently transfer a realistic pulsation towards the tail section.

V-TAILSHAD 3"/4" NEW



REALIS

PENCIL130

NEW
PRODUCT

■ Length / 130mm (5-1/8" in) ■ Weight / 31.6g (1-1/8oz) ■ Type / Floating (Moving Weight) ■ Hook / #1X ■ Ring / #4

Unrivaled performance packed in hawg caller

Realis is finally introducing the long demanded up-sized Pencil 130. A large top water bait built for abuse and complete warfare. No stealth approach needed unless desired. Pencil 130 is a home wrecker - invasive, loud and more disruptive than an EDM concert. Designed with a powerful glide that displaces more water than a war ship, the hawg caller has a draw-effect that impressed even the R&D staff during the first series of tests. Its buoyancy is well distributed and the lure allows several hook size changes if necessary.

It carries the signature of the world famous lure designer Mr. Adachi - the aerodynamic body houses a sphere on the chin of the lure, which makes walk the dog action effortless and also forces the lure to roll, flashing its gill plate. Don't be fooled, the robust size did not negate its ability to be retrieved, in many ways offering a longer quieter glide when necessary. It is genetically gifted to call and catch big fish.



NEW COLOR RELEASE • MAY 2018

PENCIL130



NEW COLOR RELEASE • MAY 2018

PENCIL130 SW LIMITED



Inner Structure

Aerodynamic design reduces air resistance allowing a stable flight posture

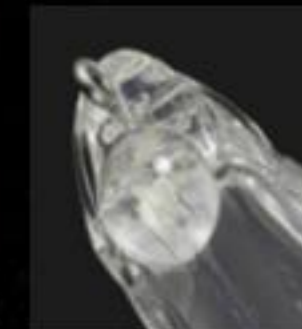
Reinforced wall construction for excellent durability

Two moving steel bearings create vibrant sound

Positioning of the tail hook-eye minimizes influence of cross winds

The Swing Design

The protruding spherical shape on the chin of the lure creates easy "dog-walking" action.



真虫 SHINMUSHI



Detachable Body

By removing the hook eyes, anglers will be able to separate the body to customize the lure depending on the given situation.



Wings

The wings were designed as a fixed feature instead of a free moving wing, for its function as a stopper. It also enables to the lure stage a "freestyle" action while retrieving.

REALIS KOSHINMUSHI NEW PRODUCT

■Length/30mm(1-1/8") ■Weight/3.1g(1/8oz) ■Type/Floating(Fixed Weight) ■Hook/#12 ■Ring/#1

NEW PRODUCT RELEASE • MAY 2018

For selective situations when fish only have their eyes on small beetles

For fish on a fussy diet who are feeding on small beetles, there are situations where they won't use their mouths due to the volume of the Shinmushi. The Koshinmushi is a downsized model to visually motivate those picky eaters. After redesigning the thickness of the body, we were able to realize that unique sound of a beetle touching down on the surface. As the downsizing of the body will reduce its ability to appeal to a vast area, we installed a rattle sound.



ACTUAL SIZE



REALIS SHINMUSHI

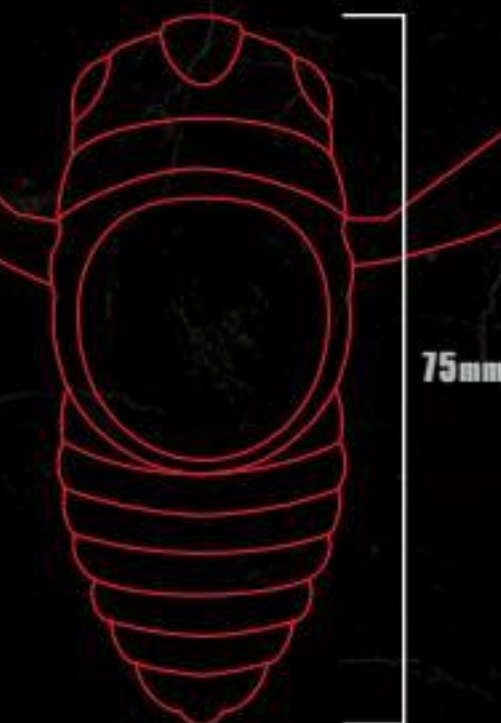
■Length/40mm(1-5/8") ■Weight/5.7g(1/5oz) ■Type/Floating(Fixed Weight) ■Hook/#10 ■Ring/#1.5

NEW COLOR RELEASE • APRIL 2018

The ultimate cicada lure packing the highest level of customization

The Realis Shinmushi has incorporated the actions of a "hard" body and "soft" rubber legs, creating a 3 dimensional pulsation that calls fish to surface. This cicada imitation will induce bites with its silhouette and pulsation affect and will automatically induce bites while moving or just resting on the water.

ACTUAL SIZE



REALIS DEKASHINMUSHI NEW PRODUCT

■Length/75mm(3") ■Weight/29g(TBO)(1oz) ■Type/Floating(Fixed Weight) ■Hook/#4 ■Ring/#3

NEW PRODUCT RELEASE • JUNE 2018

Magnum crawler with a cicada DNA

The XXL version of the Shinmushi series comes crashing in a big way. Built to move a lot of water, it allows to trigger fish which can not be caught on regular topwater lures. By shaking it like an insect, it produces a big ripple on the surface calling the fish from far. Thanks to soft wings the crawling action is easy to initiate making Dekashinmushi supremely user-friendly surface crawler, which is just as fun to fish.

SHINMUSHI SERIES



ACC3204 Aburazemi



ACC3213 Suzumebachi



ACC3216 Joro Spider



CCC3201 Tsukitakuhoushi



CCC3202 Haruzemi



CCC3203 Serrigara



CCC3218 Kinkame



CCC3219 Beetle



CCC3233 Sunset Moth NEW



CCC3239 Sight Bug NEW

REALIS SPIN

NEW
PRODUCT

[5g] ■Length/30mm(1-1/8") ■Weight/5g(1/4oz) ■Type/Sinking(Fixed Weight)
■Hook/#14 ■Ring/Line Eye→Hook Eye#1

[7g] ■Length/35mm(1-3/8") ■Weight/7g(1/4oz) ■Type/Sinking(Fixed Weight)
■Hook/#14 ■Ring/Line Eye→Hook Eye#1

Conquer the field! A tail-spin type lure is ready to stimulate the natural instincts of the fish

Fishing land based or from the boat, a new tail-spin type lure is ready to search a vast area. The compact body size enables the lure to travel great distances when casting. Its classical spin-tail creates a smooth rotation while the weak rolling of the body stimulates a natural bite from the bass. The lure produces a lively pulsation of a bait while maintaining an appropriate drag for a more linear usage. It is loaded with two hooks to effectively capitalize on the short bites of the tough conditions in cold conditions.

REALIS SPIN

NEW PRODUCT RELEASE - APRIL 2018



REALIS ONIMASU188F/188S

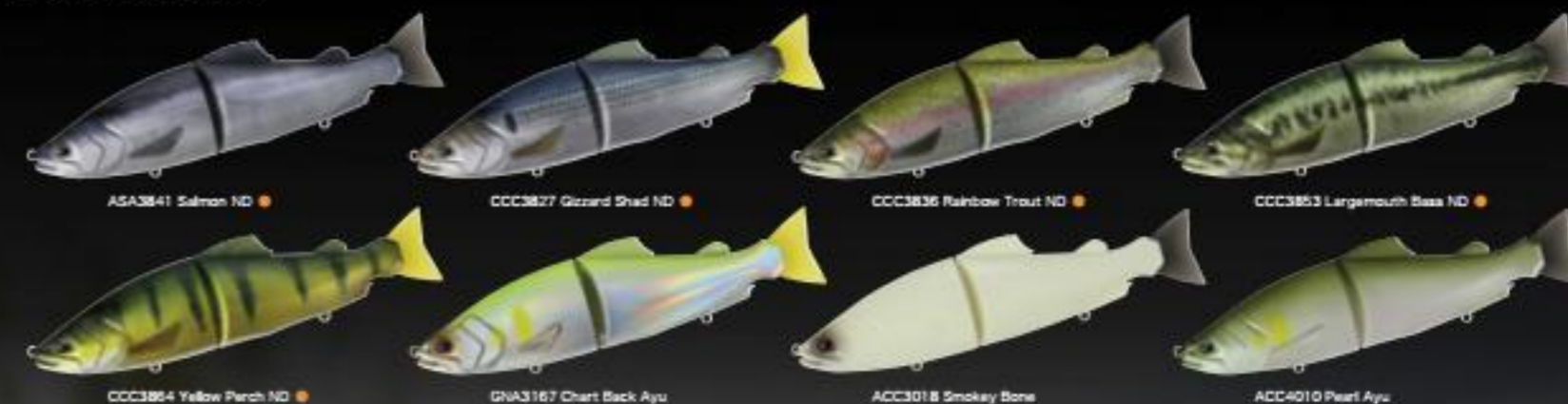
[188F] ■Length/188mm(7-2/5") ■Weight/75g(2-3/4oz) ■Type/Slow Rise Floatation(Fixed Weight)
■Hook/#1/0X ■Ring/Hook Eye#4 ■Range/0.2~0.6m(0~2ft)

[188S] ■Length/188mm(7-2/5") ■Weight/78g(2-3/4oz) ■Type/Sinking(Fixed Weight)
■Hook/#1/0X ■Ring/Hook Eye#4 ■Range/0.4~0.8m(1~3ft)

**Pioneer of the Prometheus Project
- Taking realism to a new level**

The Prometheus Project began in 2013. Famed lure designer, Mr. Adachi, desired a unique platform which could accompany his design expertise and intricate understanding of lure actions, fusing them together with his advanced high resolution imaging and painting technology. The finished product is awe inspiring and shockingly realistic. The focus on this lure was to acquire a true S-curve motion distinctly different from saturated actions being depicted in the industry. This lure's vector (course of travel) is influenced by the lure's unique profile and fore-region. Its fluxion (or velocity) is dictated by line tension and reel retrieve. It is versatile with the intention of offering the swim motion through a variety of retrieves.

ONIMASU188





SPY BAITING

TECHNIQUE OF SILENT CAPTURE



REALIS SPINBAIT80/90/80 G-Fix

SPINBAIT80

Length/80mm(3-1/8") Weight/9.5g(3/8oz) Type/Sinking(Fixed Weight)
Hook/#8X Ring/Hook Eye#2 Range/2.0~3.5m~(7~12ft~)

NEW COLOR RELEASE • AVAILABLE NOW



The vehicle for the world's fastest growing finesse technique

The "Spybaiting" technique is considered an ultra-finesse hard bait technique requiring light line, long casts and in-line retrieves. Manipulation of the technique requires concentration and steady slow retrieves. But the results are mind altering. It is a finesse technique that catches big fish as well as numbers. It has recently hit the global shores and has been proven effective on a wide range of fish, both freshwater and saltwater. The lure designed for this technique is the Realis Spinbait. DUO invites you to become familiar with the deadly finesse presentation known as "Spybaiting", the technique of silent capture.



Discover more at www.spybaiting.com

SPINBAIT90

Length/90mm(3-1/2") Weight/15g(1/2oz) Type/Sinking(Fixed Weight)
Hook/#6X Ring/Hook Eye#2 Range/2.5~5.0m~(8~17ft~)

NEW COLOR RELEASE • AVAILABLE NOW



SPINBAIT80 G-Fix

Length/80mm(3-1/8") Weight/10.5g(3/8oz) Type/Sinking(Fixed Weight)
Hook/#8X Ring/Hook Eye#2 Range/3.0~5.5m~(10~18ft~)

NEW COLOR RELEASE • AVAILABLE NOW



GREAT LAKES LIMITED COLOR SERIES

SPINBAIT80 G-Fix

NEW COLOR RELEASE • AVAILABLE NOW



REALIS

JERKBAIT 100DR / 100SP 110SP / 120F

The new JDM jerkbait/ripbait standard

How do you know if you have a great jerkbait? What characteristics stand at the forefront? Professional anglers will tell you casting distance, balance, darting and flash are key considerations. Realis Jerkbait is a composition of desired traits and much more.

Realis Jerkbait line-up has the best of all worlds - balanced retrieve, specific body rotation to give off a pronounced wobble and precise gait during lure's tack-movement. The taller, flatter sides of the lure provide a larger profile, giving an impression a bigger baitfish and provide wider band of flashing to improve detection of the lure at a distance.

The multiple actions and versatility are capable in the series due to high-end componentry hidden in its durable frame structure. DUO has truly went beyond the angler's desire when it comes to refined jerkbait fishing.



JERKBAIT 100DR

■Length / 100mm (3-7/8" In) ■Weight / 15.6g (1/2oz) ■Type / Suspending (Magnet Assisted Weight)
■Hook / #4X ■Ring / Line Eye#3 - Hook Eye#2 ■Range / 1.8~3.0m (6~10ft)



JERKBAIT 100SP

■Length / 100mm (3-7/8" In) ■Weight / 14.5g (1/2oz) ■Type / Suspending (Fixed Weight)
■Hook / #5 ■Ring / Line Eye#2 - Hook Eye#2 ■Range / 0.8~1.5m (2~5ft)



JERKBAIT 110SP

■Length / 110mm (4-3/8" In) ■Weight / 16.2g (5/8oz) ■Type / Suspending (Moving Weight)
■Hook / #5X ■Ring / Line Eye#3 - Hook Eye#3 ■Range / 0.8~1.5m (2~6ft)



JERKBAIT 120F

■Length / 120mm (4-3/4" In) ■Weight / 17.1g (5/8oz) ■Type / Floating
■Hook / #5X ■Ring / Line Eye#2 - Hook Eye#2 ■Range / 0.8~1.0m (2~3ft)



REALIS JERKBAIT 120SP

The flagship of Realis jerkbaits

Being known for its versatility to cover water quickly or to be target orientated on the go, has made the Realis Jerkbait 120 a super tool among big bait users.



JERKBAIT 120SP

Length / 120mm (4-3/4" in) Weight / 18g (5/8oz) Type / Suspending (Moving Weight)
Hook / #5X Ring / Line Eye #3 - Hook Eye #2 Range / 1.0 ~ 1.5m (3 ~ 6ft)

NEW COLOR RELEASE • MARCH 2018



GREAT LAKES LIMITED SERIES

JERKBAIT 110SP / 120SP

NEW COLOR RELEASE • MARCH 2018



REALIS X Aaron Martens

JERKBAIT 100SP / 110SP / 120SP

Aaron Martens Signature Colors

NEW COLOR RELEASE • AVAILABLE NOW

Considered by many to be one of the greatest Elite anglers of all time, Aaron Martens has dazzled the world with his innate and natural ability to catch bass in any condition. It was also the Realis Jerkbait line-up which quietly aided Aaron to continue his success, and therefore the first set of colors to be unveiled with his "signature".



REALIS JERKBAIT 100SP / 120SP LIMITED EDITIONS SW / PIKE

JERKBAIT 100SP / 120SP PIKE LIMITED

Gearing up for Esoc sessions

[100SP] Length / 100mm (3-7/8" in) Weight / 14.5g (1/2oz)
Type / Suspending (Fixed Weight) Hook / #4X
Ring / Line Eye #3 - Hook Eye #3 Range / 0.8 ~ 1.5m (2 ~ 5ft)

[120SP] Length / 120mm (4-3/4" in) Weight / 17.8g (5/8oz)
Type / Suspending (Moving Weight) Hook / #3X
Ring / Line Eye #3 - Hook Eye #3 Range / 1.3 ~ 1.8m (4 ~ 6ft)

The new Pike Limited range is aimed at the iconic toothy predator and comes ready for battle - geared up with two heavy duty hooks and clothed in some of the most common pike baitfish patterns, it's ready to cause even more havoc on one of the world's finest water menace.



JERKBAIT 120SP SW LIMITED

Saltwater version for unlimited salt life

Length / 120mm (4-3/4" in) Weight / 18.2g (5/8oz) Type / Suspending (Moving Weight)
Hook / #5X TIN Ring / Line Eye #3 - Hook Eye #3 Range / 1.0 ~ 1.8m (3 ~ 6ft)

NEW COLOR RELEASE • APRIL 2018

The iconic jerkbait has now been adjusted for saltwater sessions with some of the most popular colors from Tide Minnow range and some unique patterns added to top it off to further enhance reputation of this cult lure also for shore and off-shore fishing.



CONCEPT

02. MASAHIRO ADACHI

04. DESIGN & DEVELOPMENT

06. OUR COMMITMENT TO NIPPON QUALITY

08. NEW RELEASE 2018

REALIS

All-Purpose Brand

- 10 REALIS CONCEPT
- 12 REALIS FANG OPS CONCEPT
- 14 REALIS FANGPOP 105/120 **NEW**
- 16 REALIS FANGBAIT SR/DR
- 18 REALIS FANGBAIT PIKE/SW LIMITED
- 19 REALIS FANG OPS PROTOTYPES **NEW**
- 20 REALIS X AARON MARTENS COLLAB **NEW**
- 22 REALIS V-TAILSHAD 3"1/4" **NEW**
- 24 REALIS PENCIL 130 **NEW**
- 26 REALIS SHINMUSHI SERIES **NEW**
- 28 REALIS SPIN **NEW**
- 29 REALIS ONIMASU 188F/188S
- 30 REALIS SPINBAIT 80/90/80 G-Fix
- 32 REALIS JERKBAIT 100DR/100SP/110SP/120F
- 34 REALIS JERKBAIT 120SP
- 35 REALIS JERKBAIT SW/PIKE
- 36 REALIS CRANK M62 5A / M65 8A • 11A
- 37 REALIS CRANK G87 15A/20A
- 38 REALIS PENCIL 85/110
- 39 REALIS PENCIL 110 WT (SW LIMITED)
- 40 REALIS POPPER64
- REALIS PENCILPOPPER 110 /148 / SW
- 41 REALIS ROZANTE 63SP/77SP
- REALIS MINNOW 80SP
- 42 REALIS SHAD 52MR/59MR/62DR
- 43 REALIS VIBRATION 62/68/68 G-Fix
- 44 REALIS DEPTH CHART
- 46 REALIS ACTUAL SIZE

SALTWATER

Shore / Off-shore / Micro World

- 48 SALTWATER CONCEPT
- 50 TideMinnow Slim Fortified Lip **NEW**
- 51 TideMinnow Slim 140/175/200
- 52 TideMinnow Slim 140/175/200 FLYER
- 53 TideMinnow Slim ND LIMITED **NEW**
- TideMinnow Slim RED TAILS LIMITED **NEW**
- 54 TideMinnow Series Renewal **NEW**
- TideMinnow 120/135 SURF
- 55 TideMinnow 125/145 SLD-F/S
- TideMinnow 120LD
- TideMinnow Lipless Slim
- TideMinnow 150 SURF
- 56 TideMinnow 75 SPRINT
- TERRIF DC-9/DC-12 TYPE 1
- MOAB120F
- 57 BeachWalker Afraid **NEW**
- 58 BeachWalker Revolt **NEW**
- BeachWalker Haul Head/Shad
- BeachWalker Flipper
- 59 BeachWalker Fulcrum
- BeachWalker Axcion
- BeachWalker 120MD
- 60 BayRUF MANIC155 / FISH88/99 **NEW**
- 61 DEPRIVE **NEW**
- 62 SHORE FISHING ACTUAL SIZE
-
- 64 ROUGHTRAIL PROTOTYPES **NEW**
- 66 ROUGHTRAIL BLAZIN SERIES **NEW**
- ROUGHTRAIL 130S
- 67 ROUGHTRAIL Aomasa148F/148S/188SF
- 68 PressBait 85
- PressBait 125HD
- PressBait SAIRA
- 69 D-SQUID
- TideVib SCORE 78
- TideVib SCORE 100
- 70 OFF-SHORE FISHING ACTUAL SIZE
-
- 72 DRAGMETAL **NEW**
- 74 TETRAWORKS TETRAJIG **NEW**
- 76 TETRAWORKS YURAPEN **NEW** / FURAFURA **NEW** / SPIN **NEW**
- PERAKKO / TOTO42S / TOTO48HS **NEW**
- 77 TETRAWORKS KURAKURA / POCOPOCO F / IKAKKO
- BIVI / TOTOSHAD / YURAMEKI

SPEARHEAD

The Ryuki Brand

- 78 SPEARHEAD RYUKI CONCEPT
- 80 SPEARHEAD RYUKI 45S/50S/60S/70S
- SPEARHEAD RYUKI 80S
- SPEARHEAD RYUKI 95S/110S **NEW**
- 82 SPEARHEAD RYUKI 50F/70F
- SPEARHEAD RYUKI 50MDF/70MDF
- SPEARHEAD RYUKI M AIRE **NEW**
- 83 SPEARHEAD RYUKI SINGLE LIMITED
- SPEARHEAD RYUKI SW LIMITED

OTHER

- 84 MICRO WORLD & TROUT ACTUAL SIZE
- 86 LURE DEPTH CHART
- 88 DUO PRO STAFF
- 90 ORIGINAL ACCESSORIES
- 93 GLOBAL DISTRIBUTORS

CRAFTED, THE ARTISAN WAY.

DUO INTERNATIONAL

REALIS CRANK M62 5A · M65 8A / 11A

The M-Line Series is the epitome of all terrain mobility, balance and recovery.

REALIS *HAJIME MURATA*



CRANK M62 5A

- Length/62mm(2-1/2" in) ■ Weight/14.3g(1/2oz)
- Type/Floating(Magnet Assisted Weight) ■ Hook/#5X
- Ring/Line Eye#2-Hook Eye#2 ■ Range/1.2~1.8m(4~6ft)

M62 5A has an advanced weight transfer system to ensure accurate placement and great wobble with very balanced-running action.



CRANK M65 8A

- Length/65mm(2-1/2" in) ■ Weight/14g(1/2oz) ■ Type/Floating(Fixed Weight) ■ Hook/#4X
- Ring/Line Eye#3-Hook Eye#3 ■ Range/2.0~2.5m(7~9ft)

Mid-diving M65 8A's sharp diving angle helps it reach it depth promptly and carefully tapered lip makes it run true and avoid obstacles.



CRANK M65 11A

- Length/65mm(2-1/2" in) ■ Weight/16g(5/8oz) ■ Type/Floating(Fixed Weight)
- Hook/#4X ■ Ring/Line Eye#3-Hook Eye#3 ■ Range/2.5~3.5m(10~12ft)

NEW COLOR RELEASE · APRIL 2018

Both M65 crankbaits were loaded with performance but it is the complete package - integrity, castability, refined action and unique sound - offered in this series that is going to give the angler an advantage. You may be able to ascertain why the M65 was a five year project. There is no crankbait like it.



"It's not only the longest casting, most accurate deep crankbait for its size. It dives better, is more versatile as well the most consistent deep crank I have ever used."

— AARON MARTENS

Aaron Martens



REALIS CRANK G87 15A / 20A

- [15A] Length/87mm(3-1/3" in) ■ Weight/34.0g(1-1/4oz) ■ Type/Floating(Magnet Assisted Weight) ■ Hook/#2X
- Ring/Line Eye#4-Hook Eye#4 ■ Range/4.2~5.2m(14~16ft~)

- [20A] Length/87mm(3-1/3" in) ■ Weight/35.5g(1-1/4oz) ■ Type/Floating(Magnet Assisted Weight)
- Hook/#2X ■ Ring/Line Eye#4-Hook Eye#4 ■ Range/5.5~6.3m(19~21ft~)

To set yourself apart from the herd in the crankbait market, a company has to take serious its understanding of hydro-dynamics, materials and components. The lure must also have excellent balance, castability, deflection, unique yet proven vibration and low line-tension during retrieves. DUO exceeded these challenges and set a bench mark in the process with Realis Crank G87, a true super crank and a pinnacle of lure engineering.



REALIS *Aaron Martens* CRANK G87 15A / 20A

NEW COLOR RELEASE · APRIL 2018
Aaron Martens Signature Colors

G87 has for several years belonged to Aaron's arsenal and now with the new signature series he will be putting his stamp on it.



REALIS PENCIL 85/110

Form, function and quality unified in the surface fleet

One of the most applauded lures in DUO's wide range, Realis Pencil sets a standard for all walking baits. The intelligently designed body houses a sphere on the chin of the lure, which makes walk the dog action effortless and also forces the lure to roll, flashing its gill plate. The innovative Pencil provides an angler with the ability to reach his target in a single cast, instantly start the movement and call the fish from greater distances.



PENCIL 85

Length / 85mm (3-1/3") Weight / 9.7g (3/8oz) Type / Floating (Moving Weight)
Hook / #6X Ring / Hook Eye #2

NEW COLOR RELEASE • MAY 2018



PENCIL 110

Length / 110mm (4-3/8") Weight / 20.5g (3/4oz) Type / Floating (Moving Weight)
Hook / #2X Ring / Hook Eye #3

NEW COLOR RELEASE • AVAILABLE NOW



REALIS PENCIL 110 WT (SW LIMITED)

PENCIL 110 SW LIMITED

Length / 110mm (4-3/8") Weight / 22.5g (3/4oz) Type / Floating (Moving Weight)
Hook / #2X Ring / Line Eye #3 - Hook Eye #3

NEW COLOR RELEASE • APRIL 2018

Saltwater tune for even more lethal Pencil 110 sessions

Continuing in the trend of adjusting more to individual markets, we have introduced SW Limited version of Pencil 110, which will not be just a new color range, but also a weight tune to better handle the rough waters. The weight has been adjusted by two grams, totaling at 22.5g offsetting some of the buoyancy for easier handling in waves and rough waters. The additional weight inclusion even further improved the already often praised castability making it that much more of a lethal weapon even in saltwater.



Plate-equipped model Glow color Nature Design

REALIS POPPER64

Length/64mm(2-1/2" in) Weight/9g(3/8oz)
 Type/Floating(Fixed Weight) Hook/#6X
 Ring/Line Eye#2-Hook Eye#2
 NEW COLOR RELEASE • MAY 2018

Ultimately versatile surface tool



REALIS PENCILPOPPER110/148

[110] Length/110mm(4-3/8" in) Weight/18g(5/8oz) Type/Floating(Fixed Weight)
 Hook/#24X Ring/Hook Eye#3
 [148] Length/148mm(5-7/8" in) Weight/40g(1-3/8oz) Type/Floating(Moving Weight)
 Hook/#1J0X Ring/Hook Eye#4

NEW COLOR RELEASE • JULY 2018

Maintain your long distance relationship with trophy fish

Meet a top water lure with dual-purpose actions. The swim actions are effortless, the sound resonates well, the profiles are attractive and the color patterns are proven. We just made top water fishing better.



PENCILPOPPER110/148



PENCILPOPPER110/148 SW LIMITED



REALIS ROZANTE63SP/77SP

[63SP] Length/63mm(2-1/2" in) Weight/5g(1/5oz) Type/Suspending(Magnet Assisted Weight)
 Hook/#10 Ring/Line Eye#1.5-Hook Eye#2 Range/0.6~0.8m(2~3ft)
 [77SP] Length/77mm(3-1/8" in) Weight/8.4g(3/8oz) Type/Suspending(Magnet Assisted Weight)
 Hook/#8 Ring/Line Eye#3-Hook Eye#3 Range/0.7~0.9m(2~3ft)

NEW COLOR RELEASE • MARCH 2018

A finesse jerkbait with superior targeting and fluid darting

The bulky body of Rozante has been fitted with a magnet-assisted moving weight system for superb castability even on light gear. Short pitched action imitates fleeing baitfish.



ROZANTE63SP/77SP



REALIS MINNOW80SP

Length/80mm(3-1/8" in) Weight/4.7g(1/5oz) Type/Suspending(Fixed Weight)
 Hook/#10 Ring/Line Eye#2-Hook Eye#2 Range/0.4~0.8m(1~3ft)





REALIS SHAD 52MR / 59MR / 62DR

Tough Bite? School is in session.

This group of shad means, "school is in session". If you're looking for a deadly finesse lure able to cover several depth columns, you've found it - welcome to Realis Shad series. This trio of Shad; 52MR, 59MR and 62DR; is truly finesse fishing at its best. Most petite baits are extremely difficult to manage due to their weight and profile, however with Realis Shad, an elaborate weight transfer system utilizing magnets to seat the ballast has been installed into the cavity.

NEW COLOR RELEASE • AVAILABLE NOW



SHAD 52MR

■Length/52mm(2" in) ■Weight/3.8g(1/8oz) ■Type/Suspending (Magnet Assisted Weight) ■Hook/#10 ■Ring/Line Eye#1-Hook Eye#1 ■Range/0.8~1.5m(2~5ft)



SHAD 59MR

■Length/59mm(2-3/8" in) ■Weight/4.7g(1/6oz) ■Type/Suspending (Magnet Assisted Weight) ■Hook/#10 ■Ring/Line Eye#1-Hook Eye#1.5 ■Range/1.0~2.0m(3~7ft)



SHAD 62DR

■Length/62mm(2-1/2" in) ■Weight/6.0g(1/4oz) ■Type/Suspending (Magnet Assisted Weight) ■Hook/#8 ■Ring/Line Eye#1.5-Hook Eye#1.5 ■Range/1.5~2.5m(5~8ft)



REALIS VIBRATION 62/68/68 G-Fix

Explosive performance packed in the thinnest profile



It's no mistake. This is one of the thinnest lipless crankbaits ever constructed. Its precision aerodynamics delivers unimaginable shedding of lure drag, allowing the lure to cut through water in unprecedented speed and balance. The tight profile is met with tight vibration emitted in Realis Vibration.

VIBRATION 62

■Length/62mm(2-1/2" in) ■Weight/11g(3/8oz) ■Type/Sinking (Fixed Weight) ■Hook/#8X ■Ring/Line Eye#2-Hook Eye#2

Unique and realistic profile is matched with superb casting and high-pitch action performance making it a stand-out search bait.



VIBRATION 68

■Length/68mm(2-5/8" in) ■Weight/16g(5/8oz) ■Type/Sinking (Fixed Weight) ■Hook/#6X ■Ring/Line Eye#2-Hook Eye#2

The ultra thin design of allows to cut through vegetation and also respond to variety of retrieval speed moving through water column with little resistance.

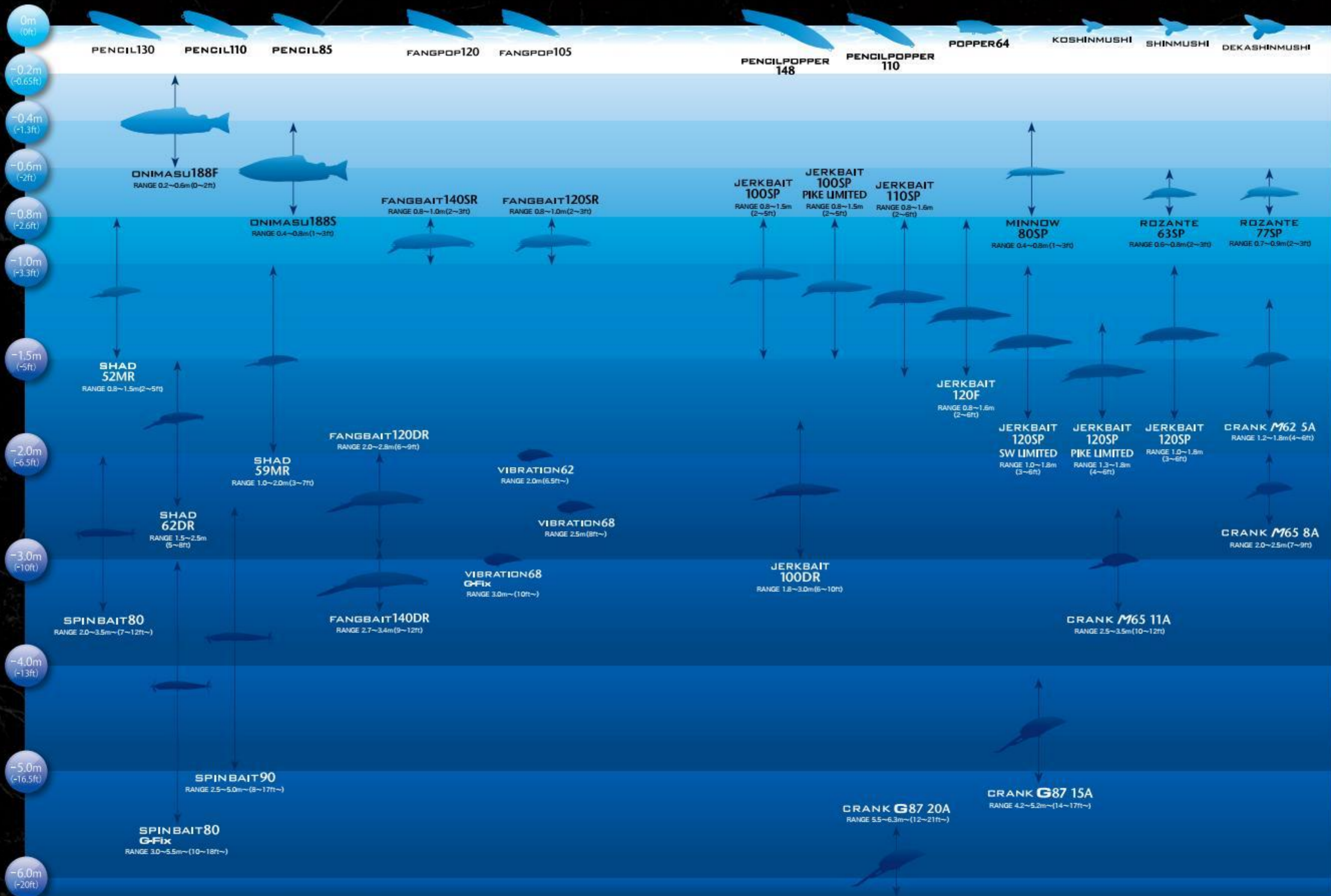


VIBRATION 68 G-Fix

■Length/68mm(2-5/8" in) ■Weight/21g(3/4oz) ■Type/Sinking (Fixed Weight) ■Hook/#6X ■Ring/Line Eye#2-Hook Eye#2

NEW COLOR RELEASE • AVAILABLE NOW

Vib 68 G-Fix is a tungsten model designed specifically to improve trajectory, increase accuracy, trace deeper and provide better control.



REALIS DEPTH CHART

The depth of the lures might vary depending on conditions. Please use the depth chart as a general guide.

REALIS
ACTUAL SIZE

130mm
PENCIL130

148mm
PENCILPOPPER148

110mm
PENCIL110

110mm
PENCILPOPPER110

64mm
POPPER64

85mm
PENCIL85

80mm
MINNOW80SP

90mm
SPINBAIT90

120mm
FANGPOP120

80mm
SPINBAIT80

62mm
SHAD62DR

105mm
FANGPOP105

59mm
SHAD59MR

52mm
SHAD52MR

100mm
JERKBAIT100SP

SPIN 7g

SPIN 5g

110mm
JERKBAIT110SP

77mm
ROZANTE77SP

120mm
JERKBAIT120F JERKBAIT120SP

63mm
ROZANTE63SP

100mm
JERKBAIT100DR

87mm
CRANK G87 20A

140mm
FANGBAIT140SR

87mm
CRANK G87 15A

120mm
FANGBAIT120SR

65mm
CRANK M65 11A

140mm
FANGBAIT140DR

68mm
VIBRATION68

65mm
CRANK M65 8A

120mm
FANGBAIT120DR

62mm
VIBRATION62

62mm
CRANK M62 5A

SALTWATER

Shore / Off-Shore / Micro World

When it comes to saltwater fishing, the DUO brand has had a historical mainstay. Productive lures banded under Tide Minnow, Press Bait or Rough Trail series have an extensive reputation in the global field and continue to dominate the international salt life by adapting to ever-changing conditions.



CHECK OUT 

(VIDEO) TOPWATER ADRENALINE

Absolutely stunning topwater offshore footage via Mark Berg and Fishing Addiction team. GTs smashing surface lures - is there anything better?





MODEL 175 FORTIFIED LIP NEW

Tide Minnow Slim 175 / Flyer 175 has become standards in their class, but the refined lip has at times made it difficult for them to be utilized universally. Expanding their application, we have decided to change the lip material from polycarbonate to polyurethane enhancing its integrity. By changing the material of the lip, Tide Minnow Slim 175 model will reach new level of application for any kind of environment making it an even more lethal tool.

Tide Minnow Slim

Legendary name for seabass anglers came to redefine the standards of the body size. As the pioneering three-hook slim minnow, Tide Minnow set the bar for casting performance and fine-tuned swimming response. It was proved frequently; when they don't bite, put on Tide!



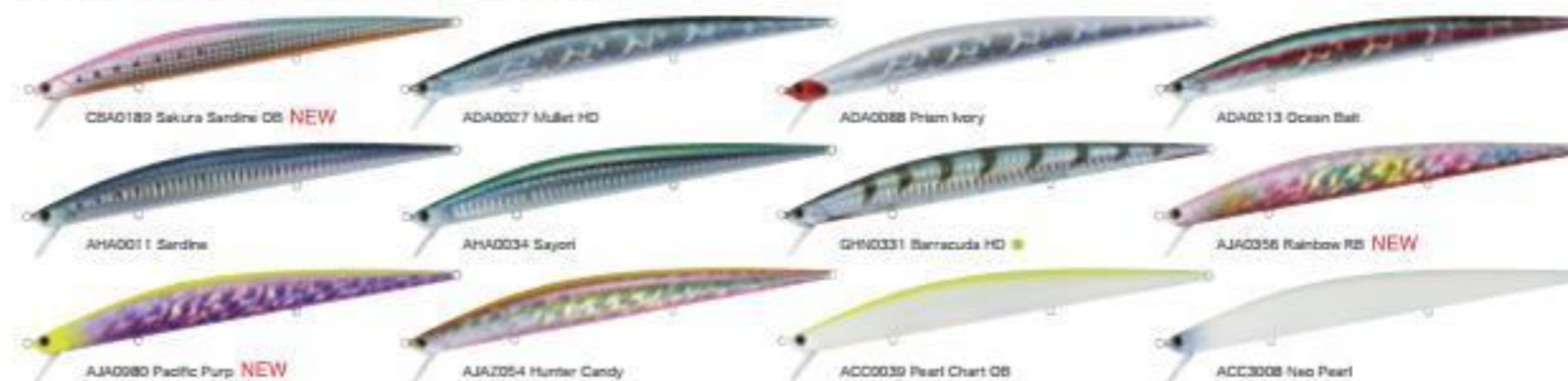
Tide Minnow Slim 140 / 175

[140] ■Length/140mm(5-1/2") ■Weight/18g(5/8oz) ■Type/Floating(Moving Weight) ■Hook/#6 ■Ring/Hook Eye#3 ■Range/0.6~1.0m(2~3ft)

[175] ■Length/175mm(6-7/8") ■Weight/27g(1oz) ■Type/Floating(Moving Weight) ■Hook/#4 ■Ring/Hook Eye#3 ■Range/0.8~1.3m(2~4ft)

NEW COLOR RELEASE • APRIL 2018

A pioneering, often imitated long body design

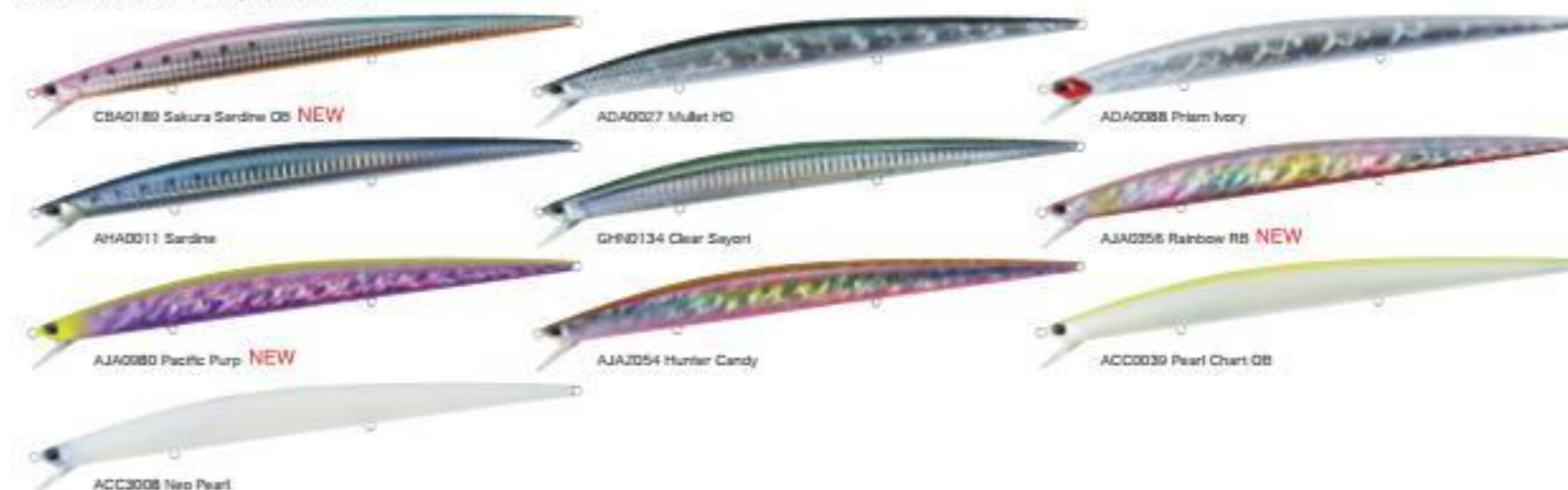


Tide Minnow Slim 200

■Length/200mm(7-7/8") ■Weight/27g(1oz) ■Type/Floating(Moving Weight) ■Hook/#3 ■Ring/Hook Eye#3 ■Range/0.8~0.9m(2~3ft)

NEW COLOR RELEASE • APRIL 2018

The ultimate long minnow



Tide Minnow Slim 140 FLYER / 175 FLYER

[140] ■Length/140mm(5-1/2") ■Weight/21g(3/4oz) ■Type/Sinking(Moving Weight) ■Hook/#6 ■Ring/Hook Eye#3 ■Range/0.8~1.1m(2~4ft) [175] ■Length/175mm(6-7/8") ■Weight/29g(1oz) ■Type/Sinking(Moving Weight) ■Hook/#4 ■Ring/Hook Eye#3 ■Range/0.9~1.4m(3~5ft)

NEW COLOR RELEASE • JUNE 2018

The top carry distance in the Tide Minnow series



Tide Minnow Slim 200 FLYER

■Length/200mm(7-7/8") ■Weight/29.3g(1oz) ■Type/Sinking(Moving Weight) ■Hook/#3 ■Ring/Line Eye#3-Hook Eye#3 ■Range/0.7~1.0m(2~3ft)

NEW COLOR RELEASE • JUNE 2018

The ultimate size, the ultimate performance



Tide Minnow Slim FLYER

Continuing to push the boundaries in the casting game, the Flyer series was built to lead the aerial warfare. With the sinking setting of Tide Minnow Advance Line, anglers are able to further explore waters both horizontally and vertically guaranteeing that their target has nowhere to hide.



ND Limited

Tide Minnow Slim 140 / 175

[140] ■Length/140mm(5-1/2") ■Weight/18g(5/8oz) ■Type/Floating(Moving Weight) ■Hook/#6 ■Ring/Hook Eye#3 ■Range/0.6~1.0m(2~3ft) [175] ■Length/175mm(6-7/8") ■Weight/27g(1oz) ■Type/Floating(Moving Weight) ■Hook/#4 ■Ring/Hook Eye#3 ■Range/0.8~1.3m(2~4ft)

The innovative coloring technique of "Nature Designs" has become to be known for triggering the response even in the most sluggish predators. Being one of the staples of Flyer series, we have decided to answer the calls for the inclusion of the ND colors also in standard TMS range via this limited edition.

NEW COLOR RELEASE • AUGUST 2018



Red Tails Limited

Tide Minnow Slim 140 FLYER / 175 FLYER

[140] ■Length/140mm(5-1/2") ■Weight/21g(3/4oz) ■Type/Sinking(Moving Weight) ■Hook/#6 ■Ring/Hook Eye#3 ■Range/0.8~1.1m(2~4ft) [175] ■Length/175mm(6-7/8") ■Weight/29g(1oz) ■Type/Sinking(Moving Weight) ■Hook/#4 ■Ring/Hook Eye#3 ■Range/0.9~1.4m(3~5ft)

The special series of "Red Tails" imitates wounded fish looking like an easy prey for the predator. Taking three of the most popular saltwater patterns in Sardine, Sayori and White Pearl with an added contrast of imitation of a bleeding tail, creates an irresistible snack for number of species.

NEW COLOR RELEASE • SEPTEMBER 2018



Nature Design

TIDE MINNOW SERIES RENEWAL NEW

DUO has originally built its name on production of slim seabass minnows and despite the decade which has passed from debut of these models, they still remain some of the finest performers in the market. With the modernized packaging and renewed color range of these vintage models, you can further advance your versatility when targeting seabass.

NEW PACKAGING



NEW COLORS

Tide Minnow 120 / 135 SURF

[120] ■Length/120mm(4-3/4") ■Weight/17g(5/8oz) ■Type/Floating(Moving Weight)
■Hook/#6 ■Ring/Line Eye#3-Hook Eye#3 ■Range/0.3~0.7m(1~2ft)

[135] ■Length/135mm(5-1/3") ■Weight/24g(7/8oz)
■Type/Floating(Magnet Assisted Weight) ■Hook/#4
■Ring/Line Eye#3-Hook Eye#3 ■Range/0.5~0.9m(2~3ft)

NEW COLOR RANGE • AVAILABLE NOW

The outer seas specialist

Fishing grounds which face the open sea are directly affected by the wind and the waves and often get rough. Whereas many lures tend to lose balance in big swell and strong outgoing currents, the Surf series was specifically designed to be used under these conditions.



Tide Minnow 125 / 145 SLD-F/S

[125 SLD-F] ■Length/125mm(4-7/8") ■Weight/14.5g(1/2oz)
■Type/Floating(Moving Weight) ■Hook/#6
■Ring/Line Eye#3-Hook Eye#3 ■Range/0.5~0.8m(2~3ft)

[125 SLD-S] ■Length/125mm(4-7/8") ■Weight/15.5g(1/2oz)
■Type/Sinking(Moving Weight) ■Hook/#6
■Ring/Line Eye#3-Hook Eye#3 ■Range/0.5~0.9m(2~3ft)

[145 SLD-F] ■Length/145mm(5-3/4") ■Weight/20.5g(3/4oz)
■Type/Floating(Moving Weight) ■Hook/#4
■Ring/Line Eye#3-Hook Eye#3 ■Range/0.7~1.0m(2~3ft)

[145 SLD-S] ■Length/145mm(5-3/4") ■Weight/22.5g(3/4oz)
■Type/Sinking(Moving Weight) ■Hook/#4
■Ring/Line Eye#3-Hook Eye#3 ■Range/0.8~1.1m(3~4ft)

NEW COLOR RANGE • AVAILABLE NOW

Incomparable castability

Tide Minnow SLD series was developed as a slim-type, long distance model, with castability as the top priority. The strong 'wobble and roll' action not only appeals to the game fish, but also allows anglers to judge the movement of the water, making it a great pilot lure for covering an extensive area.



Tide Minnow 120 LD

■Length/120mm(4-3/4") ■Weight/23g(7/8oz) ■Type/Sinking(Moving Weight)
■Hook/#2 ■Ring/Line Eye#4-Hook Eye#4 ■Range/0.9~1.3m(3~4ft)

NEW COLOR RANGE • AVAILABLE NOW

Rough water specialist

TM120LD has been developed with precisely balanced ability to catch the water with the lip. It's slow sinking, yet high density body allows for great action and response in big swell and whitewash.



Tide Minnow liptless slim

■Length/125mm(4-7/8") ■Weight/19g(5/8oz) ■Type/Floating(Moving Weight)
■Hook/#4 ■Ring/Line Eye#3-Hook Eye#3 ■Range/0~0.4m(1~2ft)

NEW COLOR RANGE • AVAILABLE NOW

Natural Subsurface Swimmer

Shallow areas are at times hot spots for seabass and benefits of naturally swimming lure that can reach those spots prove very effective when fish won't come to bite topwater lures.



CEO & CHIEF DESIGNER

Masahiro Adachi

Since its inception, DUO has forged a 20-year standard in lure manufacturing that has utilized future technologies and innovation. A company beyond its time, the DUO concept of commitment and quality is unprecedented and attained only at the highest level of execution and clearly exceeds today's perceptions.

The personification of this philosophy is DUO's CEO and chief designer, Masahiro Adachi, one of the most respected lure designers in Japan.

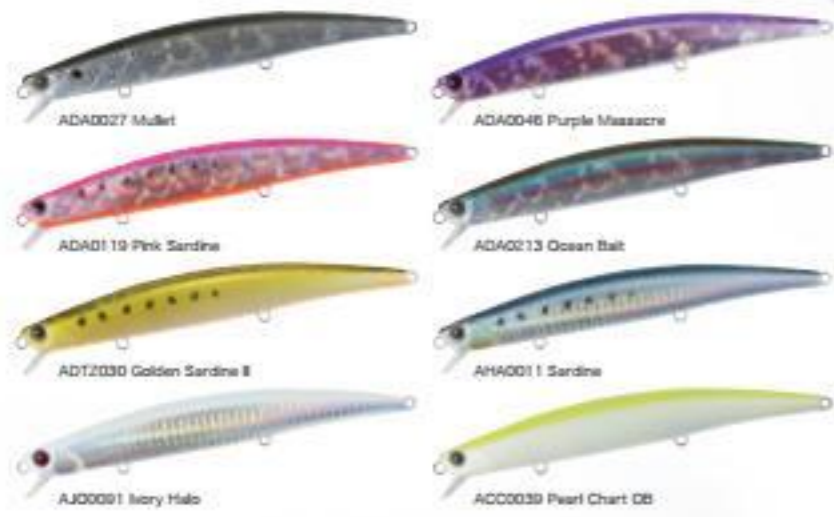
Masahiro Adachi's designs were first introduced in the early 90's when he shocked the lure world with his engineering. Adachi's designing process originates from thought, but his understanding of lure action developed from studying the intricate swim behavior of live bait-fish. Another vital element to Mr. Adachi's gift is his detailed understanding of predator fish and their biology. Mr. Adachi's philosophy of "functional beauty" means he is trying to create lures that both unify in form and function, making lures that are creatively known as "better than the real one".

Adachi does not create lures in the traditional JDM way with the use of drawing and CAD. Rather, every creation begins as a carving. Adachi mentally envisions the swim-action of his lure and begins carving a design from ABS plastic. The process could be considered organic. Mr. Adachi's designs are original, sometimes so intricate that they require months to perfect.

The integration of hand created designs and high precision digital constructs are imperative priorities for the creator, Mr. Adachi.

This approach will remain a trademark for DUO lures.

アドアチ



Tide Minnow 150 SURF

Length/150mm(5-7/8") Weight/29g(1oz) Type/Floating(Magnet Assisted Weight) Hook/#3 Ring/Line Eye#4-Hook Eye#4 Range/0.5~1.0m(2~3ft)

Targeting the lunkers that are feeding on large baitfish
This is a user-friendly minnow which has none of the negative characteristics of most other large lures on the market, such as difficulty casting or a heavy feel while reeling.



Tide Minnow 75 SPRINT

Length/75mm(3") Weight/11g(3/8oz) Type/Sinking(Fixed Weight) Hook/#10 Ring/Line Eye#2-Hook Eye#2 Range/0.5~0.9m(2~3ft)

NEW COLOR RELEASE • JULY 2018

A versatile minnow to be controlled aggressively

Sprint is a highly responsive sinking minnow which can be utilized in various fields and target various species, both in fresh and saltwater.



TERRIF DC-9 BULLET / DC-12 TYPE I

[DC-9] Length/90mm(3-1/2") Weight/15g(1/2oz) Type/Slow Floating(Magnet Assisted Weight) Hook/#4 Ring/Hook Eye#3 Range/0.2~0.5m(1~2ft)

[DC-12] Length/120mm(4-3/4") Weight/18g(5/8oz) Type/Slow Sinking(Magnet Assisted Weight) Hook/#6 Ring/Hook Eye#3 Range/0.2~0.5m(1~2ft)

The strategic shallow model

The unique design of the lip and 'suspended' weighting have allowed the DC-9/12 to trace just below the water's surface at various retrieval speeds. One can also perform a side-to-side sliding action with some technical rod work, which replicates baitfish on the run.



MOAB 120F

Length/120mm(4-3/4") Weight/13g(1/2oz) Type/Floating(Magnet Assisted Weight) Hook/#6 Ring/Line Eye#3-Hook Eye#3 Range/0.6~1.0m(2~3ft)

Mother of all baits

Breaking previous conceptual boundaries, MOAB was created in search for a 'productive lure' for all species, freshwater or saltwater. A magnet secures the main moving weight giving a consistent swimming action. This swim balance is suited for not only strong rip currents but also fast flowing river currents that home to trout.



Beach Walker Afraid

Beach Walker was born for surf fishing. Condensing specs for capturing surf species like flounder and seabass such as swimming response and range setting that can reliably trace the hit strike zone. It will give you confidence to cast under any circumstance and give you performance to make your fishing effective.

Beach Walker Afraid NEW PRODUCT

Length/110mm(4-3/8") Weight/27g(1oz) Type/Sinking(Fixed Weight) Hook/#4 Ring/Line Eye-Hook Eye#3

NEW PRODUCT RELEASE • MAY 2018

Double impact of prop and blade

While the characteristic prop and blade generate wave motion, another unique feature of Afraid is the ability to methodically approach the target via slow retrieve. The finessed rolling action further stimulates the predators and imitates an easy prey.



BeachWalker Revolt

NEW PRODUCT

Length/80mm(3-1/8") Weight/34g(1-1/4oz) Type/Sinking(Fixed Weight)
Hook/#5 Ring/Lure Eye-Hook Eye#3

NEW PRODUCT RELEASE • MAY 2018

Bladed power to mesmerize

The flashing of the blade, the water-flow against the lure and the volume of the body will collectively enhance the lure's presence to the target. With the newly designed large blade, we were able to achieve great appeal while reducing the drag against the water.



CSA0189 Sakura Sardine OB

CSA0297 Half Green Gold

AHA0087 Masume Sardine

CHA0279 Taureglau OB

COA0270 Sparkling Pink Candy

CFA0367 Tequila Sunrise

CFA0371 Hokkaido Dawn

CGA0184 Hime Candy



BeachWalker Haul Head

[Haul Jighead] Weight/14g(1/2oz) - 21g(3/4oz) - 27g(1oz) - 35g(1-1/4oz)
Hook/#5 Quantity/2pcs of jighead and 4 pieces of hook



AHA0279 Taureglau OB

AJA0199 Shocking Pink

AGA0020 Blue Back

ADA0026 Red Gold

ADA0168 Pink/Red Belly

ADA0173 Ichimochi PB

ADA0242 Pink Gold OB

PC00519 Pink Glow

BeachWalker Haul Shad

[Haul Shad] Size/3-3/4" - 4-1/2" Quantity/5pcs

[Haul Set] Weight/14g(1/2oz) - 21g(3/4oz) - 27g(1oz) Hook/#5
Quantity/1pc of jighead and 2pcs of shad and 2pcs of hook



S001 White Glow

S003 Pro Blue

S004 Pink Glow

S005 Watermelon

S006 Bubblegum Pink

S007 Red Ghost

S008 Lime Green

S009 Pearl White II

S010 Chart Gold

S011 Blue Ghost

BeachWalker Flipper

[32] Length/70mm(3") Weight/32g(1-1/8oz) Type/Sinking
Hook/Front: #8 Rear: #6 Ring/Hook Eye#7

[40] Length/80mm(3-1/8") Weight/40g(1-3/8oz) Type/Sinking
Hook/#6 Ring/Hook Eye#3

The new casting king of the Beach

The first metal jig in BW series will enable anglers to reach new fishing grounds. Though heavy metal jigs tend to be difficult to utilize in most situations and anglers seem to avoid using them, "Flipper" can search a vast area efficiently and three dimensionally.



GHA0018 Himegl

GHA0087 Masume Sardine

GHA0279 Taureglau OB

GHA0282 Hotta Sardine

GQA0268 Sparkling Green Candy

GQA0173 Ichimochi PB

GQA0184 Hime Candy

GQA0238 Strawberry Pink

GQA0242 Pink Gold OB

GQA0280 Hime Pink II



BeachWalker Fulcrum

Length/95mm(3-3/4") Weight/31g(1-1/8oz) Type/Heavy Sinking(Fixed Weight)
Hook/#4 Ring/Hook Eye#3 Range/1.0~2.0m(3~6ft)

NEW COLOR RELEASE • APRIL 2018

Heavy sinking minnow optimized for surf fishing

The heavy weight setting allows "Fulcrum" to rocket through the air while the "Bevel" lip design assists the lure to grab the water. It is equipped with a strong rolling and an irregular flashing action which stimulates feeding instincts of various targets.



DBA0189 Sakura Sardine OB

AHA0087 Masume Sardine

GHA0188 Clear Pink Sardine

GHA0279 Taureglau

ADA0145 Firegold

CFA0371 Hokkaido Dawn NEW

CFA0309 Gold Hunter Candy NEW

GQA0184 Hime Candy

AGA0242 Pink Gold OB

GQA0280 Hime Pink II



DBA0189 Sakura Sardine OB

DDA0171 Pink Zebra Glow

DDA0199 Shocking Pink

AHA0087 Masume Sardine

AHA0119 Pink Sardine

GHA0279 Taureglau

CFA0371 Hokkaido Dawn NEW

CFA0309 Gold Hunter Candy NEW

ADA0145 Firegold

AGA0242 Pink Gold OB



BeachWalker Axcion

Length/95mm(3-3/4") Weight/30g(1oz) Type/Heavy Sinking(Fixed Weight)
Hook/#4 Ring/Hook Eye#3 Range/0.6~1.5m(2~5ft)

NEW COLOR RELEASE • MAY 2018

Versatility! Select the lure "Axcion" by retrieval speed

With its 95mm and 30g heavy weight body and bevel lip, we have minimized the air-resistance and stress on the lure from strong cross winds. Axcion produces casting distance which rivals those of metal jigs not only for experts but also beginners.



ABA0030 Sardine RB

CSA0344 Green Gold Fusion NEW

CSA0189 Sakura Sardine OB

ADA3601 Rude Boy

ADA4071 Hokkaido

AHA0087 Masume Sardine

AGA0111 White Glow

ADA0145 Firegold

AGA0233 Chart Head Sayori

COA0113 Double Pink Chart NEW

BeachWalker 120MD

Length/120mm(4-3/4") Weight/20g(3/4oz) Type/Sinking(Moving Weight)
Hook/#6 Ring/Lure Eye#3-Hook Eye#3 Range/0.8~1.5m(2~5ft)

NEW COLOR RELEASE • MAY 2018

A search bait for a wide array of species

Sinking diver 120MD was created to efficiently scout the vast coastline. With its reliable casting ability, action balance designed to capture the complex current and a trace range more extensive than any other normal type minnow, 120MD will exert its true abilities as a search bait for surf fishing.

MANIC
MOVE

Bay RUF MANIC

Bay Ruf Manic was designed with a totally new concept in mind. The state of the art action "Manic Move" created by the Bay Ruf Manic is like no other action seen before. The lure's body size, volume, buoyancy, weighting, and body shape have all been delicately adjusted. The action created by this sensitively balanced lure is a tight rolling only; there is no wobbling or sinusoidal action. The lure will float to the subsurface and create an exquisite wake. The tight rolling action will add a weak but unique swell in the V shaped wake, appealing more efficiently to the game fish. This tight rolling pulsating action leaves a vibrant wake even at the slowest retrieval speeds mesmerizing myriad of species.

MANIC FISH88 / 99

NEW
PRODUCT

[88] ■Length/88mm(3-1/2") ■Weight/11g(3/8oz) ■Type/Sinking(Fixed Weight)
■Hook/#8 ■Ring/Line Eye---Hook Eye#2 ■Range/0~0.2m(0~1ft)

[99] ■Length/99mm(3-7/8") ■Weight/16.2g(5/8oz) ■Type/Sinking(Fixed Weight)
■Hook/#6 ■Ring/Line Eye---Hook Eye#2 ■Range/0~0.2m(0~1ft)

NEW COLOR RELEASE • MAY 2018



MANIC 155

NEW
PRODUCT

■Length/155mm(6-1/8") ■Weight/27.5g(1oz) ■Type/Sinking(Fixed Weight) ■Hook/#6 ■Ring/Line Eye---Hook Eye#3 ■Range/0.2~0.3m(0~1ft)

NEW PRODUCT RELEASE • AVAILABLE NOW



DUO × COREMAN
International Japanese High Performance Fishing Lures

DEPRIVE

NEW
PRODUCT

The developmental concept for the Deprive was to create a bigbait which fits seabass game. DUO was responsible for the design and hardware, and COREMAN was responsible for the smaller action and other settings. Through the long road of trail and error, we have finally come to develop our first collaborative item. We present you the "Deprive", the perfect weapon to target the seabass feeding on massive baitfish.

DEPRIVE

■Length/170mm(6-3/4") ■Weight/50g(2oz) ■Type/Slow Sinking(FW), Slow Floating(SW) (Fixed Weight)
■Hook/#2 ■Ring/Hook Eye#4 ■Range/0.5~1m(2~3ft)

NEW PRODUCT RELEASE • AVAILABLE NOW



Shore Fishing
ACTUAL SIZE



ROUGHTRAIL

Prototype

HYDRA 220

There is hardly anything more heart pumping than smashing predators on surface lures.

The new Hydra 220 will mesmerize array of species with its dynamic skipping action staying on the surface imitating perfectly the movement of needlefish and garfish, while the prolonged slim body accounts for ease of cast.

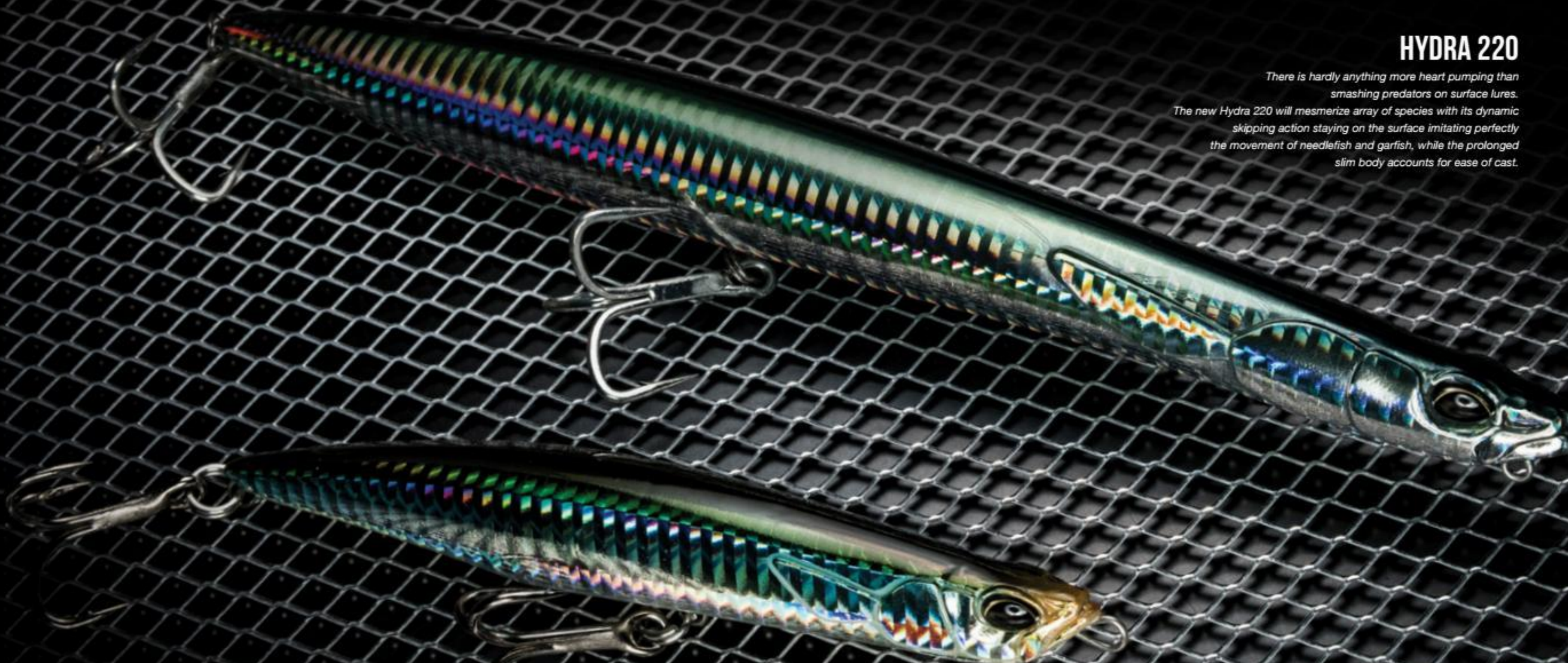
MALICE 130

A jig minnow developed for offshore casting game.

Even with high specific gravity, thanks to aerodynamic designs

Malice 130 has an outstanding castability even with a thick leader.

With an appealing horizontal fall, Malice 130 will produce bite opportunities at times where nothing else works.



ROUGHTRAIL BLAZIN

A perfect balance of weight and action

Rough Trail has been conceived with the focus on optimum setting of weight, allowing it to be fished deeply and cast far, while preserving action.

The trademark bevel cut lip and the flip design tail creates lift allowing the lure to initiate the action smoothly while maintaining its balance at high speed retrieval.

With two new heavier models added to the series, you will be able to utilize the models for even deeper fishing.

ROUGHTRAIL BLAZIN

Length/92mm (3-5/8") Weight/40g (1-3/8oz)
Type/Heavy Sinking(Fixed Weight) Hook/#4
Ring/Line Eye#4-Hook Eye#4 Range/1.5~2.0m (5~7ft)

NEW COLOR RELEASE • AUGUST 2018

BLAZIN SERIES



ROUGHTRAIL 130S

Length/130mm (5-1/8") Weight/29g (1oz) Type/Sinking(Fixed Weight)
Hook/#1 Ring/Line Eye#4-Hook Eye#4 Range/1.0~1.5m (3~5ft)

Swimming response under extreme conditions

With priority on strength and swimming response, 130S was designed to handle areas where strong currents and large swells created by an uneven seabed make fishing difficult. It is able to trace a line in rough conditions without jumping out on the surface.



ROUGHTRAIL MAX BLAZIN

Length/92mm (3-5/8") Weight/50g (2oz)
Type/Heavy Sinking(Fixed Weight) Hook/#4X
Ring/Line Eye#4-Hook Eye#4 Range/1.5~2.0m (5~6ft)

NEW PRODUCT RELEASE • AUGUST 2018

ROUGHTRAIL BLAZIN 110

Length/110mm (4-3/8") Weight/60g (1-3/4oz)
Type/Heavy Sinking(Fixed Weight) Hook/#2
Ring/Line Eye#5-Hook Eye#5

NEW PRODUCT RELEASE • JUNE 2018

ROUGHTRAIL 青吹 148F

Length/148mm (5-7/8") Weight/38g (1-1/2oz) (47g/1-5/8oz rigged with hooks)
Type/Floating(Fixed Weight) Hook/Ring/Sold separately(Recommended Hook: STX58 #2/0 Recommended Ring: #8) Range/0~0.2m (0~1ft)

NEW COLOR RELEASE • JULY 2018



ROUGHTRAIL 青吹 1485/1885F

[1485] Length/148mm (5-7/8") Weight/67g (2-3/8oz) Type/Sinking(Fixed Weight)
Hook/Ring/Sold separately(Recommended Hook: STX58 #2/0 Recommended Ring: #8)
[1885F] Length/188mm (7-2/5") Weight/100g (3-1/2oz) Type/Slow Floating(Fixed Weight)
Hook/Ring/Sold separately(Recommended Hook: SPHX #4/0 Recommended Ring: #9)
Range/0~0.2m (0~1ft)

NEW COLOR RELEASE • JULY 2018



A revolutionary concept of a diving pencil

The unique body design of Aomasa rivals those wooden models with its sharp action, controllability and body strength. This lure can be easily controlled to stage "diving", "S-curve" and "sliding" action by novice or expert anglers in various field conditions.

Completing the Aomasa range for new depth applications

The outstanding castability of the new Aomasa models will surely be an advantage to those land based anglers. With weight adjustment, not only have we drastically increased the casting distance, but the lure is able to fall in a horizontal posture mimicking a dying or weak bait fish.



Aomasa
青吹
ROUGHTRAIL



Press Bait

The originally conceived series of jig minnows aims to represent the best of both worlds – the castability of the metal jigs and the refined action and responsiveness of hard baits. With the ABS bodies being heavily filled with weight and sufficient strength, Press Bait models will be a lethal weapon for both shore and off-shore fishing.

Press Bait 85

Length/85mm (3-3/8") Weight/28g (1oz) Type/Sinking(Fixed Weight)
Hook/#6 Ring/Hook Eye#3

NEW COLOR RELEASE - AUGUST 2018

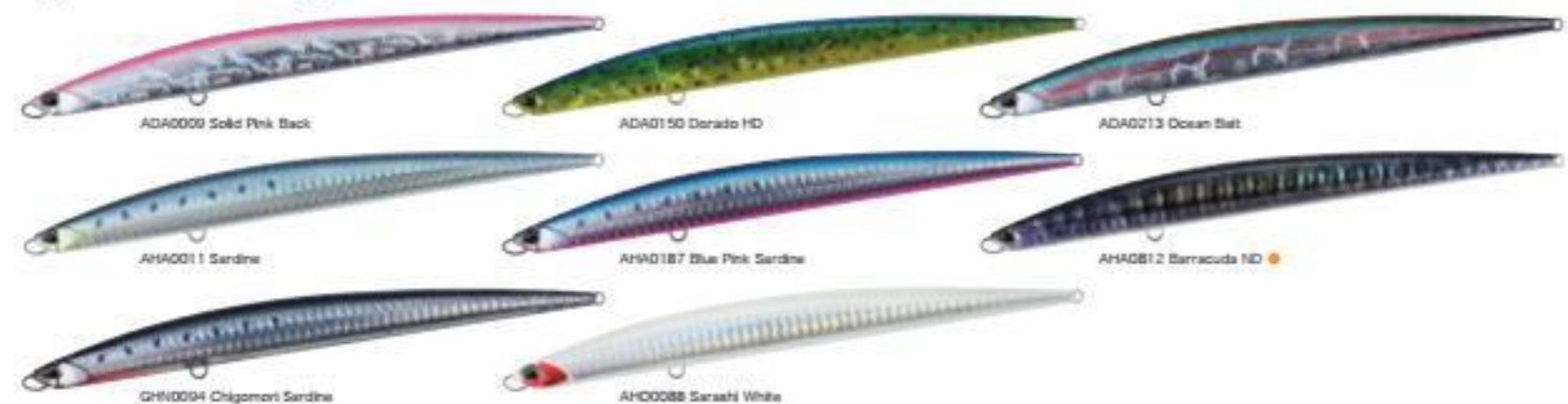
Versatile saltwater jig minnow



Press Bait SAIRA

Length/175mm (6-7/8") Weight/50g (1-3/4oz) Type/Sinking(Fixed Weight) Hook/#1 Ring/Hook Eye#4

A jig minnow mimicking thin bait fish



Press Bait 125HD

Length/125mm (4-7/8") Weight/43g (1-1/2oz) Type/Sinking(Fixed Weight)
Hook/# — Ring/Hook Eye#4

NEW COLOR RELEASE - AUGUST 2018

A heavy-duty, high response lure



D-SQUID

Length/95mm (3-3/4") Weight/21g (3/4oz) Type/Sinking(Fixed Weight)

NEW COLOR RELEASE - AVAILABLE NOW

A squid jig for a "tip-run" method

By eliminating the feather wing which causes drag and internalizing the weight in the body, D-Squid reaches the bottom at a speedy rate and allows a light yet sharp darting action in the deep zone. With the D-Squid, you will easily be able to reach those deep zones never fished before.



Tide Vib SCORE 78

Length/78mm (3-1/8") Weight/28g (1oz) Type/Sinking(Fixed Weight)
Hook/#6 Ring/Hook Eye#3

A hybrid blade with translucent body

Score is a unique concept of a lure unifying the best features of a blade bait and injection hard bait. The wire-through structure of the lure enhances the strength, while the strong and wide vibrating pulsation will appeal to targets in vast areas.



Tide Vib SCORE 100

Length/100mm (3-7/8") Weight/35g (1-1/4oz) Type/Sinking(Fixed Weight)
Hook/#4 Ring/Lure Eye#3+Hook Eye#3

Upsize for even wider applications

Tide Vib Score has found versatile application for both shore and off-shore fishing and we are finally answering the calls for larger size which expands the targets of this unique blade bait also to blue runners, on top of its standard commanding performance in the surf. Score 100 is yet another of DUO lures offering a progressive approach to lure fishing.



Off-Shore Fishing
ACTUAL SIZE



TideVib SCORE 78 78mm

TideVib SCORE 100 100mm

D-SQUID 95mm

Press Bait 85 85mm

Press Bait 125HD 125mm

Press Bait SAIRA 115mm

MALICE 130 (Prototype) 130mm

HYDRA 220 (Prototype) 220mm

RoughTrail BLAZIN 110 110mm

RoughTrail BLAZIN 92mm

RoughTrail 130S 130mm

RoughTrail Aomasa 148 148mm

RoughTrail Aomasa 188 188mm

DragMetal NEW PRODUCT

The long awaited DUO's answer to jigging

Jigging has over the years proven itself as a productive method for catching various species and continues to evolve. DUO has entered the jig game with Drag Metal, bringing a more effective tool. Drag Metal flies like a rocket and efficiently sinks to the deep range. Furthermore, its stable swimming ability and horizontal sliding action during the fall will mesmerize the fish through simple reeling of the lure or a combination of jerking and twitching.



DragMetal Cast

[15g] ■Length/43.5mm(1-3/4") ■Weight/15g(1/2oz) ■Hook/Front: Assist Hook & Tinsel #11, Rear: Treble #8 ■Ring/Front: #2, Rear: #2

[20g] ■Length/49mm(1-7/8") ■Weight/20g(3/4oz) ■Hook/Front: Assist Hook & Tinsel #11, Rear: Treble #8 ■Ring/Front: #2, Rear: #2

[30g] ■Length/56mm(2-1/4") ■Weight/30g(1oz) ■Hook/Front: Assist Hook & Tinsel #11, Rear: Treble #8 ■Ring/Front: #3, Rear: #3

[40g] ■Length/60mm(2-3/8") ■Weight/40g(1-3/8oz) ■Hook/Front: Assist Hook & Tinsel #11, Rear: Treble #8 ■Ring/Front: #3, Rear: #3

NEW PRODUCT RELEASE • AVAILABLE NOW



DragMetal Cast Slow

[15g] ■Length/43.5mm(1-3/4") ■Weight/15g(1/2oz) ■Hook/Front: Assist Hook & Tinsel #8 x 2, Rear: Assist Hook #8 ■Ring/Front: #2, Rear: #2

[20g] ■Length/49mm(1-7/8") ■Weight/20g(3/4oz) ■Hook/Front: Assist Hook & Tinsel #11 x 2, Rear: Assist Hook #11 ■Ring/Front: #2, Rear: #2

[30g] ■Length/56mm(2-1/4") ■Weight/30g(1oz) ■Hook/Front: Assist Hook & Tinsel #13 x 2, Rear: Assist Hook #13 ■Ring/Front: #3, Rear: #3

[40g] ■Length/60mm(2-3/8") ■Weight/40g(1-3/8oz) ■Hook/Front: Assist Hook & Tinsel #13 x 2, Rear: Assist Hook #13 ■Ring/Front: #3, Rear: #3

NEW PRODUCT RELEASE • AVAILABLE NOW



DragMetal Cast Slim

[20g] ■Length/65mm(2-1/2") ■Weight/20g(3/4oz) ■Hook/Front: Assist Hook & Tinsel #13, Rear: Treble #8 ■Ring/Front: #3, Rear: #2

[30g] ■Length/73mm(2-7/8") ■Weight/30g(1oz) ■Hook/Front: Assist Hook & Tinsel #13, Rear: Treble #8 ■Ring/Front: #3, Rear: #3

[40g] ■Length/82mm(3-1/4") ■Weight/40g(1-3/8oz) ■Hook/Front: Assist Hook & Tinsel #13, Rear: Treble #8 ■Ring/Front: #3, Rear: #3

[60g] ■Length/94mm(3-3/4") ■Weight/60g(2-1/8oz) ■Hook/Front: Assist Hook & Tinsel #14, Rear: Treble #8 ■Ring/Front: #3, Rear: #3

NEW PRODUCT RELEASE • AVAILABLE NOW





TETRAWORKS



TETRAWORKS TETRAJIG NEW PRODUCT

User-friendly and versatile micro jig

The Tetra jig was created to target those fish spooked with soft plastics or hard-bodied lures and to reach those depths, which were out of range for your ordinary micro lures. It is a center-balanced jig designed to reduce line trouble and increase controllability with a fish like design. A combination of fast sinking and pausing will mesmerize your target. A new era has begun for the micro jugging game.

[3g] ■Length/32mm(1-1/4") ■Weight/3g(1/8oz) ■Hook/Front: Assist Hook & Tinsel #7, Rear: Treble #14 ■Ring/Front: #1, Rear: #1
NEW PRODUCT RELEASE • MARCH 2018

[7g] ■Length/41mm(1-5/8") ■Weight/7g(1/4oz) ■Hook/Front: Assist Hook & Tinsel #11, Rear: Treble #14 ■Ring/Front: #1, Rear: #1
NEW PRODUCT RELEASE • AVAILABLE NOW

[5g] ■Length/37mm(1-1/2") ■Weight/5g(3/16oz) ■Hook/Front: Assist Hook & Tinsel #7, Rear: Treble #14 ■Ring/Front: #1, Rear: #1
NEW PRODUCT RELEASE • MARCH 2018

[10g] ■Length/46mm(1-7/8") ■Weight/10g(3/8oz) ■Hook/Front: Assist Hook & Tinsel #11, Rear: Treble #12 ■Ring/Front: #1, Rear: #1
NEW PRODUCT RELEASE • AVAILABLE NOW

THE COLORFUL WORLD OF #TETRAWORKS



TOTAL PACKAGE CONCEPT

Design & Development

Since its foundation over twenty years ago, DUO has set on a path to represent the very best in the lure fishing. The commitment to the highest level of quality has been built into the concept of the company, and DUO has continuously pursued the cutting edge technology for lure development.

Each of the DUO lures combines advanced technology with the human touch; the attention to detail is combined with the preciseness of the machine and each lure carries the fingerprints of tens of people's hands it goes through during the production process.

From the very first idea, the very first draft up to the sealing of the package, DUO always set out on a mission to push the levels of creativity, set the new standard and provide a perfect tool. "The Total Package" concept has been the philosophy of DUO since its foundation and the foundation which it was built on was never compromised.

"Total Package" means unifying all the processes under one roof, being able to offer you product of higher quality, each with its own identity, carefully quality checked at a better value. It means paying attention to every little detail of the lures, unifying both the form and function into a perfect harmony.



1 Production of the Master

Mr. Adachi avoids use of computers for the initial body master, and carves from a block of ABS. The advantage is that it combines strength and rigid properties, as well as the rubbery toughness and specific gravity of the actual product.



2 Carved Electrode Manufacturing

Based on the action sample, outline data is measured to cut out a pillar shaped pure-copper electrode. The initial shape is formed by belt sander and the electrode is refined with a precision drill.



3 Rib Processing

The interior volume of the cavity is produced and the fixed interior space is directly carved out to create the planned rails and space for ballast.



4 Obtaining the First Injection Body Sample

The first injection bodies are created and tested for integrity and harboring components. Tolerances must be exact for ballast, hook positioning and lip angle. Once product passes precise testing, production is commenced.



5 Fusion

DUO utilizes a detailed time intensive process called "Fusing". MEK chemical fusing is accomplished by micro fusion, which actually melts body seams together creating a stronger and water-tight unit. The bonded units are then placed in curing pin to complete a strong unitized form.



6 Water Intrusion Test

To test the integrity of the adhesion, lures are water tested, immersed into hot water exceeding 70 degrees for around 20 seconds. The hot water makes the air expand within lure cavity and imperfection are detected quickly. For example leakages are identified when bubbles are produced and thereby can be rectified immediately.



7 Multi-Step Painting

DUO painting is accomplished manually, one step, one layer at a time. The complexity of coating is also time intensive and expensive, but necessary. DUO's staff will coat a lure between 5 to 15 layers of paint depending on the lure and its tasks. There are over 400 variations of colors available in the catalogue.



8 Top Coat & Quality Control

After an additional quality control inspection has been completed, a measured clear coat is added to protect the integrity of the paint. The lures pass through multiple layers of clear coat application. Once inspection is completed, the lure's name is printed and sent to packaging for distribution.

TETRA WORKS YURAPEN

Length/48mm(1-7/8") Weight/2.5g(1/8oz)
Type/Floating(Fixed Weight) Hook/#12 Ring/Line Eye#1-Hook Eye#1

NEW PRODUCT RELEASE - AVAILABLE NOW

Topwater head-shaker to draw out the bite



TETRA WORKS FURAFURA

Length/48mm(1-7/8") Weight/2.5g(1/8oz)
Type/Slow Sinking(Magnet Assisted Weight System) Hook/#12 Ring/Line Eye#1-Hook Eye#1 Range/0.5~1m(2~3ft)

NEW PRODUCT RELEASE - AVAILABLE NOW

Trump card in high-pressure conditions



TETRA WORKS SPIN

Length/28mm(1-1/8") Weight/5g(3/16oz) Type/Sinking(Solid Body) Hook/#14 Ring/Line Eye#1-Hook Eye#1

NEW PRODUCT RELEASE - AVAILABLE NOW

Key to full range capture



TETRA WORKS PERAKKO

Length/48mm(1-7/8") Weight/4.6g(1/8oz) Type/Sinking(Fixed Weight) Hook/#12 Ring/Hook Eye#1

Pulsating effect to attract the target



TETRA WORKS TOTO42S

Length/42mm(1-5/8") Weight/2.8g(1/10oz) Type/Sinking(Fixed Weight) Hook/#12 Ring/Line Eye#1-Hook Eye#1 Range/0.3~0.6m(1~2ft)

NEW COLORS - AVAILABLE NOW

An almighty appealing standard sinking minnow

TOTO42S/48HS



TETRA WORKS TOTO48HS

Length/48mm(1-7/8") Weight/4.3g(1/8oz) Type/Sinking(Fixed Weight) Hook/#12 Ring/Line Eye#1-Hook Eye#1

NEW PRODUCT RELEASE - AVAILABLE NOW

Heavy sinking up-sized model with improved adaptability



TETRA WORKS KURAKURA

Length/30mm(1-1/8") Weight/2.5g(1/8oz) Type/Rattle Weight Hook/Original Single Red Hook Ring/Line Eye#1-Hook Eye#1 Range/0.9~1.2m(2~4ft)

A micro crank for those bottom eaters



TETRA WORKS IKAKKO

Length/38mm(1-1/2") Weight/5.7g(1/5oz) Type/Sinking(Fixed Weight) Hook/#14 Ring/Hook Eye#1

A solid jig minnow allowing diverse approach



TETRA WORKS POCOPOCO F

Length/40mm(1-5/8") Weight/3.0g(1/10oz) Type/Floating(Fixed Weight) Hook/#12 Ring/Hook Eye#1

NEW COLOR RELEASE - JULY 2018

Micro popper for the topwater game



TETRA WORKS BIVI

Length/40mm(1-5/8") Weight/3.8g(1/8oz) Type/Sinking(Fixed Weight) Hook/#14 Ring/Line Eye#1-Hook Eye#1

A bona-fide micro vibration lure



TETRA WORKS TOTOSHAD

Length/48mm(1-7/8") Weight/4.5g(1/6oz) Type/Sinking(Fixed Weight) Hook/#12 Ring/Line Eye#1-Hook Eye#1 Range/0.8~1.5m(2~5ft)

NEW COLORS - AVAILABLE NOW

Micro shad guaranteeing reliable range tracing

TOTOSHAD/YURAMEKI



TETRA WORKS YURAMEKI

Length/48mm(1-7/8") Weight/6.3g(1/4oz) Type/Sinking(Fixed Weight) Hook/#12 Ring/Line Eye#1-Hook Eye#1 Range/0.2~0.6m(1~2ft)

NEW COLORS - AVAILABLE NOW

A sinking pencil with superior carrying distance

SPEARHEAD

The Ryuki Brand

Spearhead Ryuki was born
to lead the global trout scene.
It was not simply about
creating a baiting lure.
It was never about putting the
design above the performance.
It was about creating a new standard.
A lure which does not allow
for any followers.
A lure to which there is no other.
Not now and not in the future.



SPEARHEAD RYUKI



SPEARHEAD RYUKI

Ryuki series keeps on expanding and now covers three types - sinking, floating, and medium diving minnow - a trio that covers any condition. It is absolutely imperative to have these models in your lure box to tackle the complex current in the head waters and small streams near the big boulders, counter currents, and in the main flow.

SPEARHEAD RYUKI 45S / 50S / 60S / 70S

[45S] ■Length/45mm(1-3/4") ■Weight/4g(1/8oz) ■Type/Sinking(Fixed Weight)
■Hook/#12 ■Ring/Line Eye#1-Hook Eye#1 ■Range/0.4~0.6m(1~2ft)

[50S] ■Length/50mm(2") ■Weight/4.5g(1/8oz) ■Type/Sinking(Fixed Weight)
■Hook/#12 ■Ring/Line Eye#1-Hook Eye#1 ■Range/0.4~0.8m(1~3ft)

[60S] ■Length/60mm(2-1/3") ■Weight/6.5g(1/4oz) ■Type/Sinking(Fixed Weight)
■Hook/#10 ■Ring/Line Eye#1-Hook Eye#1 ■Range/0.4~0.8m(1~3ft)

[70S] ■Length/70mm(2-3/4") ■Weight/9g(1/3oz) ■Type/Sinking(Fixed Weight)
■Hook/#10 ■Ring/Line Eye#2-Hook Eye#2 ■Range/0.6~1.0m(2~3ft)

NEW COLORS • AVAILABLE NOW

Realization of great castability and superb action response



SPEARHEAD RYUKI 80S

■Length/80mm(3-1/8") ■Weight/12g(3/8oz) ■Type/Sinking(Fixed Weight) ■Hook/#8 ■Ring/Line Eye#2-Hook Eye#2 ■Range/0.7~1.2m(2~4ft)

NEW COLORS • AVAILABLE NOW

Large trout's favourite snack



SPEARHEAD RYUKI 95S / 110S **NEW PRODUCT**

[95S] ■Length/95mm(3-5/8") ■Weight/15g(1/2oz) ■Type/Sinking(Fixed Weight)
■Hook/#6 ■Ring/Line Eye#3-Hook Eye#3 ■Range/0.8~1.2m(2~4ft)

[110S] ■Length/110mm(4-3/8") ■Weight/21g(3/4oz) ■Type/Sinking(Fixed Weight)
■Hook/#4 ■Ring/Line Eye#3-Hook Eye#3 ■Range/0.8~1.2m(2~4ft)

NEW PRODUCT & NEW COLOR RELEASE • AVAILABLE NOW

New king of the current



SPEARHEAD RYUKI 50F / 70F

[50F] ■Length/50mm(2"n) ■Weight/2.8g(1/10oz) ■Type/Floating(Fixed Weight)
 ■Hook/#12 ■Ring/Line Eye#1-Hook Eye#1 ■Range/0.3~0.6m(1~2ft)

[70F] ■Length/70mm(2-3/4"n) ■Weight/5.3g(1/5oz) ■Type/Floating(Magnet Assisted Weight)
 ■Hook/#10 ■Ring/Line Eye#2-Hook Eye#2 ■Range/0.5~0.7m(1~2ft)

NEW COLOR RELEASE • APRIL 2018
Floater for a natural approach in tough conditions



SPEARHEAD RYUKI 50MDF / 70MDF

[50MDF] ■Length/50mm(2"n) ■Weight/3.4g(1/8oz) ■Type/Floating(Magnet Assisted Weight)
 ■Hook/#12 ■Ring/Line Eye#1-Hook Eye#1 ■Range/0.6~1.0m(2~3ft)

[70MDF] ■Length/70mm(2-3/4"n) ■Weight/5.4g(1/5oz) ■Type/Floating(Magnet Assisted Weight)
 ■Hook/#10 ■Ring/Line Eye#2-Hook Eye#2 ■Range/0.8~1.2m(3~4ft)

Trace the range smoothly with the medium deep diver



DUO International
ALURE ADVANCED FISHING EQUIPMENT
 COLLABORATION COLORS

Limited Series

SPEARHEAD RYUKI 45S / 50S / 70S

[45S] ■Length/45mm(1-3/4"n) ■Weight/4g(1/8oz) ■Type/Sinking(Fixed Weight)
 ■Hook/#12 ■Ring/Line Eye#1-Hook Eye#1 ■Range/0.4~0.6m(1~2ft)

[50S] ■Length/50mm(2"n) ■Weight/4.5g(1/8oz) ■Type/Sinking(Fixed Weight)
 ■Hook/#12 ■Ring/Line Eye#1-Hook Eye#1 ■Range/0.4~0.6m(1~2ft)

[70S] ■Length/70mm(2-3/4"n) ■Weight/9g(1/3oz) ■Type/Sinking(Fixed Weight)
 ■Hook/#10 ■Ring/Line Eye#2-Hook Eye#2 ■Range/0.6~1.0m(2~3ft)

COLOR RANGE RELEASE • MARCH 2018

Best of both worlds united under Ryuki banner

Spearhead Ryuki had been the premier trout lure series for the last half a decade developing a lethal reputation for its pure effectivity to a point the biggest names in trout fishing rank it amongs their favourite. That also includes Masaki Masakage of M Alure, who based on his years of experience handpicked five colors which will be produced in three sizes 45S, 50S and 70S.



DUO International
D3 Custom Lure's
 COLLABORATION



SPEARHEAD RYUKI 45S / 50S / 60S / 70S SINGLE LIMITED

[45S] ■Length/45mm(1-3/4"n) ■Weight/4g(1/8oz) ■Type/Sinking(Fixed Weight)
 ■Hook/#10 ■Ring/Line Eye#1-Hook Eye#1 ■Range/0.4~0.6m(1~2ft)

[50S] ■Length/50mm(2"n) ■Weight/4.5g(1/8oz) ■Type/Sinking(Fixed Weight)
 ■Hook/#10 ■Ring/Line Eye#1-Hook Eye#1 ■Range/0.4~0.8m(1~3ft)

[60S] ■Length/60mm(2-1/3"n) ■Weight/6.5g(1/4oz) ■Type/Sinking(Fixed Weight)
 ■Hook/#8 ■Ring/Line Eye#1-Hook Eye#1 ■Range/0.4~0.8m(1~3ft)

[70S] ■Length/70mm(2-3/4"n) ■Weight/9g(1/3oz) ■Type/Sinking(Fixed Weight)
 ■Hook/#6 ■Ring/Line Eye#2-Hook Eye#2 ■Range/0.6~1.0m(2~3ft)

Trout legend with new gear!

The "Ryuki Single Limited" series will be released in a range of five colors hand-picked by Fukushi-san, designer behind D3 brand, a legend in Hokkaido. DUO has already worked together with D3 on Gambrel spoon and this time besides the color range, we have together developed "D3 Balancer" single hook. The concept of the hook was to provide the a balance similar to that of a treble hook, so we put an extra focus on the weight. The single hooks will also be sold separately in three sizes - #10, #8 and #6.



SPEARHEAD RYUKI 45S / 60S / 80S / 95S WT / 110S SW LIMITED

[45S] ■Length/45mm(1-3/4"n) ■Weight/4g(1/8oz) ■Type/Sinking(Fixed Weight)
 ■Hook/#12 ■Ring/Line Eye#1-Hook Eye#1 ■Range/0.4~0.6m(1~2ft)

[60S] ■Length/60mm(2-1/3"n) ■Weight/6.5g(1/4oz) ■Type/Sinking(Fixed Weight)
 ■Hook/#10 ■Ring/Line Eye#1-Hook Eye#1 ■Range/0.4~0.8m(1~3ft)

[80S] ■Length/80mm(3-1/8"n) ■Weight/12g(3/8oz) ■Type/Sinking(Fixed Weight)
 ■Hook/#8 ■Ring/Line Eye#2-Hook Eye#2 ■Range/0.7~1.2m(2~4ft)

[95S] ■Length/95mm(3-5/8"n) ■Weight/17g(5/8oz) ■Type/Sinking(Fixed Weight)
 ■Hook/#6 ■Ring/Line Eye#3-Hook Eye#3 ■Range/1.0~1.4m(3~4ft)

[110S] ■Length/110mm(4-3/8"n) ■Weight/21g(3/4oz) ■Type/Sinking(Fixed Weight)
 ■Hook/#4 ■Ring/Line Eye#3-Hook Eye#3 ■Range/0.8~1.2m(2~4ft)

NEW COLOR RELEASE • AVAILABLE NOW

Ryuki's saltwater takeover continues



Nature Design

DragMetal Cast

- 15g 43.5mm
- 20g 49mm
- 30g 56mm
- 40g 68mm

DragMetal Cast Slow

- 15g 43.5mm
- 20g 49mm
- 30g 56mm
- 40g 68mm

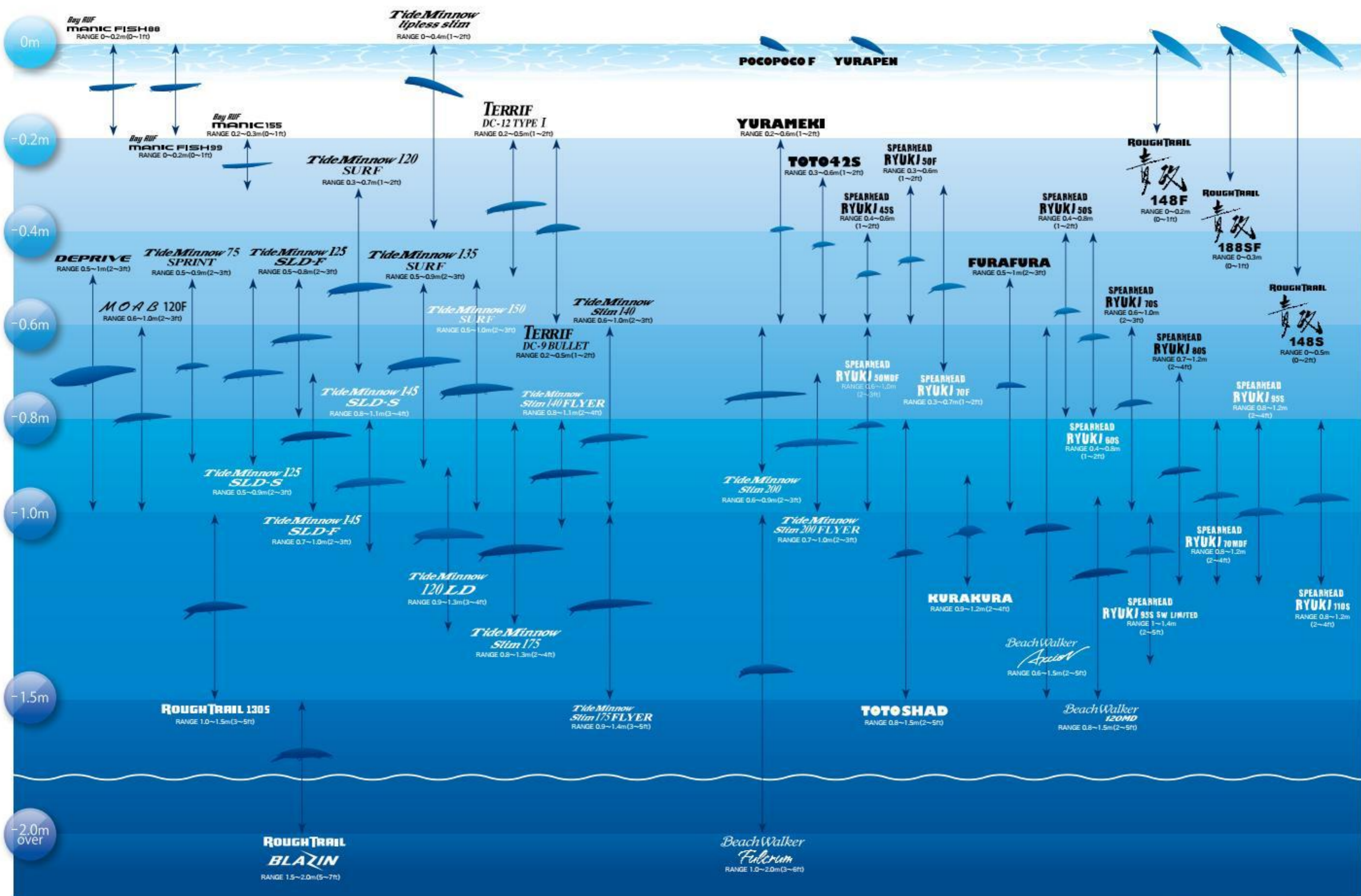
DragMetal Cast Slim

- 20g 65mm
- 30g 73mm
- 40g 82mm
- 60g 94mm

TETRA WORKS TETRAJIG

- 3g 32mm
- 5g 37mm
- 7g 41mm
- 10g 46mm

- SPIN 28mm
- FURAFURA 48mm
- TOTOSHAD 48mm
- YURAPEN 48mm
- KURAKURA 30mm
- TOTO48HS 48mm
- PERAKKO 48mm
- IKAKKO 38mm
- TOTO42S 42mm
- YURAMEKI 48mm
- BIVI 48mm
- POCOPOCO F 40mm
- SPEARHEAD RYUKI 45S 45mm
- SPEARHEAD RYUKI 50MDF 50mm
- SPEARHEAD RYUKI 50S 50mm
- SPEARHEAD RYUKI 70MDF 70mm
- SPEARHEAD RYUKI 60S 60mm
- SPEARHEAD RYUKI 50F 50mm
- SPEARHEAD RYUKI 70S 70mm
- SPEARHEAD RYUKI 70F 70mm
- SPEARHEAD RYUKI 80S 80mm
- SPEARHEAD RYUKI 95S 95mm
- SPEARHEAD RYUKI 110S 110mm



LURE DEPTH CHART

The depth of the lure might vary depending on conditions. Please use the depth chart as a general guide.

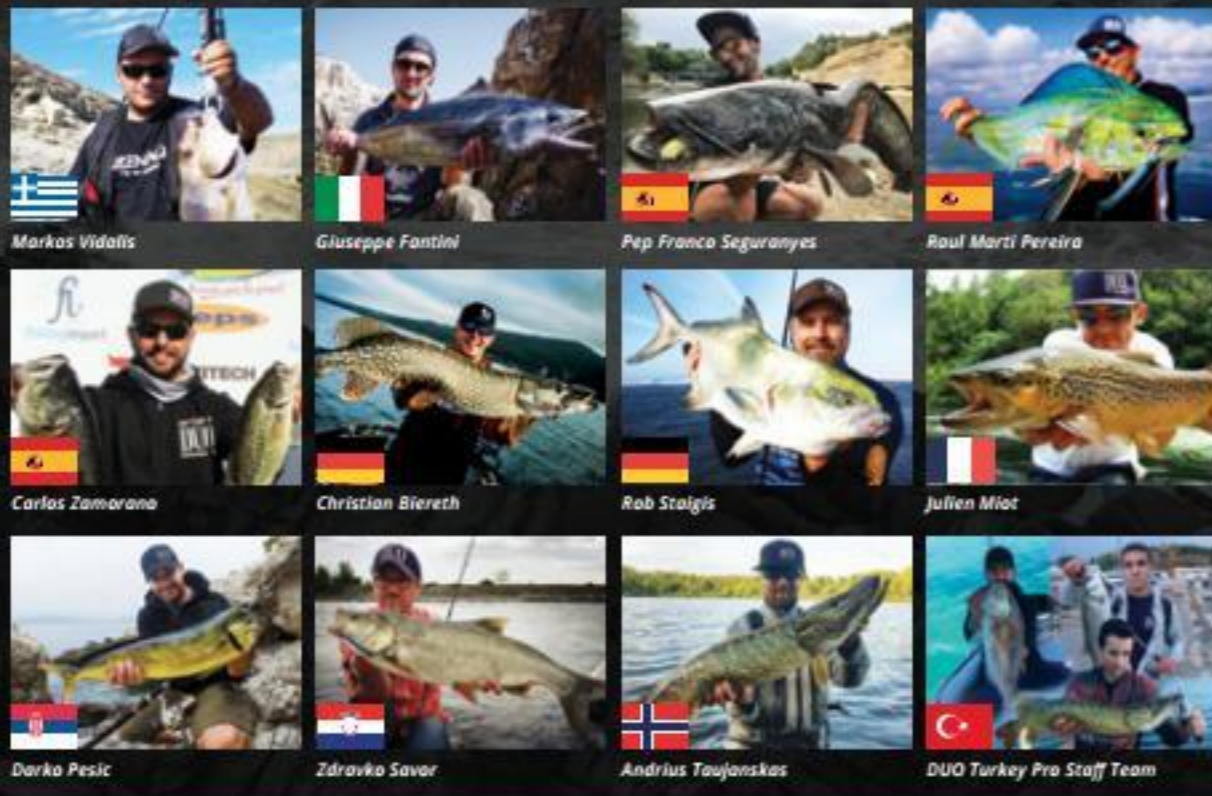
FANG OPS



USA



EUROPE



ASIA & OCEANIA



LATIN AMERICA



PRO STAFF JAPAN



MLine



HAJIME MURATA
村田 基

G-Fix



TAKASHI NISHIJIMA
西島 高志

Grade A



JUNICHI AIBA
相羽 純一
FUMIKAZU NAGATO
長戸 郁和

REALIS



KEI TAKEHISA
武久 圭
HITOSHI FURUKAWA
古川 仁志
YUSUKE HASHIMOTO
橋本 裕介

SALTWATER



TROUT



MANABU ISHIKAWA
石川 学
TOMOYUKI FUKUSHI
福士 知之

DUO ORIGINAL ACCESSORIES

HEADWEAR



NEW COLOR DUO Visor

NEW DUO Visor
Color: Grey Camo/Green Camo

DUO Flexfit Cap
Color: Black-Black/Navy-White/Black-White/Royal Blue/Navy-White-Navy



NEW DUO Snapback
Color: Camouflage/Black/Heather Grey-Black

Black & Gold Embroidery Detail



LIMITED DUO "Only One" Snapback Limited
Color: Camouflage-Black



NEW Realis Trucker
Color: Red/Black



NEW Realis Snapback
Color: Red/Black



DUO Trucker
Color: Black/Grey Camo/Green Camo



NEW DUO Beanie
Color: Heather Grey/Dark Grey/Black



NEW DUO Wide Brim Hat
Color: Khaki

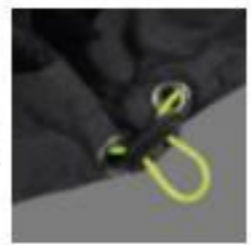
APPAREL



NEW DUO Windbreaker Jacket
Size: XS-S-M-L-XL US Sizes Color: Grey Camo/Grey-Dark Grey



Two Frontside Pockets



Adjustable Hood and Bottom Rim

DUO x STORMR

DUO X STORMR Collaboration UV protection shirt with the Fang Ops "Beast" motif



NEW DUO X Stormr Beast Performance Long T
Size: S-M-L-XL-XXL US Sizes Color: Blue-Grey/White-Grey



NEW DUO "Only One" Long T
Size: S-M-L-XL-XXL US Sizes Color: Navy-Grey/Ash-Dark Grey

NEW DUO "Only One" T-Shirt
Size: S-M-L-XL-XXL US Sizes Color: Ash/Charcoal

"Only One" series with the names of DUO brands in the shape of a fish.



NEW Fang Ops Beast Dry T
Size: S-M-L-XL-XXL Color: Navy/Mixed Red

DUO Logo Hoodie
Size: S-M-L-XL-XXL-XXXL Color: Black



NEW Going Beast Mode Dry T
Size: S-M-L-XL-XXL Color: White/Black

NEW DUO "There is Only One" Dry T
Size: S-M-L-XL-XXL Color: Navy/White/Black

ACCESSORIES



NEW DUO UV Headwear
■Color: Black Camo/White Camo/Blue Camo

NEW DUO UV Arm Guard
■Color: Black Camo/White Camo/Blue Camo



DUO Lure Case
■Size: 205×145×40mm
■Color: Black/White

DUO Reversible Lure Case
■Size: 85·100·145 **NEW SIZE**·165
■Color: Black

NEW DUO Reversible Lure Case DD86
■Size: 140×104×32mm
■Color: Green·Light Green



Cross-Lock Snap
■Size: #1·#2·#3
■Quantity: 10pcs

Split Ring
■Size/Quantity: #1/38pcs·1.5/20pcs·#2/34pcs·#3/24pcs·#4/18pcs·#5/12pcs



Cover Ring Rod Belt
■Size: M-L

Smart Rod Carrier
■Shoulder Strap Length:
750-1300mm

Rod Belt
■Size: 40×390mm
and 50×450mm

Spool Band
■Size: S-M



NEW Fang Ops "Beast" Cut-Out Sticker
■Size: 100×100mm
■Color: Red



"There is Only One" Sticker
■Size: 148×112mm
■Color: Black/White



DUO Logo Sticker
■Size: 84×84mm ■Color: White

DUO Logo Cut-Out Sticker
■Logo Size: 165×182mm ■Color: White



REALIS Logo Cut-Out Sticker
■Logo Size: 42×140mm
■Color: White/Red



martin@duo-inc.co.jp
www.duo-international.com
Kamikasugi 701, 421-0201, Yaizu, Shizuoka, 425-0066, JAPAN

www.facebook.com/DUOJPN
www.instagram.com/DUOJPN

©2018 DUO CO., LTD.
All Rights Reserved.

WARNING

■Please do not use for purposes other than fishing. ■Please keep out of the reach of children ■The hooks are very dangerous. Please use caution.
■When casting a lure, please be sure to check the safety of the surroundings. ■When the lure and the package are no longer needed, please dispose responsibly.

SALES AREA



Company Name	Sales Area	Website
Europe		
VUK.BG	Bulgaria	www.shop.fishing-tackle.bg
Stream Tackle	Bosnia, Hungary	www.streamtackle.com
Skorpion DNC	Croatia	www.skorpion-dnc.hr
ZICO CZ	Czech Republic, Slovakia	www.zico.cz
Koder	Denmark	www.koder.dk
Ultimate Fishing	France, Spain	www.ultimate-fishing.fr
SWAT Fishing	Germany, Austria, Holland, Belgium, Luxembourg	www.swat-fishing.com
Anglermania	Greece, Cyprus	www.anglermania.com
T2 Distribution	Italy	www.t2distribution.wordpress.com
Angler's Zone	Lithuania, Latvia, Estonia, Poland	www.anglerszone.eu
Gomak DOOEL	Macedonia (FYROM)	***
Angler's Centre	Malta	www.anglercentre.com
Fish+	Moldova	***
Centar Com	Montenegro	***
ProFisker	Norway	www.profisker.no
Modern Angler	Portugal	www.modern-angler.com
Big Fish	Romania	www.bigfish.ro
Moscanelia	Russia, Belarus	www.moscanelia.ru
Maelstrom Fishing	Serbia	www.maelstromfishing.com
MIGN	Slovenia	***
Fishcom	Switzerland	www.fishcom.ch
Nero Marin	Turkey, Kazakhstan, Turkmenistan, Uzbekistan	www.neromarin.com
IBIS	Ukraine	www.fishing.ibis.net.ua
Lure Heaven	UK, Ireland	www.lureheaven.co.uk
Africa		
DAP Fishing	Algeria	www.dap-fishing.com
Fish 'n' Egypt	Egypt	www.fishnegypt.com
Adrian Francis Group	Mauritius	***
Fastfit	Reunion Island	***
Solly's Anglers Corner	South Africa	www.sollys-anglers.co.za
North America		
DUO International	USA, Canada	www.duo-international.com
Latin America		
Superfish	Brazil	www.superfishing.com.br
Full Pesca	Costa Rica	***
Marinsa	El Salvador	www.marinsa.com.sv
Yucatex Tackle	Mexico	***
Todopesca	Peru, Chile, Argentina, Ecuador	www.todopescashop.com
Asia & Oceania		
Daiwa Australia	Australia, New Zealand	www.duo-australia.com.au
Captain Fred Fishing	Brunei	www.fredfishing.com
Eurl Wong Hen	French Polynesia	***
Pelagic Tribe	India	www.pelagictribe.com
TTG Fishing	Indonesia	***
Fish 'n' Fun	Israel	www.fish-n-fun.co.il
Free Dive Zone	Lebanon	***
D Blue	Maldives	***
Nomad Fishing Club	Mongolia	***
Malama Enterprises	Papua New Guinea	***
Ifish Pro Shop	Philippines	***
Lunker	Republic of Korea	www.lunkermail.com
Tackle Source	Singapore, Malaysia	***
Smart & Choice	Taiwan, China, Vietnam	www.duo-lure.com.tw
Akan Tackle	Thailand	www.akan-tackle.com
Titanic International Marine	United Arab Emirates, Saudi Arabia, Bahrain, Kuwait, Oman, Qatar	***

FOUNDATION FOR THE FUTURE

Our Commitment to Nippon Quality

For decades the name DUO International has been synonymous with Japan's premier lure market. And to this day, DUO continues to embrace the JDM (Japanese Domestic Market) platform with honor. A deep desire for DUO's advanced lure innovation has radiated throughout the international community. Countries across the globe have garnered an insatiable appetite for some of the most sophisticated lure development known to angling. Our concepts and outcomes in lure advancement resonated with the experienced angling-ship across ocean, river and lake. A commitment to our global strategy created in 2011.

As we embark on 2018, DUO is prepared to reach far beyond its boundaries. Creating the largest lure development factory in Japan exemplifies DUO direction. It's a complex large enough and advanced enough to blend raw craftsmanship, with innovative technology and refined function.

This new state of the art super-plex will be able to facilitate the growing needs of the worldwide market. Staying in the JDM build model will further separate DUO from its competitors who have conceded to look abroad to replicate or invest in marginal build-processes.

DUO's new facility will not only be the largest lure development factory in Japan, it will lend the latest in technology regarding 3D CAD design as well the provide efficient logistics to accommodate the most discriminate customer.

DUO is a continuation of a story about passion, pride, innovation, evolution and the relentless drive to perfection, a road far less traveled by others. It's the story of a resolute commitment to Nippon Quality.

34°49'18.0"N 138°16'45.5"E
YAIJU, SHIZUOKA PREFECTURE, JAPAN



NEW RELEASE 2018

THE RANGE OF EXCITING NEW
LURES FOR SEASON 2018 WILL COVER
YOU FROM THE SURFACE ALL THE
WAY TO THE BOTTOM AREA



P.14

REALIS FANGPOP105 / 120

Two sizes of heavy duty popper are ready to tackle the beasts on the surface.



P.81

SPEARHEAD RYUKI 110S

The final size in the series preserving the highly appealing action.

P.61

DEPRIVE

DUO X Coreman collaboration item, Deprive, bringing the rush of swimbait fishing to saltwater.



P.60

Bay RUF MANIC 155 / FISH 88 / 99

State of art action "Manic Move" remains the only of its kind.



P.76

TETRA WORKS TOTO 48HS FURAFURA YURAPEN SPIN

The micro army keeps on growing - choose your weapon!



P.66

ROUGH TRAIL MAX BLAZIN BLAZIN 110

Even deeper tracing possible with two new heavier additions to Blazin series.



P.75

TETRA WORKS TETRAJIG

A combination of fast sinking and pausing will mesmerize your target.



P.72

DragMetal

The long awaited DUO's answer to jigging game is here!



P.24

REALIS PENCIL130

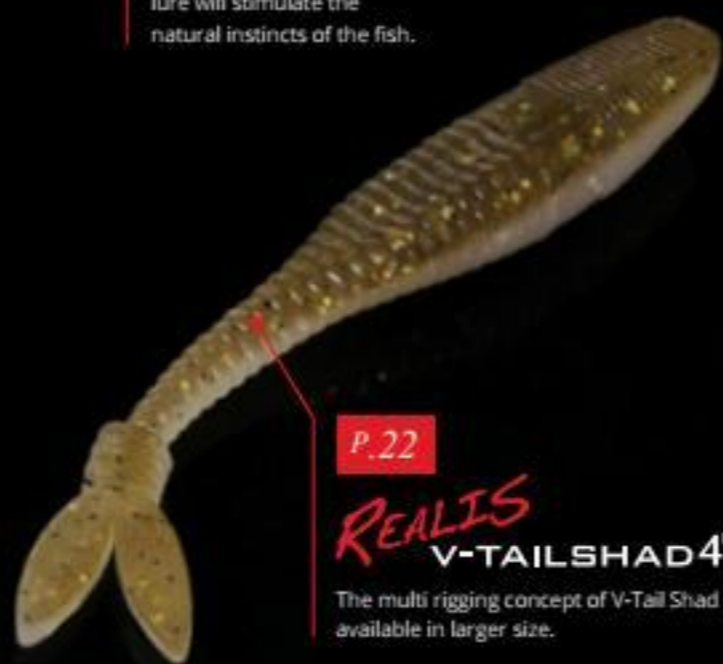
A large topwater dog-walker built for abuse and complete warfare.



P.28

REALIS SPIN

Conquer the field! A tail-spin type lure will stimulate the natural instincts of the fish.



P.22

REALIS V-TAILSHAD4"

The multi rigging concept of V-Tail Shad available in larger size.

P.26

REALIS DEKASHINMUSHI / KOSHINMUSHI

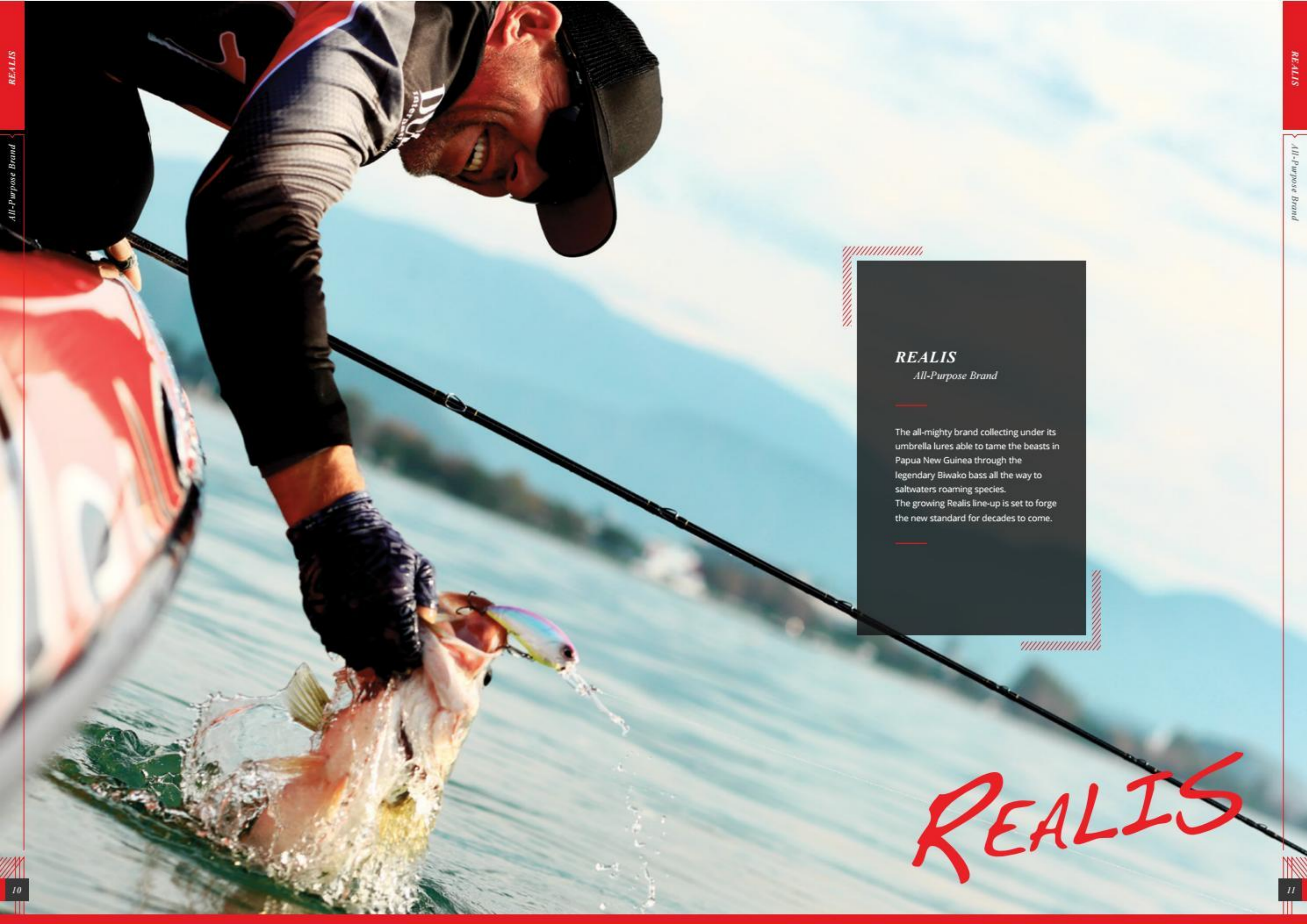
A chorus of cicadas in all sizes under the Shinmushi banner.

P.57-58

BeachWalker Afraid / Revolt

The bladed duo of Beach Walkers will allure targets from a distance.





REALIS

All-Purpose Brand

The all-mighty brand collecting under its umbrella lures able to tame the beasts in Papua New Guinea through the legendary Biwako bass all the way to saltwaters roaming species. The growing Realis line-up is set to forge the new standard for decades to come.

REALIS



FANG OPS

GOING BEAST MODE

Utilizing DUO's highly advanced molding technology, the lure designs were headed by DUO CEO and Chief designer Masahiro Adachi in close collaboration with One Bite One Fishe's Kazuhiro Uyama, a predator fishing icon, who provided invaluable insight based on his vast global experience and know-how.

Contrary to the notion of JDM (Japanese Domestic Model) being associated with finesse usage, Fang Ops lures were created specifically for daring anglers around the world, with a toughness and durability that could match any monster anytime, anywhere.

Keeping true to DUO's motto "There is Only One", the standard-setting Fang Ops lures will be a must-have for the predator angler going beast mode.

PRODUCED BY
MASAHIRO ADACHI & KAZUHIRO UYAMA

Discover more at



www.fangops.com



www.facebook.com/FangOps



REALIS FANGPOP105/120 NEW PRODUCT

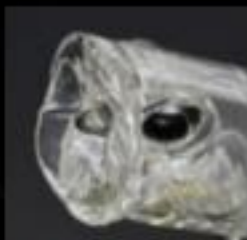
[105] ■ Length/105mm(4-1/8" in) ■ Weight/24.5g(7/8oz)
 ■ Type/Floating(Fixed Weight) ■ Hook/#2X ■ Ring/#4.5

[120] ■ Length/120mm(4-3/4" in) ■ Weight/30g(1-1/8oz)
 ■ Type/Floating(Fixed Weight) ■ Hook/#1X ■ Ring/#5.5



**Versatile and Tough.
 Bring the Beasts up to the Surface!**

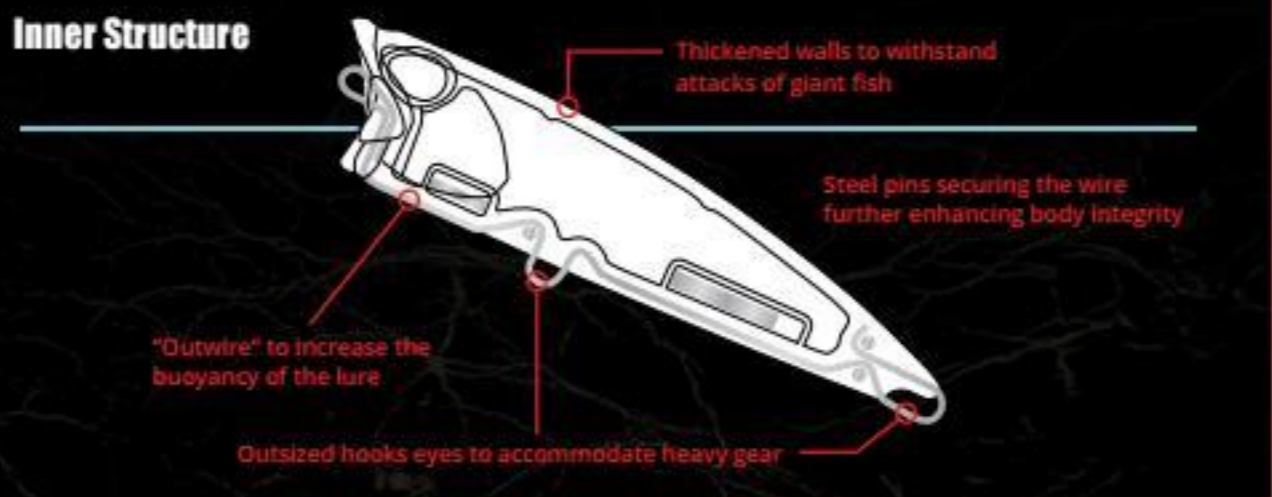
After conquering shallow and deep waters with Fangbaits, Fang Ops is ready to rule the surface too. Introducing FangPop, the new topwater master. Even with light twitching, FangPop splashes the water well accompanied by a sweet pop sound to attract the predators to reach out. Versatile enough to be used for GT-style popping, straight fast retrieve as well as staging a crisp walk the dog, FangPop proves its all-rounder status. Being fully wired-through at that, it makes it the only one of its kind. Get ready to call the beasts to meet you at the surface.



Refined Cup Design

The multi-angled cup aids in helping the lure walk the dog and also increases the amount of water pushed by the lure when popped.

Inner Structure



FANG·OPS
 GOING BEAST MODE

FANGPOP105/120

FANGPOP 105 • AVAILABLE NOW FANGPOP 120 • JUNE 2018 NEW COLORS • JUNE 2018



FANGPOP105/120 SW LIMITED

FANGPOP 105 • AVAILABLE NOW FANGPOP 120 • JUNE 2018 NEW COLORS • JUNE 2018



REALIS FANGPOP

REALIS FANGPOP